

EAN: 8016361939004

MODEL HL 1071D1/1-AUS



FREESTANDING 7KG WASHING MACHINE

PRODUCT INFORMATION

FINISH

- white

CAPACITY

- 7kg capacity
- Drum volume 58L

CONNECTIVITY

- “One-Touch” feature - can be used android phones using the Hoover Wizard app
- NFC technology (near field communication)

FEATURES

- Motor- AC
- Spin speed - 1000RPM
- Stainless steel drum
- Silitech tub

FUNCTIONS

- Programmes number 15+1
- Special programs - activeco 20°, whites, cotton, dark colours, delicates, drain + spin, hand wash & wool, baby hygiene 60°, mixed, one touch, rapid 30' 40°c, rapid 59' 40, rinses, sports wear, whites + pre
- Functions - extra-rinse, spin selection, start delay, start/pause, spin speed, start delay option, temperature selection

SAFETY

- Water protection system- foam control, anti overflow
- Door security

TECHNICAL

- Gross weight 71kg
- Net weight 69kg
- Current A 10
- Fuse rating (A) 10

**DYNAMIC NEXT****LOW NOISE****TOUCH CONTROL****START DELAY****ANDROID**

DISCLAIMER

Eurolinx PTY LTD, is continually seeking ways to improve the design specifications, aesthetics and production techniques of its products. As a result alterations to our products and designs take place continually. Whilst every effort is made to produce information and literature that is up to date, this brochure should not be regarded as an infallible guide to the current specifications, nor does it constitute an offer for the sale of any particular product. Product dimensions indicated in our literature is indicative only. Actual product only should be used to define dimension cut outs. Distributors, and retailers are not agents of Eurolinx and are not authorized to bind Eurolinx by any express or implied undertaking or representation.

FOLLOW US ON:

hoover_appliancesAU

www.hooverappliances.com.auPage 1/3
21122020

Australian National Telephone Number 1300 694 583
Office Hours: Monday - Friday 8:30am-5pm
Showroom Hours: Tuesday - Friday 9am-5pm & Saturday 10am-4pm
Closed Sunday & Monday

NSW & ACT (Head Office)
48-50 Moore Street
Leichhardt
F 02 8569 4699

QLD
1/42 Cavendish Road
Coorparoo
F 07 3397 0850

WA & NT
Unit 10/55 Howe Street
Osborne Park
F 08 9201 9188



AVAILABLE ACCESSORIES

MODEL 35602039

STACKING KIT WITH SLIDING SHELF

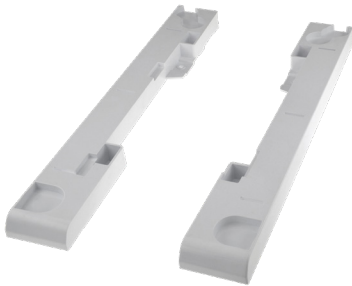


The universal stacking kit allows for safe and perfectly stable placement of your dryer above the washing machine, saving useful space in the home.

The 35602039 model features a practical sliding shelf, with safe stop and anti-tipping system that can hold up to 12Kg to help make loading and unloading easier. The shelf is also handy for folding laundry as you empty the dryer.

MODEL 35601864

STACKING KIT



Quick and easy to install, this kit requires no tools to assemble while its included securing strip and wall mount ensures a secure fitting even during spin cycles, leaving you in total security and peace of mind.

It fits most washing machines and tumble dryers easily (the kit is suitable to all standard-size appliances, from 47cm to 62cm of depth, even with rounded front).

PRODUCT INFORMATION

Features

- Quick and easy to install
- Suitable for all standard-size appliances, even with rounded front
- Safe, durable and stable even during spin cycles
- Practical sliding shelf, supporting up to 12Kg (35602039- stacking kit with sliding shelf)



DISCLAIMER

Eurolinx PTY LTD, is continually seeking ways to improve the design specifications, aesthetics and production techniques of its products. As a result alterations to our products and designs take place continually. Whilst every effort is made to produce information and literature that is up to date, this brochure should not be regarded as an infallible guide to the current specifications, nor does it constitute an offer for the sale of any particular product. Product dimensions indicated in our literature is indicative only. Actual product only should be used to define dimension cut outs. Distributors, and retailers are not agents of Eurolinx and are not authorized to bind Eurolinx by any express or implied undertaking or representation.

EAN: 8016361939004

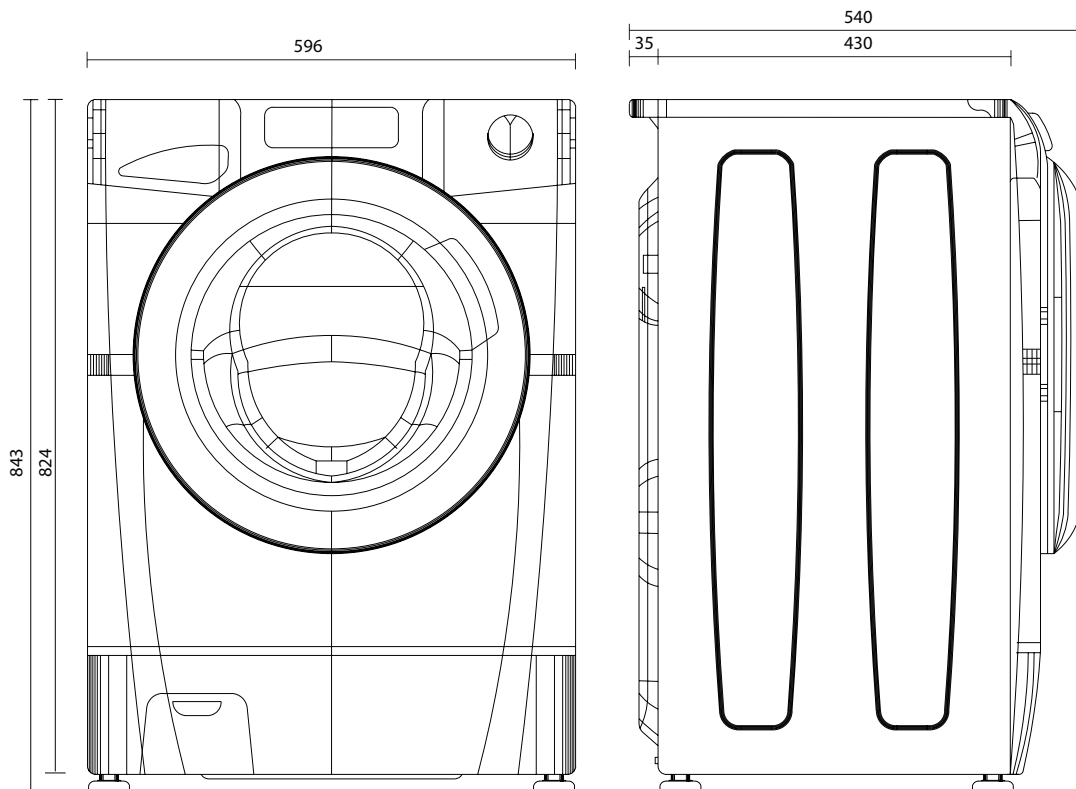
MODEL HL 1071D1/1-AUS



FREESTANDING 7KG WASHING MACHINE

TECHNICAL DIAGRAM

HL 1071D11-AUS



Model 31007835 Freestanding 7kg washing machine

Max absorbed power (kW) 1500

Voltage V 220-240

Length inlet hose 150cm, length drain hose 200cm, length electrical supply cord 160cm

DISCLAIMER

Eurolinx PTY LTD, is continually seeking ways to improve the design specifications, aesthetics and production techniques of its products. As a result alterations to our products and designs take place continually. Whilst every effort is made to produce information and literature that is up to date, this brochure should not be regarded as an infallible guide to the current specifications, nor does it constitute an offer for the sale of any particular product. Product dimensions indicated in our literature is indicative only. Actual product only should be used to define dimension cut outs. Distributors, and retailers are not agents of Eurolinx and are not authorized to bind Eurolinx by any express or implied undertaking or representation.

FOLLOW US ON:  [hover_appliancesAU](https://www.instagram.com/hover_appliancesAU)

www.hooverappliances.com.au

Page 3/3
21122020

Australian National Telephone Number 1300 694 583
Office Hours: Monday - Friday 8:30am-5pm
Showroom Hours: Tuesday - Friday 9am-5pm & Saturday 10am-4pm
Closed Sunday & Monday

NSW & ACT (Head Office)
48-50 Moore Street
Leichhardt
F 02 8569 4699

QLD
1/42 Cavendish Road
Coorparoo
F 07 3397 0850

WA & NT
Unit 10/55 Howe Street
Osborne Park
F 08 9201 9188