

the Big Squeeze™

Instruction Book - BJS700



Breville



Contents

2	Breville Recommends Safety First
6	Components
7	Assembly
10	Operation
13	Care & Cleaning
16	Troubleshooting

BREVILLE RECOMMENDS SAFETY FIRST

At Breville we are very safety conscious. We design and manufacture consumer products with the safety of you, our valued customer, foremost in mind. In addition we ask that you exercise a degree of care when using any electrical appliance and adhere to the following precautions.

IMPORTANT SAFEGUARDS

READ ALL INSTRUCTIONS BEFORE USE AND SAVE FOR FUTURE REFERENCE

- Carefully read all instructions before operating the appliance for the first time and save for future reference.
- Remove and safely discard any packaging materials and promotional labels before using the appliance for the first time.
- To eliminate a choking hazard for young children, remove and safely discard the protective cover fitted to the power plug of this appliance.
- To protect against electrical shock, do not immerse the power cord, power plug or motor base in water or any other liquid.

- Always use the appliance on a dry, level surface.
- Do not use the appliance on a sink drain board.
- Do not place the appliance near the edge of a bench or table during operation. Vibration during operation may cause the appliance to move.
- Do not place the appliance on or near a hot gas or electric burner, or where it could touch any other source of heat.
- Unwind the power cord fully before use.
- Do not allow the power cord to hang over the edge of a table or counter, touch hot surfaces or become knotted.
- Always ensure the appliance is completely assembled before connecting to the power outlet and operating. The appliance will not turn on unless properly assembled. Follow the instructions provided in this book.
- Always avoid contact with moving parts.
- Strictly follow the care and cleaning instructions described in this book.
- This appliance is for household use only. Do not use the appliance for anything other than its intended purpose as described in this book. Do not use outdoors. Do not use in moving vehicles or boats.
- The use of attachments not sold or recommended by Breville may cause fire, electric shock or injury.
- Do not leave the appliance unattended when in use.

- Do not operate the juice extractor without the pulp and juice container in place.
- Do not use the juice extractor if the juicing screw is damaged.
- Do not push produce into the feed chute with your fingers. Always use the food pusher provided.
- Do not juice stone fruit unless seeds and/or stones have been removed.
- Always switch the juice extractor off after each use. Ensure the motor stops completely and unplug the power cord from the wall outlet before attempting to move the appliance, before cleaning, disassembling, assembling and when storing the appliance.
- Do not operate the machine longer than 20 seconds before inserting ingredients.

IMPORTANT SAFEGUARDS FOR ALL ELECTRICAL APPLIANCES

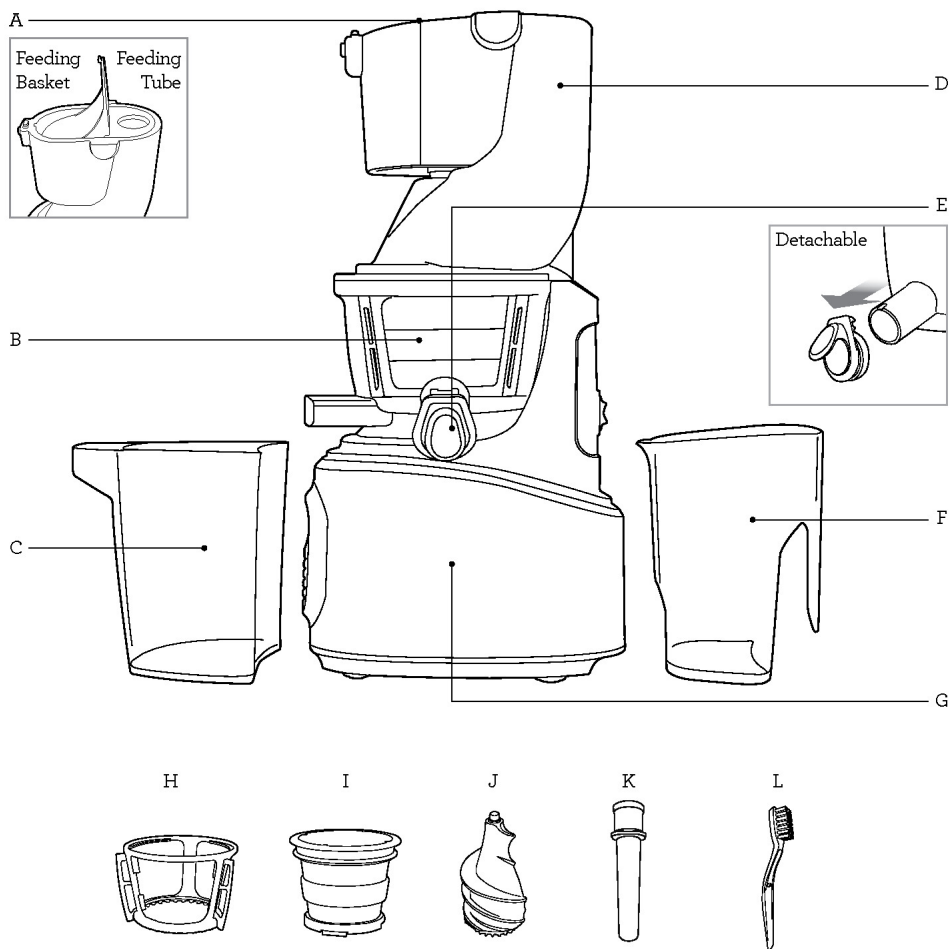
- Fully unwind the power cord before use.
- Do not let the power cord hang over the edge of a bench or table, touch hot surfaces or become knotted.
- To protect against electric shock do not immerse the power cord, power plug or appliance in water or any other liquid.
- The appliance is not intended for use by persons (including children) with reduced physical, sensory or mental capabilities, or lack of experience and knowledge, unless they have been given supervision or instruction concerning use of the appliance by a person responsible for their safety.

- Children should be supervised to ensure that they do not play with the appliance.
- It is recommended to regularly inspect the appliance. To avoid a hazard do not use the appliance if power cord, power plug or appliance becomes damaged in any way. Return the entire appliance to the nearest authorised Breville Service Centre for examination and/or repair.
- Any maintenance other than cleaning should be performed at an authorised Breville Service Centre.
- This appliance is for household use only.
- Do not use this appliance for anything other than its intended use. Do not use in moving vehicles or boats. Do not use outdoors. Misuse may cause injury.
- The installation of a residual current device (safety switch) is recommended to provide additional safety protection when using electrical appliances. It is advisable that a safety switch with a rated residual operating current not exceeding 30mA be installed in the electrical circuit supplying the appliance. See your electrician for professional advice.

**FOR HOUSEHOLD USE ONLY
SAVE THESE INSTRUCTIONS**



Components



A. Feeding Tube & Basket
For different sizes of produce.

B. Juicing Bowl

C. Pulp Cup

D. Drum Lid

E. Detachable Smart Cap

F. Juice Jug

G. Motor Body

H. Rotation Wiper

I. Strainer

J. Juicing Screw

K. Pusher

L. Cleaning Brush



Assembly

BEFORE FIRST USE

Before using your Juicer for the first time, remove any packaging material and promotional labels. Ensure the power is in the OFF position, the juicer is switched off at the power outlet and the power cord is unplugged.

Wash bowl and juicing tools in warm soapy water with a soft cloth. Rinse and dry thoroughly.

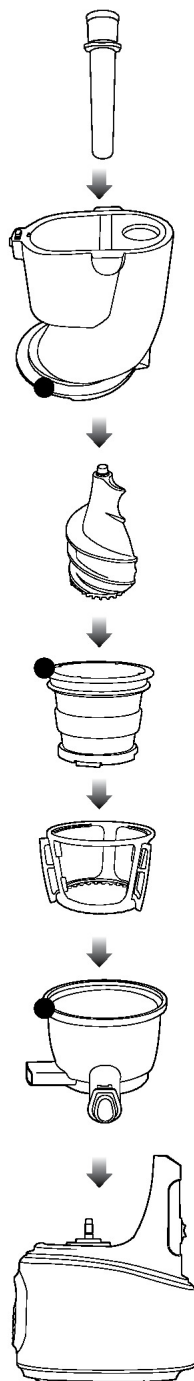
When first using your appliance, you may notice an odour coming from the motor. This is normal and will dissipate with use.

TOP SET ASSEMBLY

Align the red dots ● on each part and assemble in the order shown. Once assembled, turn the drum lid clockwise to close.

TOP-SET AND BODY ASSEMBLY

Place the drum lid on the juicing bowl. Align the down arrow ● on the drum lid with the ▲ OPEN mark on the body and turn to the ▲ CLOSE position.

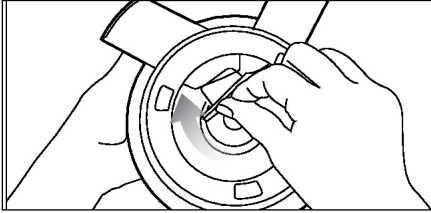




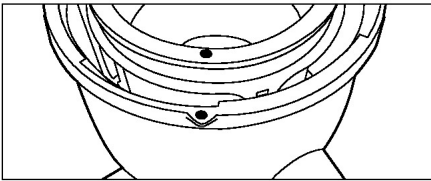
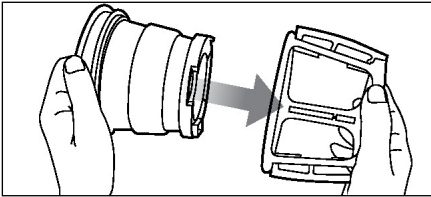
Assembly

ASSEMBLY

1. Firmly insert the compression silicone into the slot below the pulp spout. The Juicer may leak if not assembled properly.



2. Assemble the strainer into the rotation wiper then place this assembly in to the juicing bowl ensuring the red dot ● on the strainer is aligned with the red dot ● on the juicing bowl.

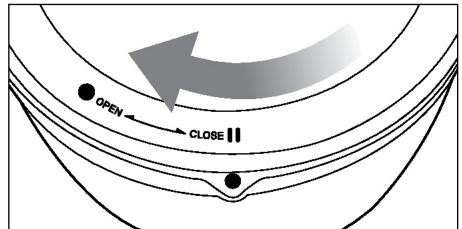
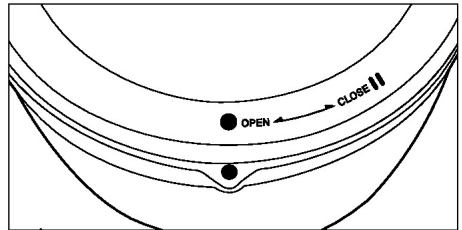


3. Place the juicing screw into the strainer. Turn and press down on it until it clicks into place.



The juicing screw needs to be locked in place in order to close the drum lid.

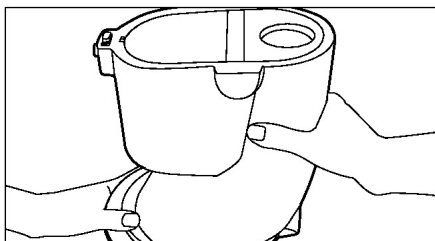
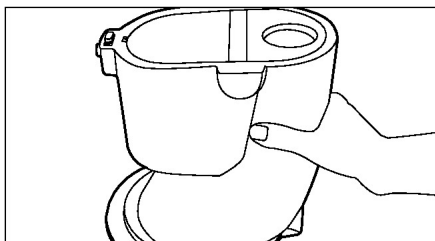
4. Place the drum lid on to the juicing bowl aligning the red dot ● on the drum lid with the red dot ● on the juicing bowl. Turn clockwise to close, aligning the red dot ● on the drum lid with the close mark ||



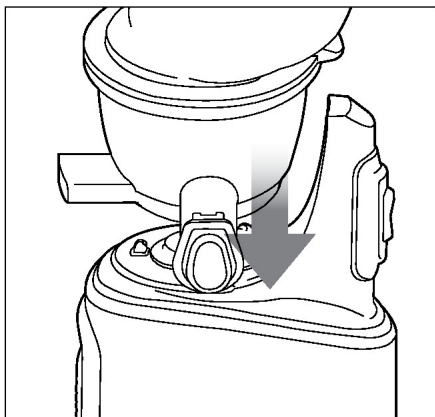


TIP

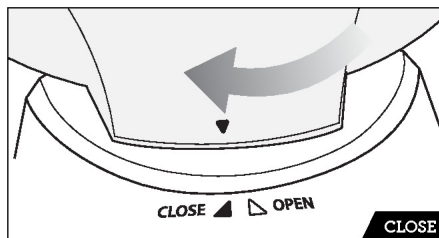
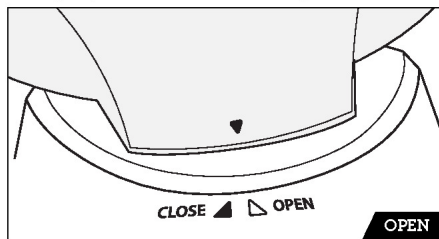
For easy assembly hold the drum lid by grabbing the feeding tube and turn clockwise as shown in the illustration.



5. Place the drum lid on the juicing bowl. Align the down arrow ● on the drum lid with the ▲ OPEN mark on the body and turn to the ▲ CLOSE position.



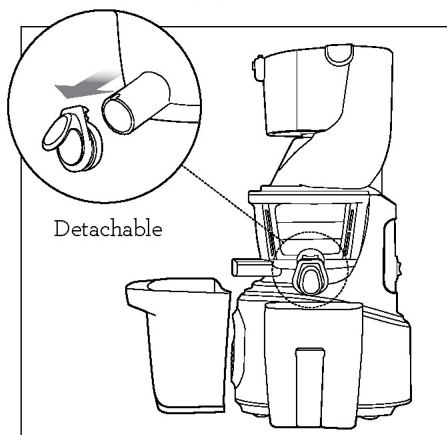
6. Open/Close mark on the top-set.



NOTE

The juicer will not operate if the down arrow ▼ on the drum lid is not completely aligned with the ▲ CLOSE mark on the body.

7. Place the pulp cup under the pulp spout and place the juice cup under the juice spout as shown in the illustration.





Operation

USING YOUR JUICER

1. After preparing the ingredients, plug the power cord into a wall outlet. Do not touch the power cord with wet hands. It may cause electrical shock, short-circuit, or fire.
2. Press the FORWARD button to operate.



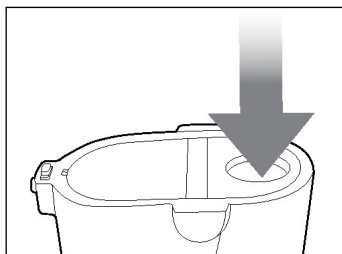
Forward: Pulls down and slowly masticates the ingredients.

Reverse: Pushes the ingredients back up to dislodge them. The REVERSE button only works while holding down the switch

3. Insert the prepared ingredients into the feeding tube, one piece at a time. If large quantity of ingredients are put into the feeding tube, it can cause the juicer to stop. Remove hard seeds or pits in fruits. When juicing frozen fruits, completely thaw before juicing.

HARD VEGETABLES & HIGH FIBRE FOODS (E.G. CARROTS, BEETS, & SPINACH)

Insert into the feeding tube.

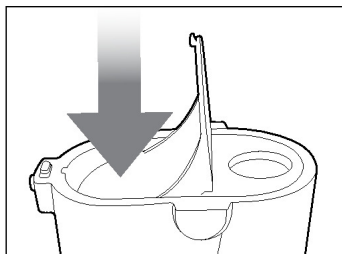


Tough and fibrous ingredients: Cut to 2cm wide and 5cm long.

Fibrous leafy vegetables (celery, kale, collard greens, etc.): Cut the stems into 5cm long and bundle up the leafy part as you insert them into the juicer.

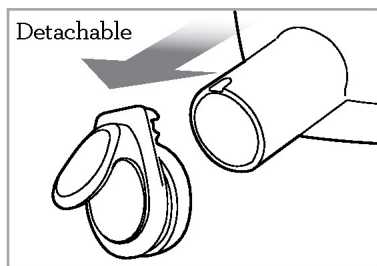
SOFT FRUITS & VEGETABLES (E.G. APPLES, ORANGES & TOMATOES)

Insert into the feeding basket.



Soft ingredients: Cut ingredients into 1-4 pieces. Insert the prepared ingredients into the feeding basket and push down the ingredient with the basket lid to extract.

SMART CAP



Use the smart cap to make mixed juice, block juice from dripping, or rinse between different juices.

- Juicing with the smart cap closed creates various mixed juice creations with different fruits and vegetables, milk, beans and other ingredients.
- After juicing, close the smart cap to stop juice from dripping, especially when disassembling the juicing bowl off of the base.
- When making different juices, quickly rinse any left over flavors by running a glass of water in the juicer with the smart cap closed.
- Leave the smart cap open when juicing ingredients that often creates foam during extraction. (e.g. apples, celery)
- Pay close attention when operating with the smart cap closed. Juice may overflow if the juice collected in the juicing bowl exceeds its capacity.

IF THE JUICER STOPS DURING OPERATION:

If the ingredients become jammed in the screw and the drum lid does not open, press the OFF button ensuring that the juicer comes to a complete stop. Then press and hold the REVERSE button until the ingredients become dislodged. Repeat REVERSE - OFF - FORWARD as often as needed to achieve the desired result. Let the juicer stop completely before using the REVERSE button to prevent malfunction.



If the juicer does not work after these steps, disassemble and clean the parts before operating the juicer again.

DISASSEMBLY

After juice and pulp have been completely extracted, switch the unit OFF.

If the remaining ingredients in the juicing bowl have not been extracted completely, the drum lid may not open easily. (After each extraction, run the juicer for additional 30 seconds to let the juicer extract the remaining pulp.)

When the drum lid is stuck, press the REVERSE - OFF - FORWARD button in the order, switching back and forth 2-3 times to dislodge. Then place your hands on top of the drum lid and firmly press down as you simultaneously turn the drum lid counter clockwise to open.

Depending on the ingredients, pour water down the feeding tube to rinse out the interior of the juicing bowl and then try to take off the drum lid.



Tips

1. Operating the juicer without ingredients can cause damage to the screw.
2. Do not continuously operate the juicer for more than 30 minutes. This can damage the motor from overheating. After continuous use, let the juicer rest for 30 minutes to cool down before starting another session.
3. Do not put hand, utensil, tong, or other objects into the feeding tube other than the provided pusher.
4. During operation, do not put spoon, spatula or other objects into the juice spout of the juicing bowl. If other object is put into the juice spout during operation, such materials can get stuck and damage the juicer parts.
5. Do not reinsert the extracted pulp into the juicer. This can cause the juicer to stop or cause the drum lid not to open.
6. After juicing ingredients with small seeds like grapes, thoroughly clean all the crevices on the bottom of the juicing screw.



Don'ts

DO NOT PUT THE FOLLOWING INGREDIENTS INTO THE JUICER

- ✗ Hard seeds
Peach, nectarines, apricot, plum, mango, etc.
Remove hard seeds from the ingredients before juicing.
- ✗ Hard or inedible skins
Pineapple, melon, mango, orange, etc.
Peel the skins from the ingredients before juicing.
- ✗ Frozen fruits or ice
Frozen strawberry, blueberry, raspberry, etc.
Completely thaw frozen fruits before juicing. Do not use ice.
- ✗ Vegetable/ animal oil
Sesame seed, butter, margarine, etc.
Do not extract ingredients containing vegetable or animal oil. This can reduce performance and even damage the juicer.
- ✗ Others
Coconut, sugarcane or hole grains.
Do not extract ingredients with no water content.



Care & Cleaning

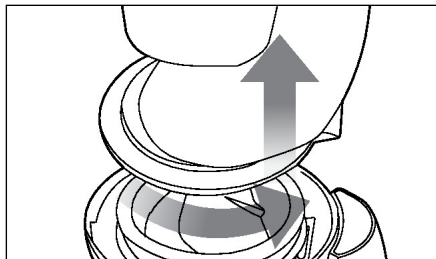
Extract all the remaining pulp in the juicing bowl before stopping the juicer.

For easier clean up, operate the juicer for an additional 30 seconds after the juice is extracted. Then fill the juicing bowl with water and run the juicer before opening the drum lid.

When the drum lid is stuck, press the REVERSE - OFF - FORWARD button in this order, switching back and forth 2 to 3 times to dislodge. Then place both hands on the drum lid and firmly press down while simultaneously turning the drum lid to open.

CLEANING THE JUICER

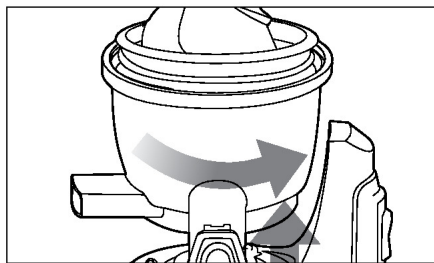
1. Switch OFF and unplug the power cord from the wall outlet.
2. Turn the drum lid counter clockwise to open.



WARNING

When moving the appliance, do not lift by grabbing the feeding tube. Always lift the appliance by grabbing the body or handle.

3. Turn the top-set counter clockwise and lift off the body.



4. Remove the juicing screw, strainer and rotation wiper unit from the juicing bowl. Clean with provided brush.



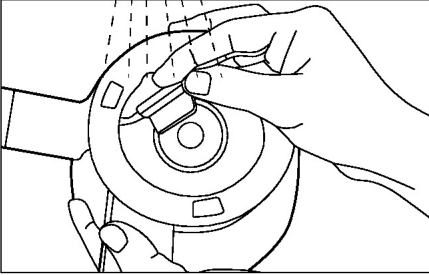
NOTE

Immediately clean the juicer after each use. If remaining residue in the juicer dries up, it can make disassembling and clean-up difficult. The excess build up can cause poor performance in future uses.

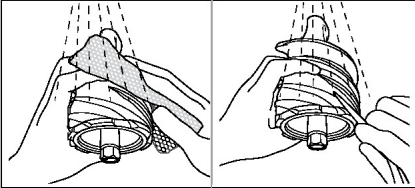
For easier disassembly, place the top-set in the sink and run the water through from the top of the top-set.

We do not recommend to wash any parts of the juicer in the dishwasher. Washing parts in the dishwasher can cause damage to them due to prolonged exposure to harsh detergents, hot water and pressure.

5. Place the juicing bowl under running water and unplug the compression silicone to clean the pulp spout.



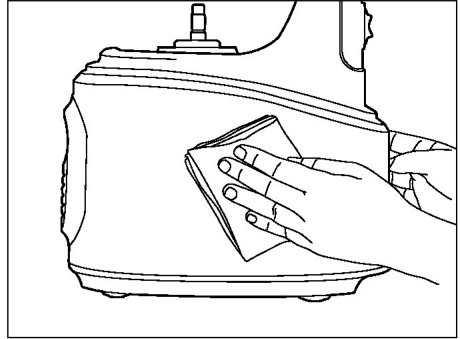
6. Under running water, clean the outside of the juicing screw with a dish scrub. Use the tip of the cleaning brush to push out any residue in the crevices on the bottom of the juicing screw.



Thoroughly clean the juicing screw ensuring that the juicing screw is clean without any residue. Thoroughly dry the bottom of the juicing screw.

After juicing ingredients with seeds, make sure to thoroughly clean the bottom crevice of the juicing screw. (If this area isn't properly cleaned, it can cause the part to be damaged).

7. Clean the body with a soft damp towel and dry.

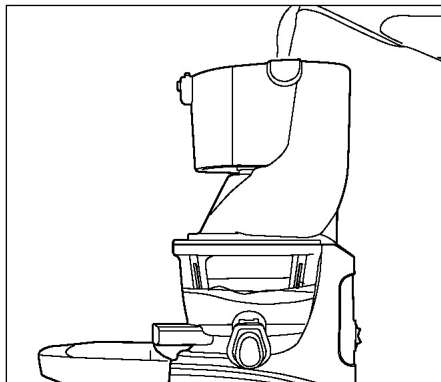


If the towel is dripping wet, make sure to squeeze out the excess liquid before using it on the juicer.

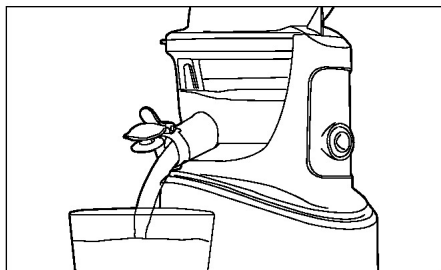
QUICK RINSING

It is not necessary to completely clean the juicer in between making multiple juices during a single juicing session. You can do a quick rinse instead.

1. With the smart cap closed, fill the juicing bowl with water and turn on the juicer.



2. Let it run for a moment. Open the smart cap and let the water run out of the juicing bowl.



When finished with juicing, always disassemble and clean thoroughly between juicing sessions to prevent residue buildup.

CLEANING SILICONE PARTS

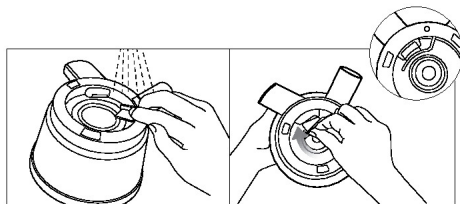
Clean the rotation wiper under running water. Thoroughly dry after cleaning. Before assembling the top-set, ensure that the compression silicone and silicone ring are firmly inserted.

If the compression silicone and silicone ring are not firmly inserted, juice may leak from the bottom of the juicing bowl.

COMPRESSION SILICONE

Unplug to clean.

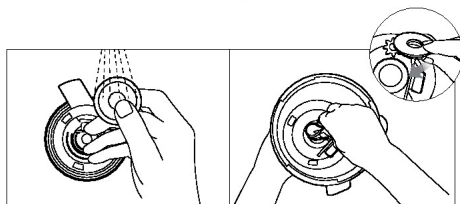
After cleaning, firmly insert into the slot below the pulp spout.



SILICONE RING

Remove the silicone ring from the juicing bowl to clean.

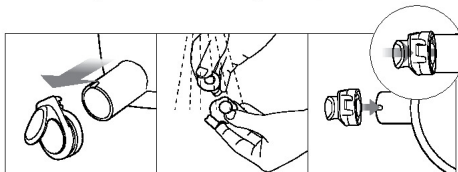
After cleaning, push in the silicone ring with the smaller surface facing down.



SMART CAP

Remove from the juice spout to clean.

After cleaning, attach the smart cap to the smart cap silicone on the juice spout.





Troubleshooting

PROBLEM	EASY SOLUTION
There is no power to the juicer	<ul style="list-style-type: none">• Check if the power cord is properly plugged in.• Check if the drum lid and the juicing bowl are properly assembled.• Check if the top-set and the body are properly assembled. <p>NOTE: Juicer will not operate if parts are not assembled properly.</p>
Low juice yield	<ul style="list-style-type: none">• Different ingredients hold different amounts of fluid that will yield different amounts of juice.• If the ingredients are not fresh, they may contain reduced amount of fluid, which will yield less juice. Soak ingredients in cold water for about 30 min prior to juicing for the best result.• Check if the compression silicone is firmly inserted.• If the ingredient itself has low water content, it may help to soak it in water before juicing.• If juicing ingredients with small seeds, after a few servings, it may reduce the juice yield. For best result, disassemble and wash the top set in between juicing.• If there is seed residue on the bottom of the strainer, this can affect juicer performance and the overall juice yield.
There is too much pulp in the juice	<ul style="list-style-type: none">• To reduce the fine pulp, clean the top-set frequently and extract the pulp.• Use a mesh strainer and put the juice through it to collect the unwanted pulp.• If the strainer and the screw are damaged and affecting the juicer's performance, it is recommended the parts be replaced.• The lifetime of each part may vary depending on length and method of use and ingredients extracted.
The drum lid will not close	<ul style="list-style-type: none">• Make sure the juicing screw is pushed all the way in to the strainer in order for the drum lid to close properly.• If the juicing screw is not properly in position, the drum lid may not close.

PROBLEM

EASY SOLUTION

Odd noise from the juicer

- Check if the parts are assembled correctly. Try reassembling the parts and listen for the odd noise.
- Do not start the juicer unless there are ingredients and/or liquid in it.
- Operating the juicer without ingredients can cause damage to the screw.
- If the juicer is operated without ingredients or liquid, the noise level can increase and also can lead to damage.
- The friction noise from the juicing screw and the strainer will disappear when ingredients are inserted into the juicer.
- If the noise occurs when ingredients are inserted into the juicer, check the size of the ingredients. Do not insert anything over 3cm in thickness.
- Depending on the type of ingredients, the dimensions can be smaller.
- The noise can occur if the juicer is operated on an uneven or slanted surface. Place the juicer on a horizontally flat surface when operating.

The extracted pulp is very moist

- During the very beginning of extraction, the pulp can be more moist.
- Depending on the ingredient's condition, the extracted pulp can be affected; especially when the ingredient is not fresh, the juice can be extracted with the pulp.

During operation, the juicing bowl shakes

- The juicing screw and the strainer are set up to crush and squeeze the ingredients. It is normal for the juicing screw and the strainer to vibrate.
- If the ingredient contains strong fibre, the vibration from the top-set may be stronger.

During juicing, the juicer stopped

- Check the power cord and make sure it is plugged in correctly.
- Check that all the parts are correctly assembled.
- If too many ingredients are inserted at one time, this can cause the juicer to stop.
- When the juicer stops because there are too many ingredients inserted in it, press the REVERSE - OFF - FORWARD button in this order, switching back and forth 2 to 3 times. The reverse setting will push the ingredients up and the forward setting will pull the ingredients down.
- After using more than 30 minutes, if the juicer stops due to the overload protection, let the juicer cool for 30 minutes to 1 hour before juicing again.
- If there are hard seeds within the ingredients, remove them before juicing. Hard seeds can damage the juicer.

Layers of separation in the juice

- Depending on the density of the ingredients, the extracted juice may show layers of different juices. It is different from separation due to oxidation caused by juicing with a high-speed juicer.

PROBLEM

EASY SOLUTION

The drum lid is stuck

- After juicing, let the juicer operate for another 30 seconds to extract the remaining pulp.
- If there is too much pulp in the top-set, this can cause the drum lid to not open. In this situation, press the REVERSE-OFF-FORWARD button in the order, switching back and forth 2 to 3 times. Then place both hands on the drum lid and firmly press down while simultaneously turning the drum lid to open.
- Pour water down the feeding tube to rinse out the insides and then try opening the drum lid.

Juice dripping down the body

- If the compression silicone on the bottom of the juicing bowl is not plugged in correctly, the juice may seep out on to the juicer body. Before assembling the parts, check and make sure the compression silicone is plugged in correctly.

Is it possible to juice ingredients with tough fibre?

- Ingredients like celery or ginger contain long fibers that may wrap around the juicing screw and affect the juicer's performance. When juicing fibrous ingredients, do not collect more than 1 lb. of juice. After collecting this quantity or less, clean the top-set completely before juicing again..

Discoloration of the plastic parts

- After juicing, if the juicer is not cleaned right away, the remaining pulp inside the top-set can dry up which can make disassembling and cleaning hard. This can also affect the juicer's performance and color.
- Ingredients that are rich in carotenoids such as carrots and spinach may dye plastic parts. When the parts are dyed with carotenoids, rub vegetable oil in to the dyed areas and use mild detergent to clean.
- Vegetable oil should only be used during clean-up for parts that are discolored. Do not use vegetable oil on the juicing screw or the strainer. If vegetable oil or oil from animal fat gets on the juicing screw or the strainer, this can affect the juicer's performance and may result in damaged parts.
- The silicone pieces on the top-set can be detached to be thoroughly cleaned.

Using for purposes other than juicing

- This juicer is designed to juice ingredients like fruits and vegetables.
 - Do not use the juicer for extracting vegetable oil.
 - Do not juice ingredients with high contents of vegetable/ animal oil.
 - If vegetable/animal oil gets on the juicing screw or the strainer, this can affect the performance of the juicer and could result in damaged parts.
-



Notes

Breville Customer Service Centre

Australian Customers

Mail: Locked Bag 2000
Botany NSW 1455
AUSTRALIA

Phone: 1300 139 798

Fax: (02) 9700 1342

Email: askus@breville.com.au

Web: www.breville.com.au

New Zealand Customers

Mail: Private Bag 94411
Botany Manukau 2163
Auckland NEW ZEALAND

Phone: 0800 273 845

Fax: 0800 288 513

Email: askus@breville.co.nz

Web: www.breville.co.nz

Breville
Thought for food

Breville is a registered trademark of Breville Pty. Ltd. A.B.N. 98 000 092 928.
Copyright Breville Pty. Ltd. 2017.

Due to continued product improvement, the products illustrated/photographed
in this brochure may vary slightly from the actual product.