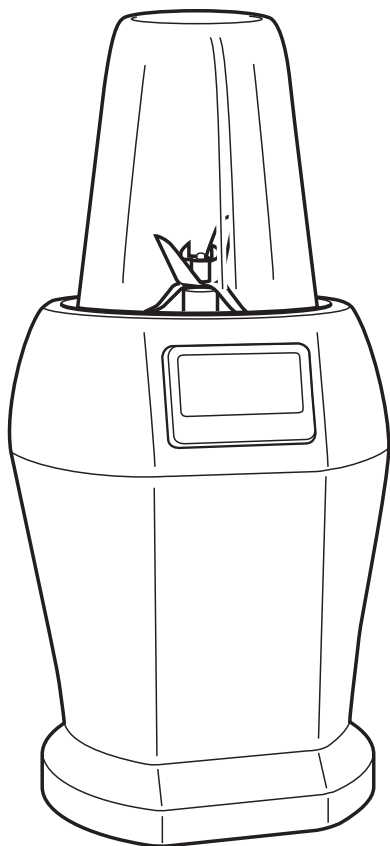


NUTRI NINJA®

Pro Blender

BL450NZ

OWNER'S GUIDE



IMPORTANT SAFETY INSTRUCTIONS

For Household Use Only

WHEN USING ELECTRICAL APPLIANCES, BASIC SAFETY PRECAUTIONS SHOULD ALWAYS BE FOLLOWED, INCLUDING THE FOLLOWING:

READ ALL INSTRUCTIONS BEFORE USING YOUR NUTRI NINJA™ PRO.

⚠ WARNING: Extension cords are not recommended for use with this product.

⚠ WARNING: The blades are not affixed to the unit. They are removable and very sharp. Handle with care!

⚠ CAUTION: In order to avoid a hazard due to inadvertent resetting of the thermal cut-out, this appliance must not be supplied through an external switching device, such as a timer, or connected to a circuit that is regularly switched on and off by the utility.

IMPORTANT: This appliance is not intended for use by persons with reduced physical, sensory or mental capabilities, or lack of experience and knowledge, unless they have been given supervision or instruction concerning use of the appliance by a person responsible for their safety.

Children shall not use or play with this appliance. Close supervision is necessary to keep appliance and cord out of reach of children during use.

⚠ WARNING: TO REDUCE THE RISK OF FIRE, ELECTRIC SHOCK OR INJURY:

- 1 **⚠ WARNING:** Remove utensils prior to processing. Failure to remove may cause the jar to be damaged or to shatter which may cause personal injury.
- 2 **⚠ CAUTION:** Do not blend hot liquids, doing so may cause excessive pressure build-up, resulting in risk of the user being burned.
- 3 **⚠ CAUTION:** We do not recommend grinding in any of our Nutri Ninja® Cups.
- 4 **⚠ CAUTION:** Remove the Pro Extractor Blades™ Assembly from the Nutri Ninja Cup upon completion of blending. Do not store ingredients before or after blending them in the cup with the blade assembly attached. Some foods may contain active ingredients or release gases that will expand if left in a sealed container, resulting in excessive pressure buildup that can pose a risk of injury. For ingredient storage in the cup, use only Sip & Seal Lid® to cover.
- 5 To protect against electrical shock, do not submerge the appliance or allow the power cord to come into contact with water or any other liquid.
- 6 **DO NOT** allow the appliance to be used by children. Close attention is necessary when used near children. This is not a toy.
- 7 Never leave an appliance unattended when in use.
- 8 Remove the power cord from the electrical outlet when not in use, before assembling



- or disassembling parts and before cleaning. To unplug, grasp the plug and pull from the electrical outlet. Never pull from the power cord.
- 9 **DO NOT** abuse the power cord. Never carry the appliance by the power cord or yank it to disconnect from electrical outlet; instead grasp the plug and pull to disconnect.
 - 10 **NO SERVICEABLE PARTS.** Incorrect reassembly or repair can cause a risk of electrical shock or injury to persons when the appliance is used. Contact Customer Service or Service Center for the repair or replacement under the warranty agreement.
 - 11 If the supply cord is damaged, it must be replaced by the manufacturer, its service agent or similarly qualified persons in order to avoid hazard.
 - 12 **DO NOT** let the power cord hang over the edge of table or counter or touch hot surfaces such as the stove.
 - 13 Always use appliance on a dry, level surface.
 - 14 Keep hands, hair, clothing, as well as utensils out of container while processing to reduce the risk of severe injury to persons or damage to the appliance. A scraper may be used but only when the appliance is not running.
 - 15 Avoid contact with moving parts.
 - 16 **DO NOT** attempt to sharpen blades.
 - 17 **DO NOT** use the appliance if Pro Extractor Blades Assembly is bent or damaged.
 - 18 To reduce risk of injury, never place the blade assembly on the base without the proper attachment.
 - 19 **DO NOT** operate this appliance on or near any hot surfaces (such as gas or electric burner or in a heated oven).
 - 20 The use of attachments or accessories including canning jars, not recommended by the manufacturer may result in fire, electric shock or personal injury.
 - 21 **DO NOT** remove the cup from the motor base while the appliance is running.
 - 22 To reduce the risk of injury, **NEVER** operate the appliance without the blade assembly in place; **DO NOT** try to defeat the interlock mechanism; make sure that the attachment is properly installed before operating the appliance.
 - 23 **DO NOT** expose cups to extreme temperature changes.
 - 24 **DO NOT** overfill.
 - 25 **DO NOT** operate the appliance empty.
 - 26 If the appliance overheats, a thermal switch will become activated and shut off the motor. To reset, unplug the appliance and let it cool down for approximately 30 minutes before using again.
 - 27 **THIS PRODUCT IS INTENDED FOR HOUSEHOLD USE ONLY.** Do not use this appliance for anything other than its intended use. Do not use outdoors.
 - 28 Appliance accessories are not intended to be used in the microwave. Do not place the cup or the lid in the microwave as it may result in damage to the accessories.

SAVE THESE INSTRUCTIONS

THIS BOOK COVERS MODEL NUMBERS:
BL450NZ 30

TECHNICAL SPECIFICATIONS

Voltage: 220-240V~, 50/60Hz
Power: 900 Watts

Nutri Ninja® Cup Capacity: 500ml
650ml



GMA-10223EA-006



Contents

Thank you for
purchasing the
Nutri Ninja®
Pro Blender

Getting to Know Your Nutri Ninja Pro Blender6

Before First Use8

Use of the Nutri Ninja Cups.....9

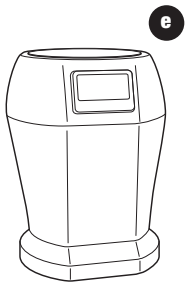
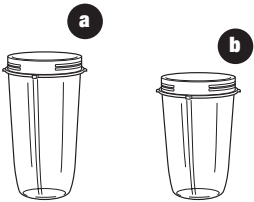
Suggested Uses.....10

Care & Maintenance11

Troubleshooting Guide.....12

Warranty15

Getting To Know Your Nutri Ninja® Pro Blender



- a** 650ml Nutri Ninja Cup
- b** 500ml Nutri Ninja Cup

- c** Pro Extractor Blades™ Assembly
- d** Sip & Seal™ Lid (x2)
- e** Motor Base

The Nutri Ninja® Pro Blender is a high powered innovative tool with a compact design and outstanding performance. It is perfect for ice crushing, chopping, blending, and nutrient and vitamin extraction*. Blend and go with the convenient Sip & Seal™ Lids, create delicious drinks to get you out the door quickly. Best results are achieved when you pulse.



FEATURES:

- Nutrient & Vitamin Extraction*
- 900 Watt Motor
- Personalised, healthy drinks and juices on the go
- Sip & Seal Lids for drinks on the go
- Nutri Ninja Cups, BPA Free
- Cord storage

*Extract a nutritious drink containing vitamins and nutrients from fruits and vegetables.

Before First Use

PLEASE KEEP THESE IMPORTANT SAFEGUARDS IN MIND WHEN USING THE APPLIANCE:

IMPORTANT: Make sure that the motor base is plugged in for use.

IMPORTANT: DO NOT attempt to operate the appliance without the lid on.

IMPORTANT: Never run the appliance empty.

IMPORTANT: Appliance accessories are not intended to be used in the microwave as it may result in damage to the accessories.

⚠ CAUTION: Do not immerse the motor base into water or any other liquid.

- 1 Remove all packaging material and labels from the appliance. Separate/remove all parts from each other.
- 2 Wash the lids, Nutri Ninja® Cups, Pro Extractor Blades™ Assembly in warm, soapy water. When washing the Pro Extractor Blades Assembly, use a dish-washing utensil with a handle to avoid direct hand contact with blades.

⚠ WARNING: Handle the Pro Extractor Blades Assembly with care when washing, as the blades are sharp.

- 3 Rinse and air dry thoroughly.
- 4 The lids, Nutri Ninja Cups, Pro Extractor Blades Assembly are all dishwasher safe. It is recommended that the lids and Pro Extractor Blades Assembly be placed on the top rack. Ensure that the Pro Extractor Blades Assembly are removed from the containers before placing in the dishwasher.
- 5 Wipe the motor base clean with a damp cloth.

Use of the Nutri Ninja® Cups

⚠ WARNING: Handle the Pro Extractor Blades™ Assembly with care, as the blades are sharp.

⚠ WARNING: Remove utensils prior to processing. Failure to remove may cause the Nutri Ninja Cup to be damaged or to shatter, which may cause personal injury.

⚠ WARNING: Never leave the appliance unattended while in use.

⚠ CAUTION: Do not blend hot liquids, doing so may cause excessive pressure buildup, resulting in risk of the user being burned.

⚠ CAUTION: Remove the Pro Extractor Blades Assembly from the cup upon completion of blending. Do not store ingredients before or after blending in the Nutri Ninja® Cup with the blade assembly attached. Some foods may contain active ingredients or release gases which will expand if left in a sealed container, resulting in excessive pressure buildup that can pose a risk of injury. For storage, only use Sip & Seal™ Lid to cover.

IMPORTANT: Make sure that the motor base is plugged in for use.

ASSEMBLY

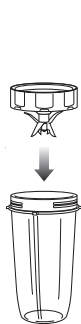


Fig. 1

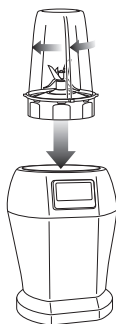


Fig. 2

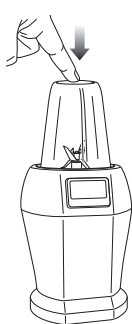


Fig. 3

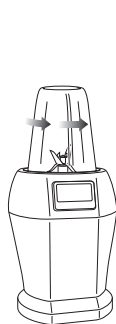


Fig. 4

REMOVAL

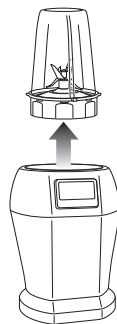


Fig. 5

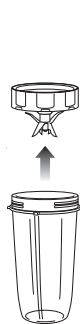


Fig. 6



For best results, use short **"PULSES"**!

- 1 Review warning and caution statements above before proceeding to number 2.
- 2 Place the motor base on a clean, dry, level surface such as a counter or tabletop.
- 3 Make sure that the motor base is plugged in for use.
- 4 Add ingredients to the cup.
NOTE: Do not overfill! To avoid spilling, do not add ingredients past the "MAX" fill line.
- 5 Place the Pro Extractor Blades Assembly onto the cup and twist it on tightly until you have a good seal. **(Fig. 1)**
- 6 Turn the cup upside down and place it onto the motor base, aligning the tabs on the cup with the motor base. Turn it clockwise, the unit is ready for use. **(Fig. 2)**
- 7 Press down on the top of the cup in short intervals to activate. **(Fig. 3)**
- 8 When you have reached your desired consistency, stop the appliance by removing your hand from the cup.
- 9 To remove the cup, ensure that the motor has stopped running. Then turn the cup anticlockwise **(Fig. 4)** and pull straight up to remove. **(Fig. 5)**
- 10 Turn the cup upright and remove the Pro Extractor Blades Assembly by twisting the Pro Extractor Blades Assembly anticlockwise. **(Fig. 6)**
- 11 Do not store blended contents with the Pro Extractor Blades Assembly attached.
- 12 Place the Sip & Seal Lid onto the Nutri Ninja Cup, twist to seal and enjoy.
- 13 For storage, only use Sip & Seal Lid to cover.
- 14 Be sure to store the Pro Extractor Blades Assembly attached to an empty cup when not in use.
- 15 Make sure that the motor base is unplugged when not in use.
- 16 To remove the motor base unit, tip the unit forward from the rear to easily disengage the suction cups.

Suggested Uses

PURPOSE / FUNCTION	SUGGESTED CUP	TYPE OF FOOD
Chopping / Pulsing	500ml Nutri Ninja® Cup 650ml Nutri Ninja Cup	Salsa Leafy Herbs Nuts Chocolate
Grating	500ml Nutri Ninja Cup 650ml Nutri Ninja Cup	Cheese
Mixing	500ml Nutri Ninja Cup 650ml Nutri Ninja Cup	Batters Dips
Sauces*	500ml Nutri Ninja Cup 650ml Nutri Ninja Cup	Vinaigrettes Salad Dressings Simple Sauces*
Frozen Blending	500ml Nutri Ninja Cup 650ml Nutri Ninja Cup	Ice Frozen Fruit Ice Cream
Nutrient Juices/Smoothies	500ml Nutri Ninja Cup 650ml Nutri Ninja Cup	Fruits Vegetables Leafy Greens

⚠ CAUTION: Do not blend dry ingredients unless pulsing for short intervals per the instructions. Continuous blending dry ingredients will overheat the blender.

* When blending sauces, make sure they're cooled to room temperature first - Ninja® containers are not intended for hot blending.

FILLING YOUR NUTRI NINJA®

Want to create smooth and delicious drinks using your Nutri Ninja Cups. Simply add ingredients to the container in the order they appear in each recipe, or follow the guideline below when creating your own customised recipes. **(Fig. 1)**

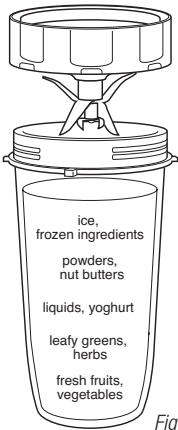


Fig. 1

Care & Maintenance

HOW TO CLEAN

⚠ CAUTION: Make sure that the motor base is unplugged from the power source before inserting or removing any attachment and before cleaning.

⚠ CAUTION: DO NOT immerse the motor base into water or any other liquid.

- 1 Separate/remove all parts from each other.
- 2 **Hand Washing:** Wash lids, Nutri Ninja® Cups and Pro Extractor Blades™ Assembly in warm, soapy water. When washing the Pro Extractor Blades Assembly, use a dish-washing utensil with a handle to avoid direct hand contact with blades. Handle Pro Extractor Blades Assembly with care to avoid contact with sharp edges. Rinse and air dry thoroughly.

Dishwasher: Containers, lids, and Pro Extractor Blades Assembly are all dishwasher safe. The lids and blade assemblies are top rack dishwasher safe. Ensure that the blade assemblies are removed from the containers before placing in the dishwasher.

⚠ WARNING: Handle the Pro Extractor Blades Assembly with care when washing, as the blades are sharp. Contact with the blades' edges can result in laceration.

- 3 Wipe the motor base clean with a damp cloth.

NOTE: If the appliance needs servicing, please call Customer care at: AUST: 1800 890 840 or NZ: 0800 002 999.

HOW TO STORE

- 1 Store the Nutri Ninja Pro Blender upright with the blade assembly attached to the Nutri Ninja Cup. Do not place anything on top. Store the rest of the attachments in a safe place where they will not be damaged and won't cause harm. Loosely wrap the power cord around the cord wrap.

NOTE: Do not store blended or unblended ingredients in the Nutri Ninja Cup with the blade assembly attached.

RESETTING THE MOTOR THERMOSTAT

The Nutri Ninja Pro Blender features a unique safety system which prevents damage to the unit's motor and drive system should you inadvertently overload your appliance. If the appliance is being overloaded, the motor will stop. To reset the appliance, follow the resetting procedure below:

- 1 Unplug the appliance from the electrical outlet.
- 2 Remove and empty the cup and ensure that no food is jamming the Pro Extractor Blades Assembly.
- 3 Allow the appliance to cool for approximately 30 minutes.
- 4 Re-install the cup onto the base and re-plug the appliance into the electrical outlet.
- 5 Proceed to use the appliance as before while making sure not to exceed the recommended maximum capacities.

Troubleshooting Guide

PROBLEMS	POSSIBLE REASONS & SOLUTIONS
Motor doesn't start or blade assembly doesn't rotate.	<ul style="list-style-type: none">For the cups, make sure that the tabs are seated in the slots and turned clockwise.
Food is unevenly chopped.	<ul style="list-style-type: none">Either you are chopping too much food at once, or you are not pulsing properly. Reduce the amount of food in the cup.
Food is too finely chopped or too watery.	<ul style="list-style-type: none">The food has been over processed. Use short pulses for best results. Press down on the cup in short intervals.
You cannot achieve snow from ice cubes.	<ul style="list-style-type: none">For best results use ice straight from the freezer. Try using short pulses instead of one long one.Make sure the cup is completely dry before adding ice.
Cup is leaking.	<ul style="list-style-type: none">Make sure that your lid or blade assembly is properly assembled to the cup. Leaking may occur if it is misaligned when twisted onto the cup. Turn the lid tightly clockwise.
Unit doesn't turn on.	<ul style="list-style-type: none">Make sure the unit is plugged in.Rotate and press down on the cup to turn the unit on.Make sure the blade assembly is properly assembled to the cup and that it is not misaligned.
Unit doesn't turn off.	<ul style="list-style-type: none">Unplug the power cord from the electrical outlet and call customer service for support.
Doesn't mix well.	<ul style="list-style-type: none">Pulse ingredients for best results. Press down on the cup in short intervals for even blending and chopping. For frozen ingredients, pulse in short intervals of 2-5 seconds and repeat.
Lid/blade assembly will not properly align to the cup.	<ul style="list-style-type: none">Set the cup on a level surface. Place the lid or blade assembly on top of the cup and align the threads so that the lid/blades sit flat on the cup. Twist clockwise so that the lid/blades evenly align to the cup until you have a tight seal.

Notes

[illegible]

Notes

[illegible]

ONE (1) YEAR LIMITED REPLACEMENT WARRANTY STATEMENT

If your product becomes defective due to faulty material or workmanship within a period of 1 year from the date of purchase, we warrant to do the following:

- **For New Zealand Consumers:** We will replace the product with a new product, free of charge, or repair the product at our cost, at our discretion.
- **For Australian Consumers:** Our goods come with guarantees that cannot be excluded under the Australian Consumer Law. You are entitled to a replacement or refund for a major failure and for compensation for any other reasonably foreseeable loss or damage. You are also entitled to have the goods repaired or replaced if the goods fail to be of acceptable quality and the failure does not amount to a major failure.

Your warranty is subject to the following conditions:

- **DO NOT** operate the appliance with a damaged plug or cord, or if the unit has been dropped, damaged or dropped in water. To avoid the risk of electric shock, do not disassemble or attempt to repair the appliance on your own. If the supply cord is damaged, **it must be replaced by a qualified electrician in order to avoid a hazard.** Incorrect re-assembly or repair can cause a risk of electrical shock or injury to persons when the appliance is used.
- The product has not been misused, abused, neglected, altered, modified or repaired by anyone.
- The product has been subjected to fair wear and tear.
- The product has not been used for trade, professional or hire purposes.
- The product has not sustained damage through foreign objects, substances or accident.

Your warranty does not cover:

- Components that are subject to natural wear and tear caused by normal use in accordance with operating instructions.
- Unauthorised/improper maintenance/handling or overload is excluded from this warranty.
- For guarantee claims you will need to submit a proof of purchase in the form of a valid receipt that displays date and place of purchase.

This warranty does not replace but is in addition to your statutory rights.

This warranty does not apply to accessories supplied with the product.

This warranty applies only to the original purchaser and may not be transferred.

Replacement products will be covered by the limited warranty for the balance of the warranty period from the date of the original purchase.

Please note:

Only defective product or parts returned to place of purchase will be replaced under this warranty.

New Zealand Contact:

Brand Developers Limited
Unit H, 686 Rosebank Road,
Avondale, 1026 Auckland, NEW ZEALAND
NZ Customer Care: 0800 002 999

Australia Contact

Brand Developers Aust Pty Ltd
Unit 3, 2 Roussos Place,
Truganina VIC 3029, AUSTRALIA
AUST Customer Care: 1800 890 840



**Exclusively Distributed
Throughout Australasia by:**

Brand Developers Aust Pty Ltd

Unit 3, 2 Roussos Place,
Truganina, VIC 3029, AUSTRALIA

AUST Customer Care: 1800 890 840

Brand Developers Limited

Unit H, 686 Rosebank Road,
Avondale, 1026 Auckland, NEW ZEALAND

NZ Customer Care: 0800 002 999

Copyright © SharkNinja Operating LLC 2016

Printed in China

Ninja and **Nutri Ninja** is a registered trademark of
SharkNinja Operating LLC.

Pro Extractor Blades and **Sip & Seal** are trademarks of
SharkNinja Operating LLC.

Illustrations may differ from actual product. We are constantly striving to improve
our products, therefore the specifications contained herein are subject to change
without notice.

BL450NZ_30_IB_160831_1



GMA-10223EA-006