

# TOP LOAD WASHER

CHiQ

WTL80FDW

WHITE

CAPACITY

**8KG**

AVERAGE WATER USE

**110L**

SPIN SPEED

**650 RPM**

ENERGY RATING

**2 star**

WIDTH

**580 mm**

HEIGHT

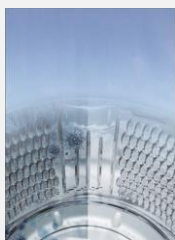
**960 mm**

DEPTH

**625 mm**

WELS RATING

**3 star**



## DRUM CLEAN

You can clean the washing machine drum from time to time to keep the machine free from bacteria.



## ONE TOUCH

With one touch of the "Smart clean" Button, the washing process will be completed automatically.



## WATERFALL FLOW

3D water flow, supports twist and tangle free! Perfect balance between Washing performance and care of clothes.



## SOFT CLOSE LID

Soft closing lid to prevent accidents and gives an unhindered view of what's in your washing machine.

SPECIFICATIONS

CHiQ Model	WTL80FDW	-----	-----
Total capacity	8 kg	<b>Supply</b>	
Maximum spin speed	650 RPM	Installation type	Free standing base
MEPS (star)	2	Voltage (V)	220-240
WELS (star)	3	Frequency (Hz)	50
Cabinet Colour	White	Rated input power (Watt)	1750
Display Colour	Black	Water pressure range	0.03 ~ 0.80
Product Dimensions (WxHxD) mm	580 x 960 x 625	Water inlets	Cold-hot
Packing Dimensions (WxHxD) mm	666 x 1045 x 676	Water inlets position	From back
Net Weight (kg)	37	Water inlet pipe length (m)	1.5 m
Gross Weight (kg)	42.5		
Display	7-segment (88)		
Tub / Drum material	Plastic / Stainless steel		
Loading door	Glass with damper		
Control Type	Digital		
Tub dimensions(mm)	Φ475		
EAN Code	6926130560006		

FEATURES

One Touch smart program
Delay start
Child lock
Detergent Dispenser
Glass lid with damper
Fuzzy logic function
Failure detection system
Drain pump with filter

Warranty

Washing Machine	3 years
Motor	10 years parts warranty (* 3 Years parts & labour + 7 years on Motor - parts only).

WASHING PROGRAM

<b>Number of programs</b>	<b>9</b>
One Touch	Yes
Daily	Yes
Cotton	Yes
Quick	Yes
Bedding	Yes
Gentle	Yes
Spin	Yes
Heavy Duty	Yes
Tub Clean	Yes