

EFR31223

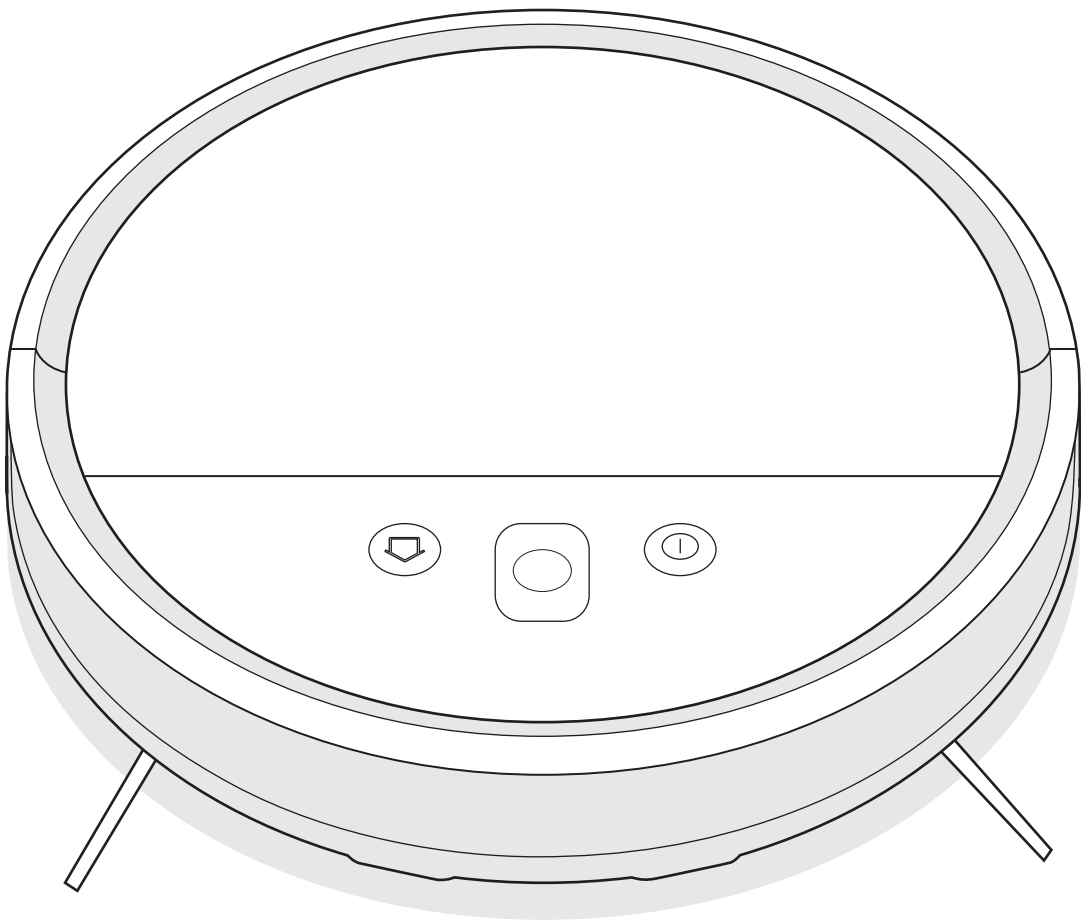



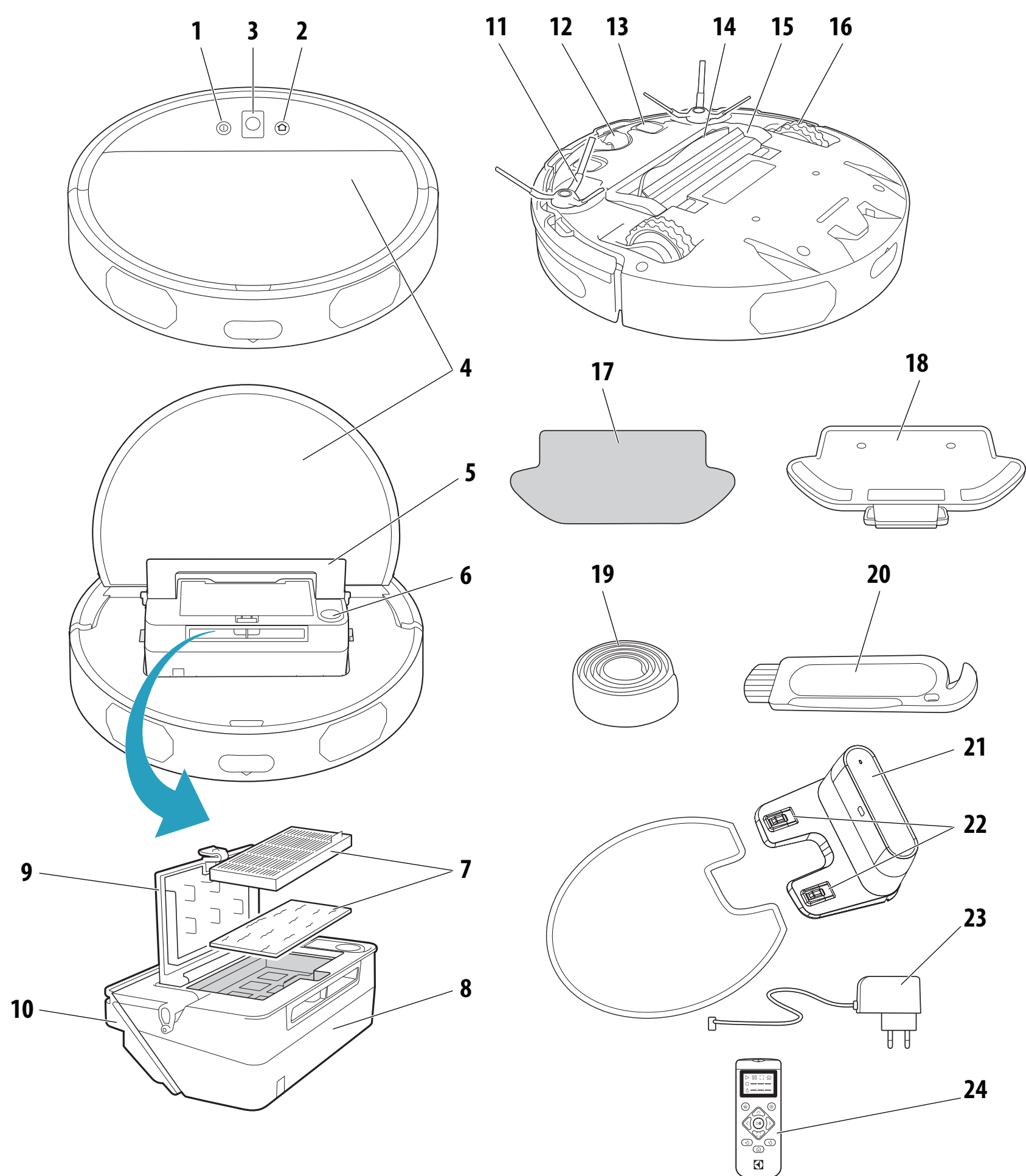


TABLE OF CONTENTS:

<u>OVERVIEW OF THE ROBOT</u>	2
<u>HOW TO USE THE ROBOT VACUUM CLEANER</u>	3
<u>HOW TO CONNECT TO THE APP</u>	4
<u>TIPS ON HOW TO GET THE BEST RESULTS</u>	7
<u>EMPTYING THE DUST CONTAINER</u>	8
<u>CLEANING THE FILTER</u>	9
<u>MAINTENANCE</u>	11
<u>CHANGING THE BATTERIES</u>	12
<u>SAFETY PRECAUTIONS</u>	13
<u>CONSUMER INFORMATION AND SUSTAINABILITY POLICY</u>	14

	USE ONLY :			
KOREA:	DS-ER71	DBS012A-2000600K		
SINGAPORE:	DS-ER71	DBS012A-2000600G		
TAIWAN:	DS-ER71	DBS012A-2000600T		
AUSTRALIA & NEW ZEALAND:	DS-ER71	DBS012A-2000600A		
THAILAND & VIETNAM:	DS-ER71	DBS012A-2000600K		

Overview of the robot



Description of your robot vacuum cleaner

- 1

Power button / Off button (long press)
- 2

Home button
- 3

Camera
- 4

Top lid
- 5

Dust container handle
- 6

Water tank lid
- 7

Filter kit
- 8

Water tank
- 9

Dust container lid
- 10

Dust bin
- 11

Side brushes
- 12

Front wheel
- 13

Charging connectors
- 14

Center brush
- 15

Brush frame
- 16

Main wheels
- 17

Mopping pad
- 18

Mopping cover
- 19

Magnet strip
- 20

Cleaning brush
- 21

Charging stand
- 22

Charging connectors
- 23

Power adaptor and cord
- 24

Remote controller

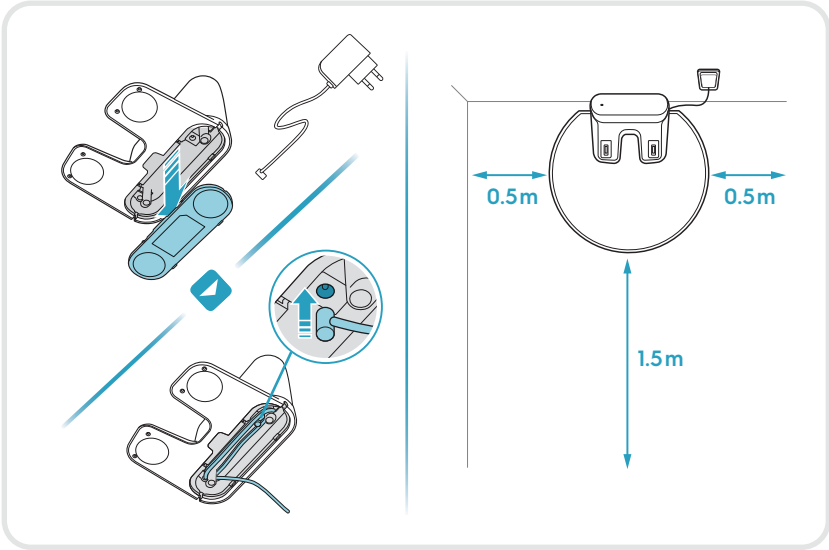
* Accessories may vary from model to model.

How to use the robot vacuum cleaner

Installation of the robot vacuum cleaner

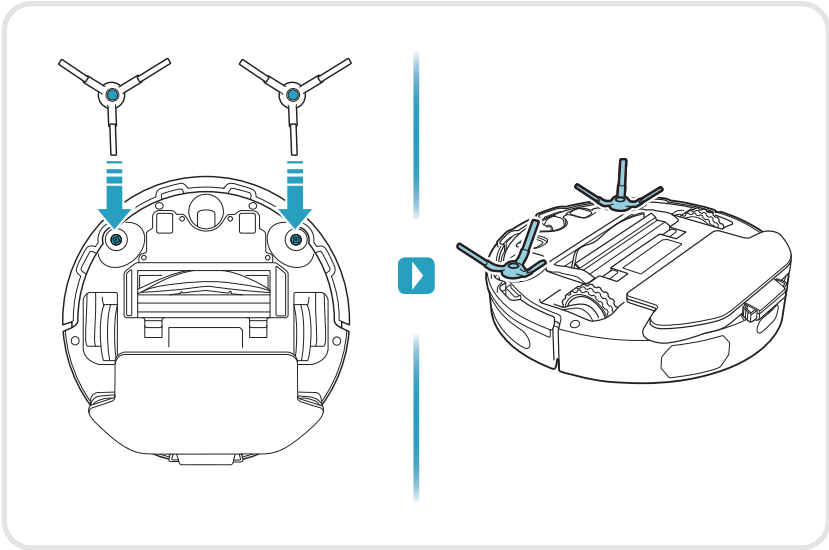
1. Place the Charging base on the floor against the wall. Plug the adaptor to the power jack on the bottom of the base. Connect the Power cord plug to the main socket. Wind up excessive cord on the back of the base. Make sure there is an empty area of 0.5 m on the sides and 1.5 m in front of the Charging base.

Note: Place the base in range of the WiFi router.



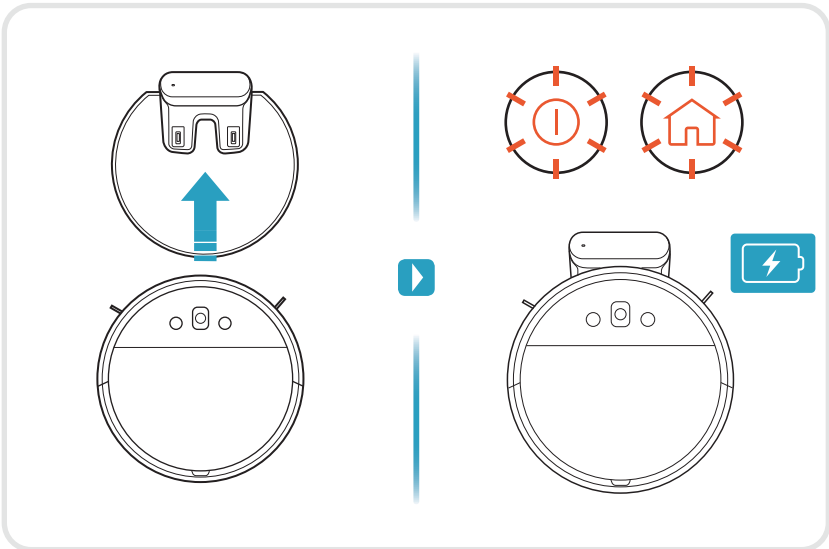
2. Attach the side brushes.

Note: If the robot is used to clean rooms with wall-to-wall carpet, remove the side brushes for best cleaning results.



3. Place the robot on the charging base.

The buttons will flash to indicate that the robot is recharging.

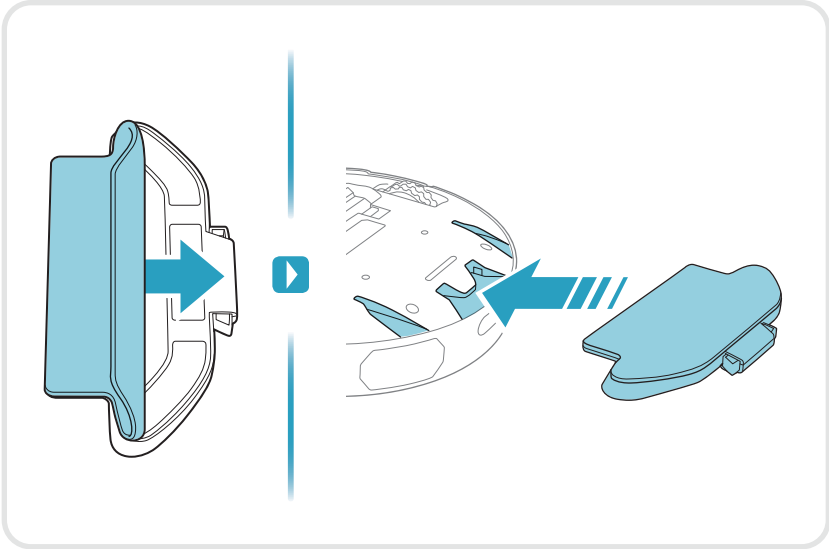


Preparing the mopping function

1. Attach the mopping cover.

Attach the mopping pad with the cover and place the mopping cover on the bottom of the robot.

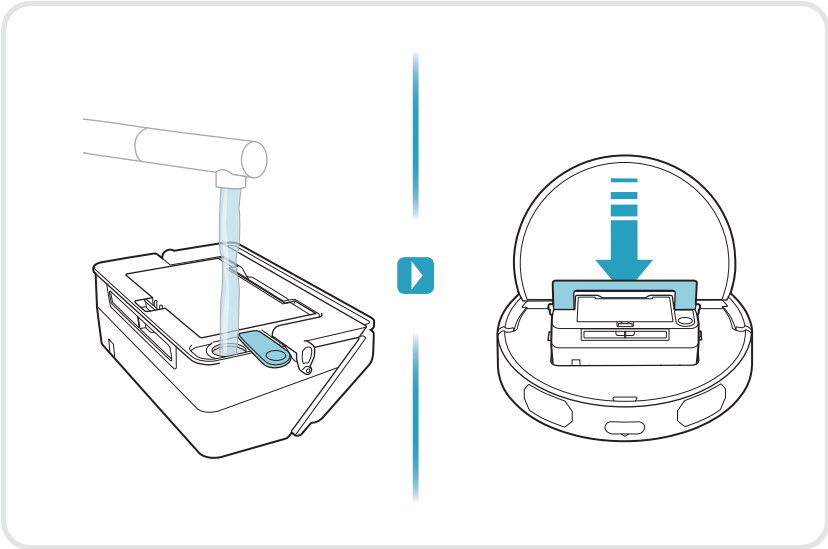
Note: Only be done when mopping is to be performed- i.e. not when vacuuming carpets.



How to use the robot vacuum cleaner

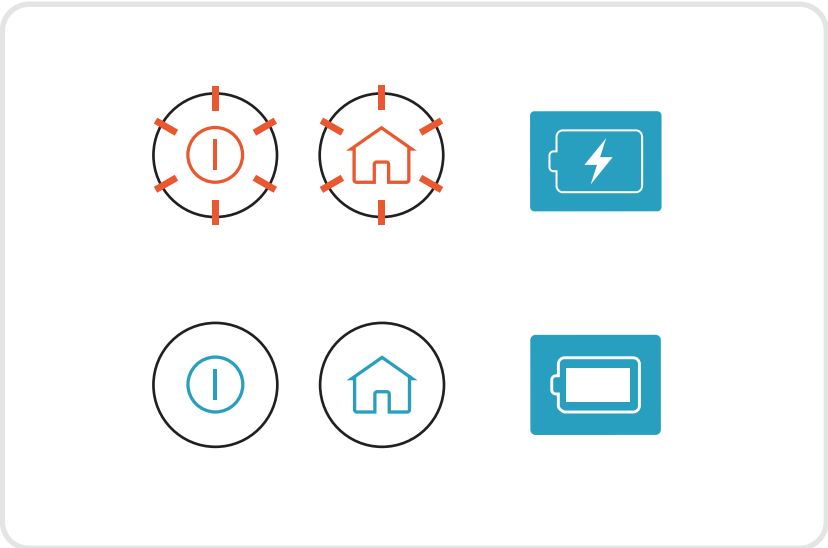
2. Fill the water tank.

Take out the dust container and fill the water tank with water.



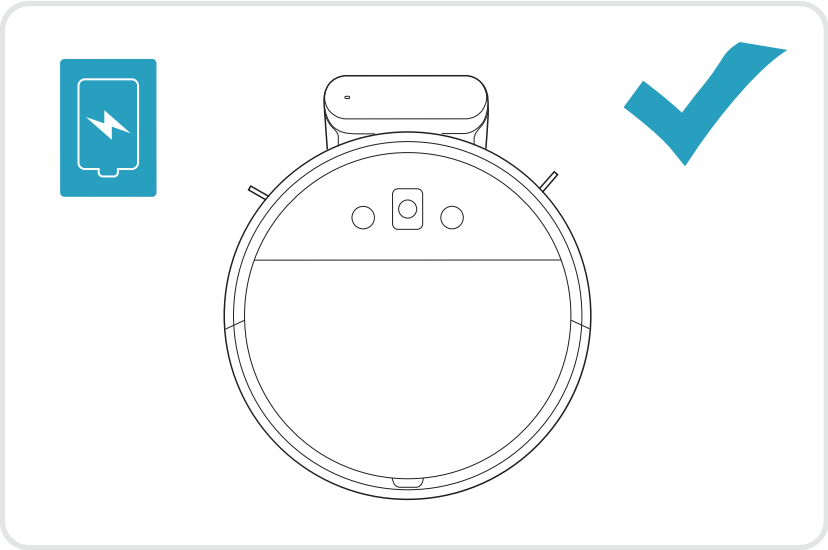
Robot status

- 1. Blue light button on:** the robot has been fully charged/ or the robot is working/paused.
- Blue light button pulse:** provisioning.
- Blue light button breathe:** firmware update/ power on.
- Orange(Yellow) light button breathe:** The robot is charging.
- Orange(Yellow) light button pulse:** The battery is insufficient, or the robot is going home.
- Orange(Yellow) light button on:** The robot is offline/ not connected to WIFI.
- Red light button pulse:** error (includes off the floor)



2.To preserve the battery life and performance:

- Always keep the robot charging when not in use.
- Charge it as soon as possible in the charging base after the cleaning cycle. Waiting too long might affect the batteries.

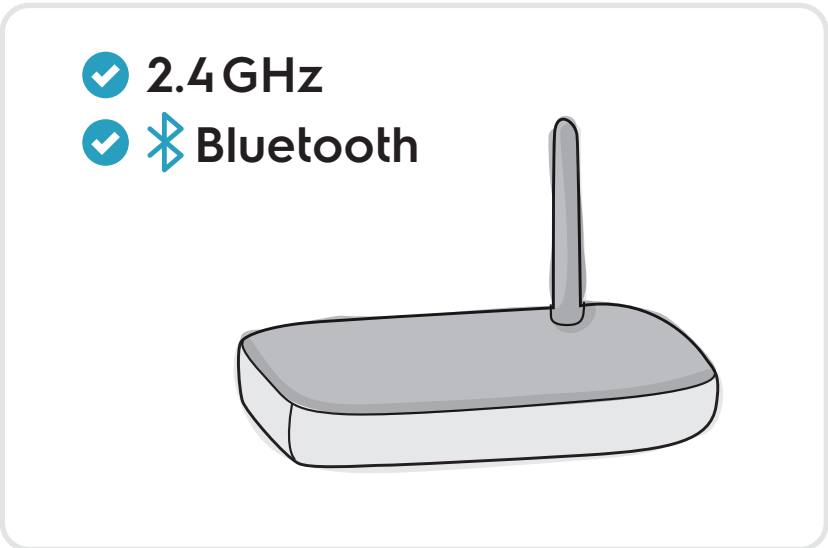


How to connect to the app

We recommend to download the App and update the software before the first use.

- 1.Download the Electrolux App in the App Store or Googleplay** and then follow the instruction to create the account and connect to the robot.

Note: Make sure that the phone is connected to the home WiFi (2.4 GHz).

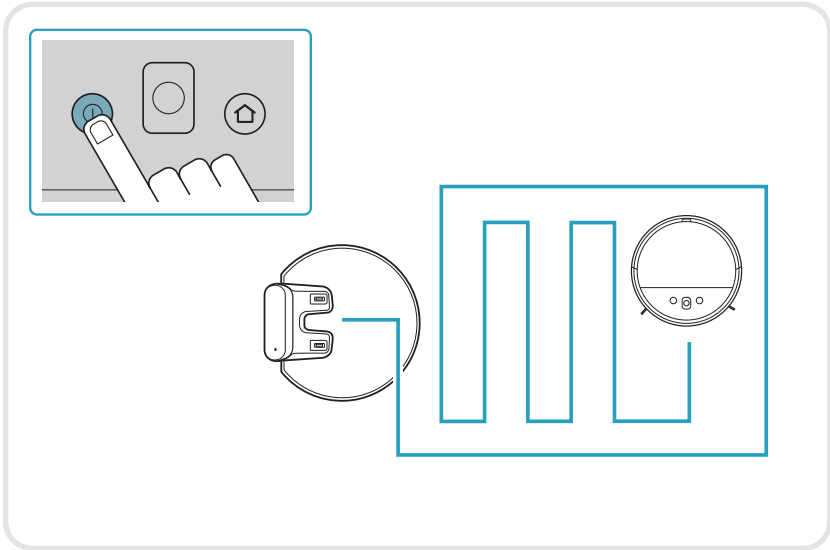


How to use the robot vacuum cleaner

Start Cleaning

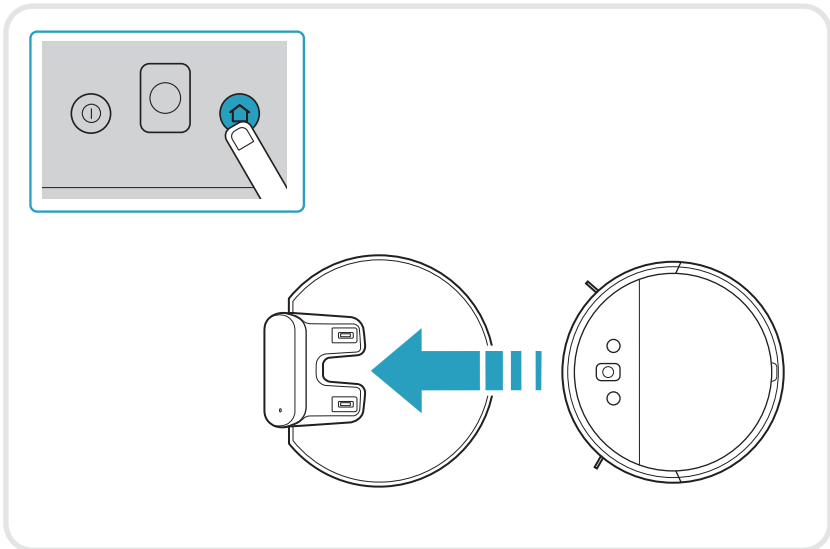
Start cleaning: Place the robot on the charging base or on the area you want to clean. Press power button, the robot will start cleaning the area automatically.

Note: Press power or home button once to pause cleaning, press again to resume it.



Docking

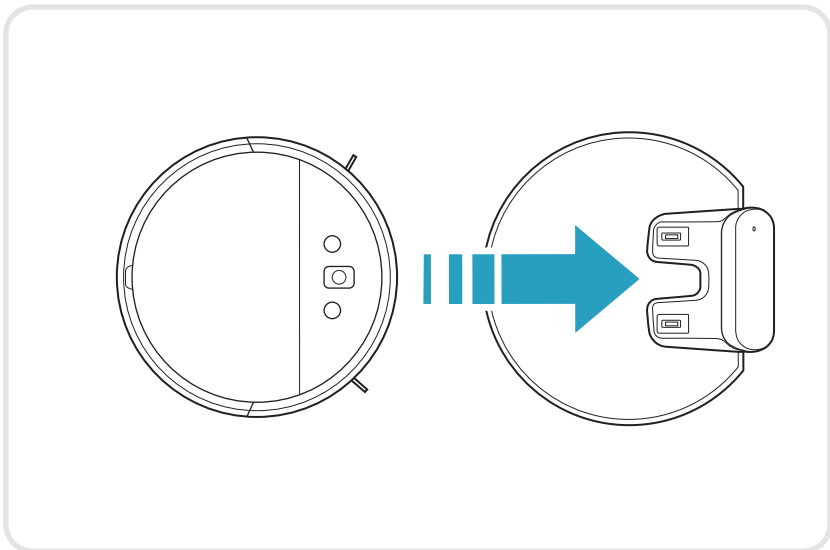
Stop cleaning and send the robot to the charging base: Press the home button. If the robot has a map of the area it will try to return to the charger. If the robot is started on the floor without a map it will return to the start position.



Auto Docking/Charging

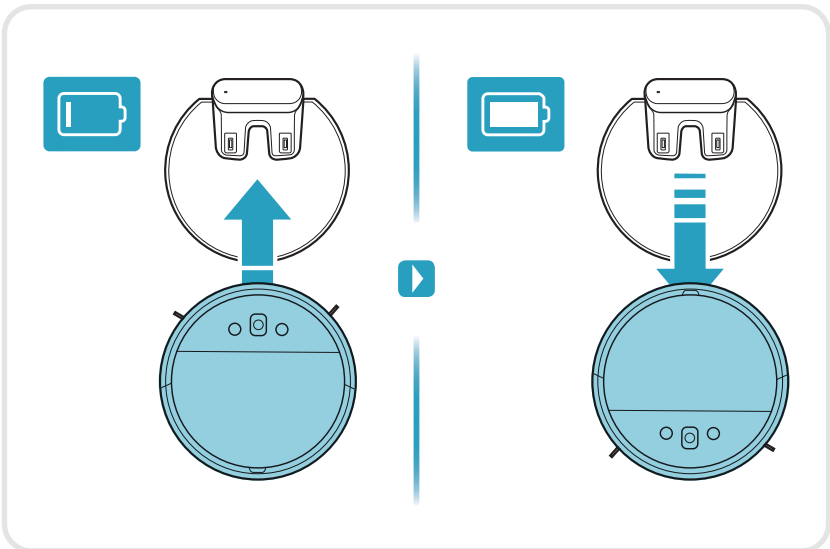
When cleaning is completed, the robot automatically returns to the charging base.

Note: If the robot has a map of your home it will always try to return to the charger after cleaning.



Auto charging during cleaning cycle

Should recharging be needed during cleaning, the robot will return to the charging base automatically. The power and home button will flash to indicate that the robot is charging and then it will resume where it stopped. The robot will recharge up to 80% to resume cleaning quicker. Full charging time is around 4 hours.



Tips on how to get the best results

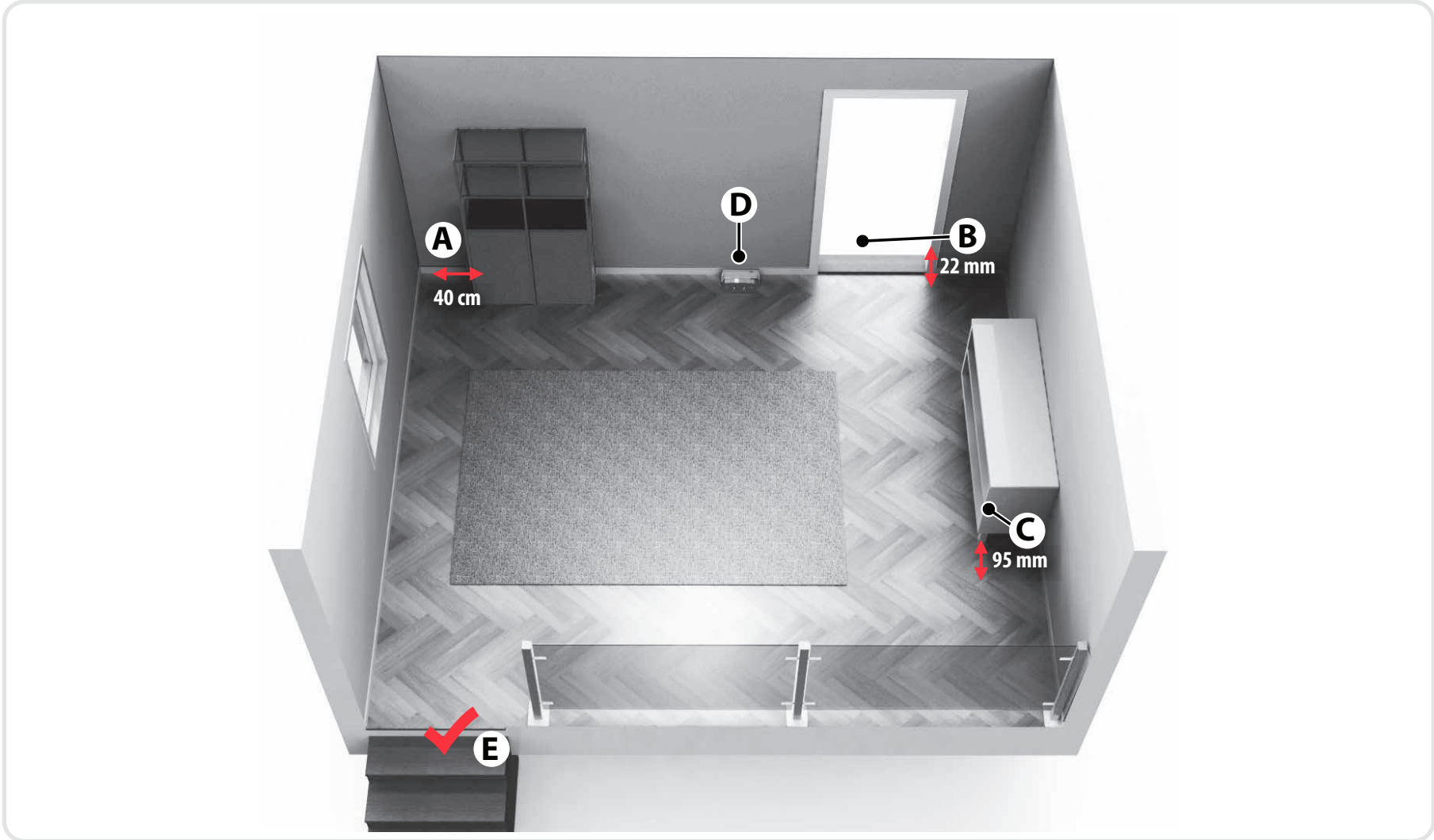
Before cleaning, remove smaller and fragile objects such as clothing, curtain strings, papers and power cords from the floor. If the device passes over a power cord and drags it, there is a risk that an object could be pulled off a table or shelf.

Larger/taller objects such as chairs can be left as the robot will clean around them.

Dust emptying between scheduled cleanings

To get the most out of scheduled cleaning, empty the dust container regularly.

Preparing the cleaning area

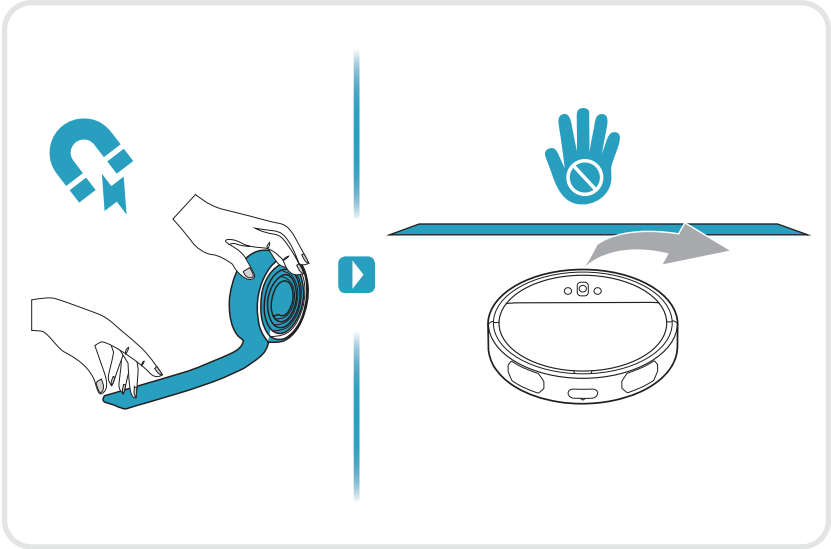


- (A) Leave a space of 40 cm around furniture without legs.
- (B) The robot easily crosses thresholds with a height up to 15 mm.
- (C) It cleans under furniture with more than 95 mm space under.
- (D) Place the charging base on the left side of a door.
- (E) The robot detects stairs and steep cliffs.

Use the magnet strip

To limit the robot to clean a specific area, you can use the magnet strip to set up the area.

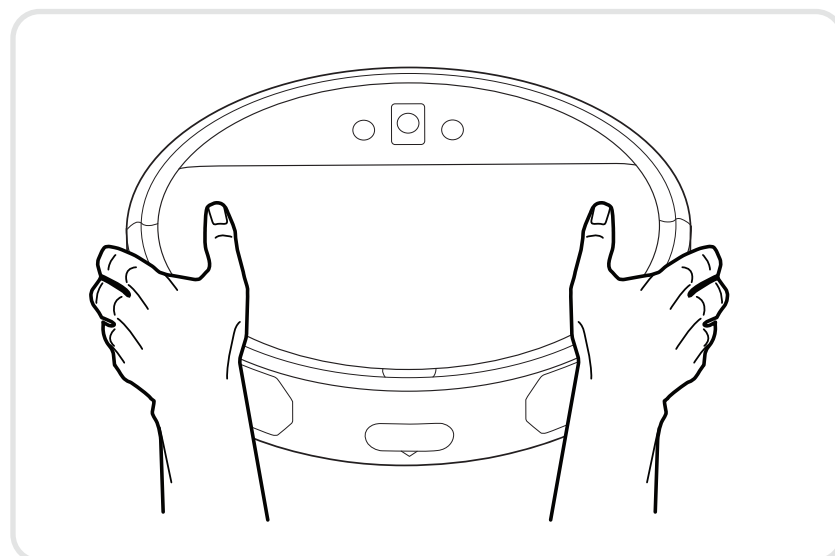
1. **Set up the specific cleaning area with the magnet strip stick on the floor.**
The robot will not cross the magnetic strip while cleaning.



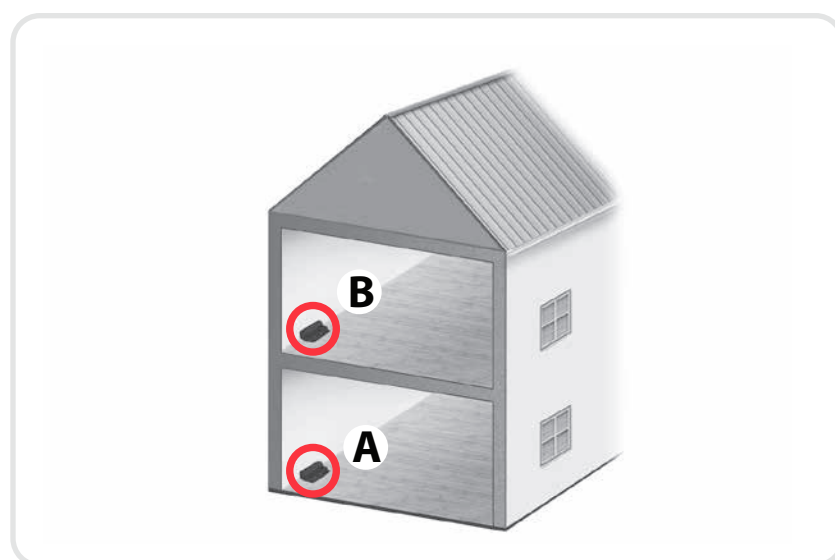
Tips on how to get the best results

Always carry the robot with two hands keeping the front up. Manual moving of the robot:

Moving the robot during the cleaning process is not advised, as it might restart the cleaning from the beginning.



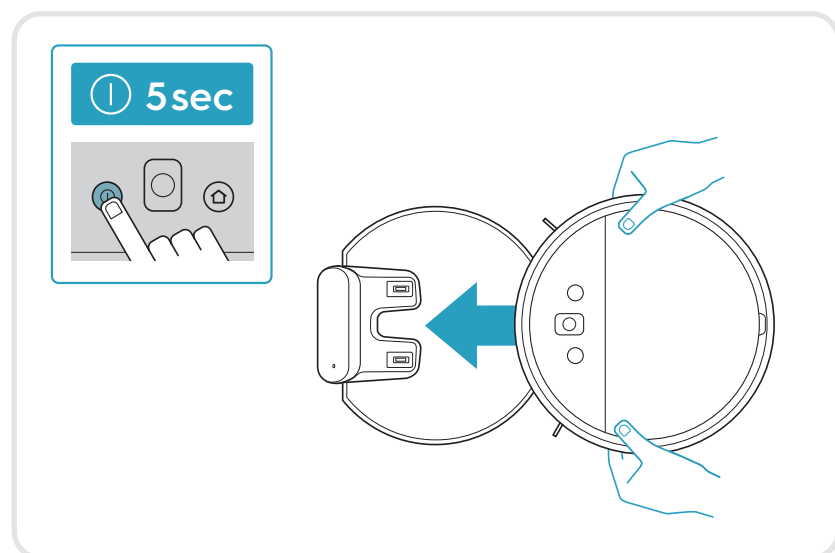
Cleaning of a house with more than one floor can be facilitated by using an extra charging base on each floor. (Ref: DS-ER71)



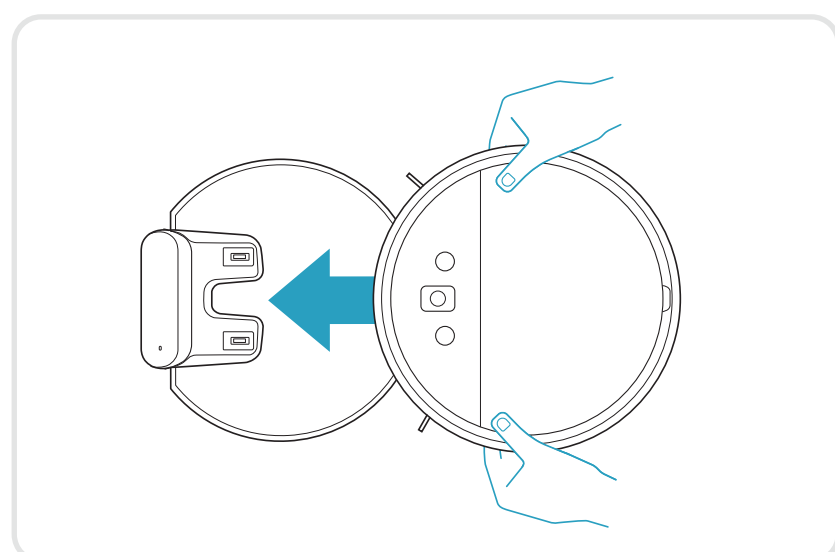
Turn the robot off

Turn the robot off: There is also the possibility to turn the robot completely off, in case you are not using it for a certain amount of time. To do this, please follow the steps:

- Lift and carry the robot away from the charging base.
- Press the power button on the robot for 5 seconds.
- When the button turns dark, the robot is fully off.



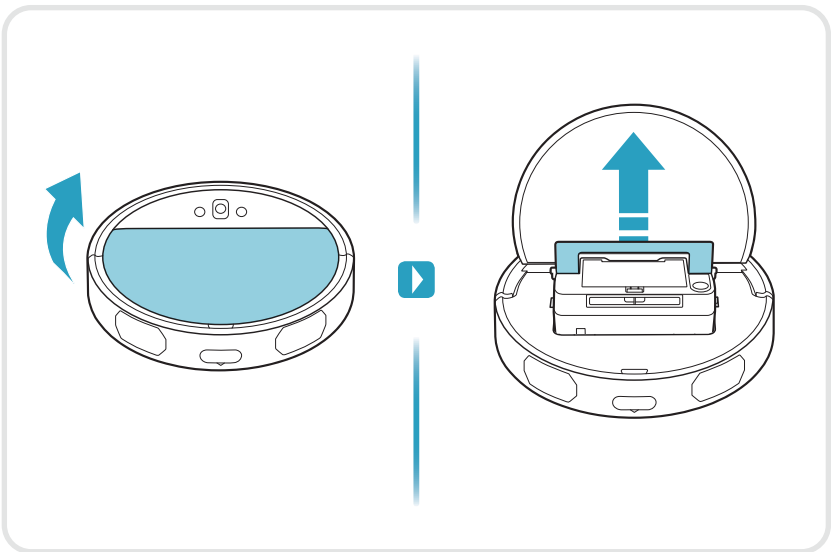
To restart the robot, insert it into the charging base again. It is also possible to turn it off in the charging base, then you need to lift it and put it in the charging base again to use it.



Emptying the Dust container, Replacing/Cleaning the Filter

Emptying the Dust container

1. Open the top lid by swinging it upwards, hold the handle and take out the dust container.

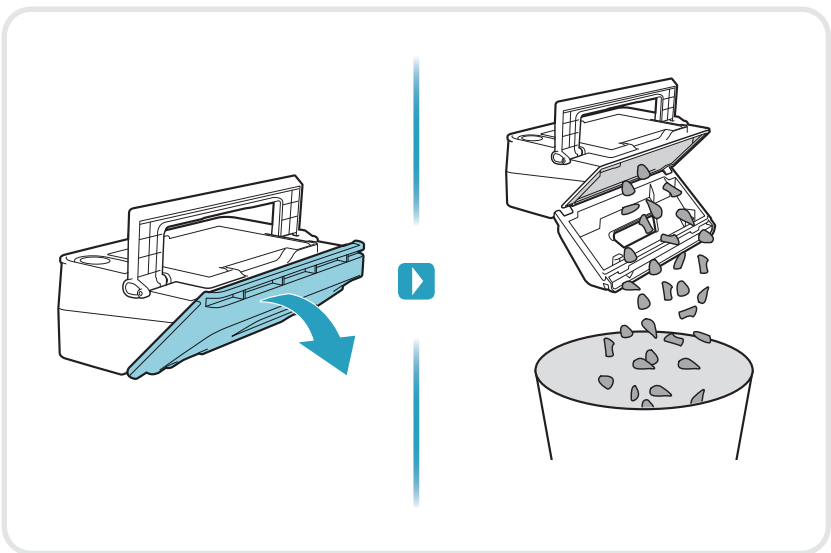


2. Open the dust bin by swinging it downwards.

Empty the dust container into a waste bin.

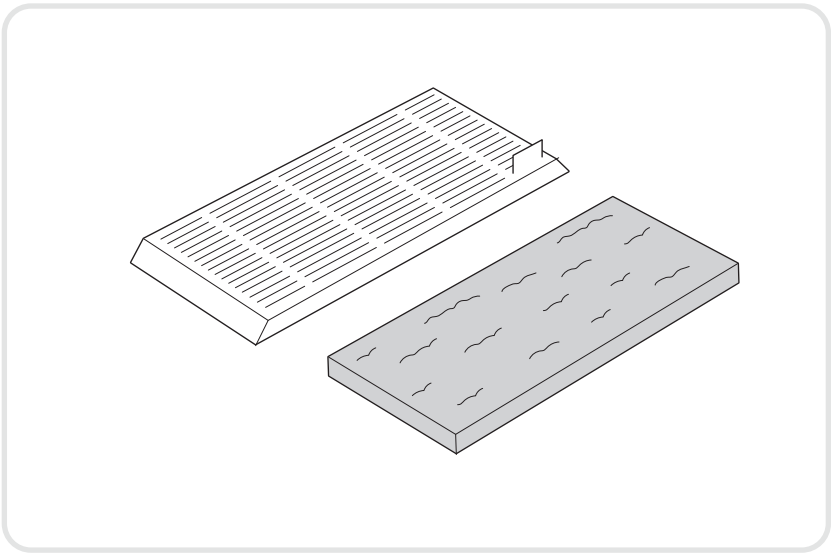
After emptying the container, close the lid and put it back in the robot.

Note: Empty the dust container regularly for better performance of the robot.

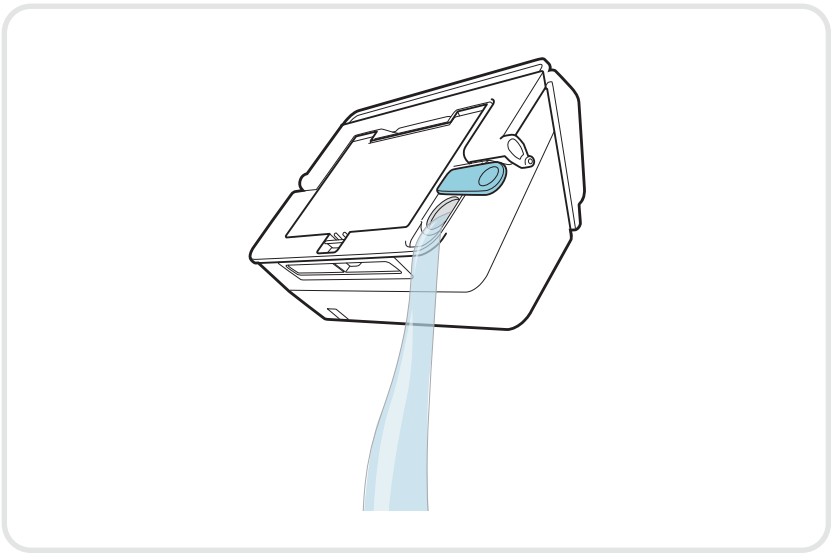


Clean the filter

1. For best performance, we recommend to clean the filter every month and to replace it every 6 months.



2. Empty the water tank, pull up the dust container lid.

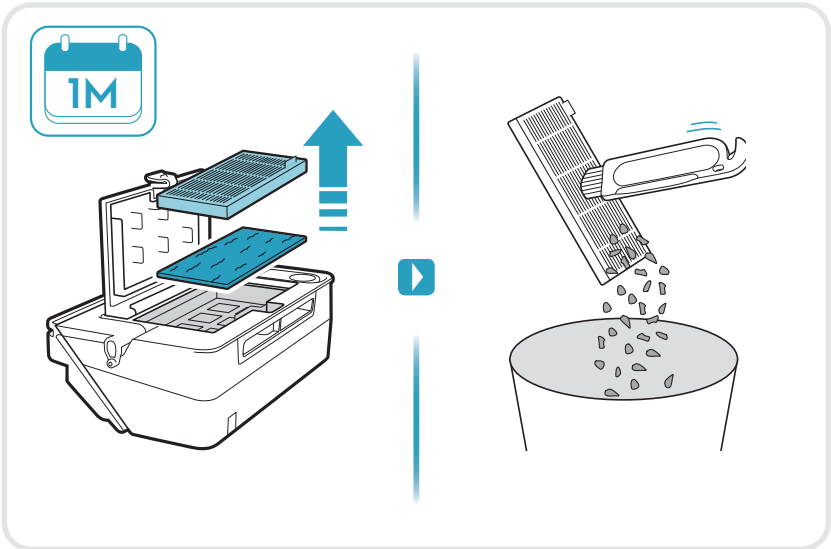


Emptying the Dust container, Replacing/Cleaning the Filter

Cleaning the Filter

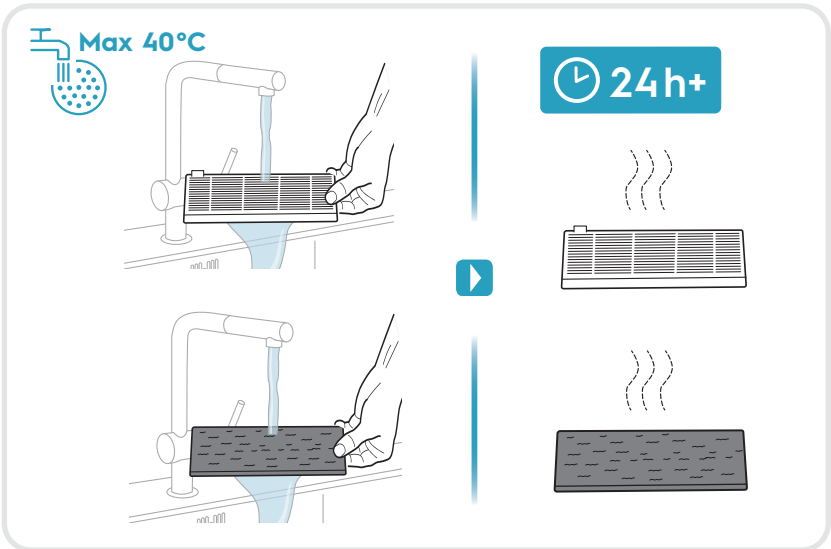
3. Remove the filter:

Open the lid by swinging it upwards.
Use the cleaning brush to brush the dust and small chips attached on the filter.



4. Rinse the filter with cold water.

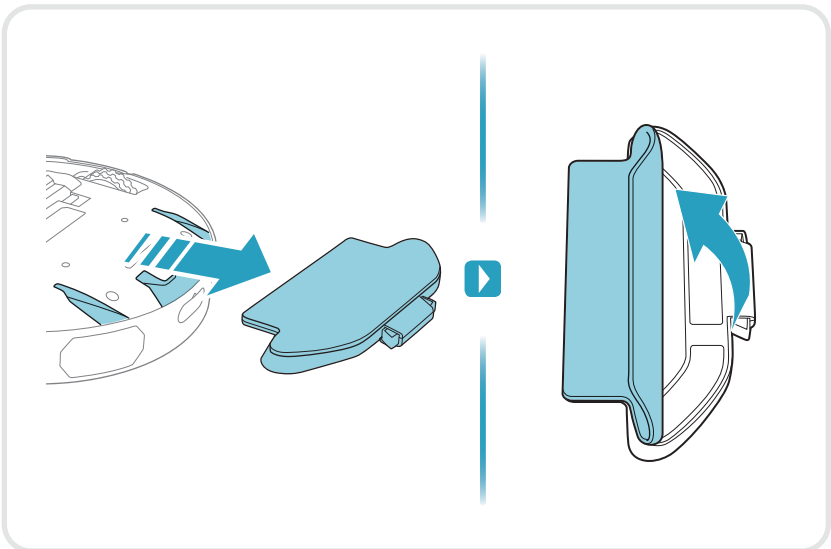
Tap the filter frame to remove water. Let dry for more than 24 hours before placing it back in the machine.



Cleaning the mopping pad

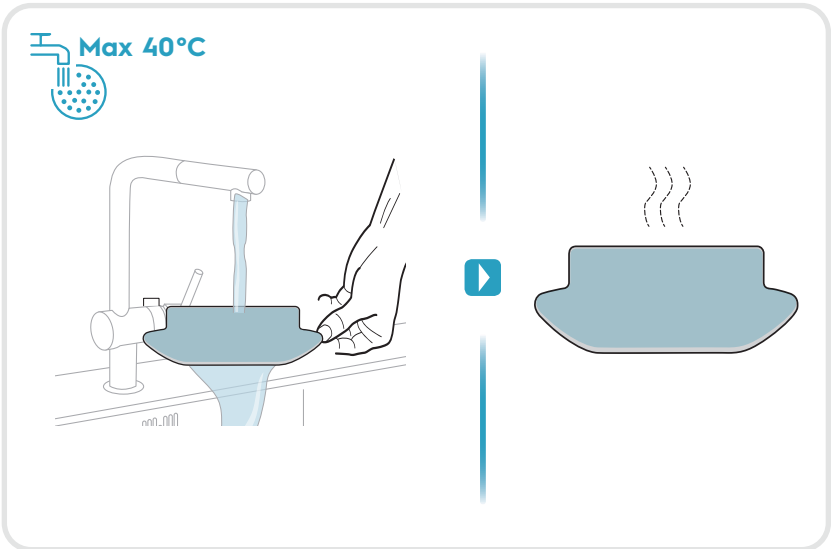
1. Remove the mopping cover:

Remove the mopping pad from the cover.



2. Rinse the mopping pad with cold water:

We recommend to clean the mopping pad every time after you have used it.
Please dry the mopping pad before using it next time.
You can also clean and dry the mopping pad with washing machine.

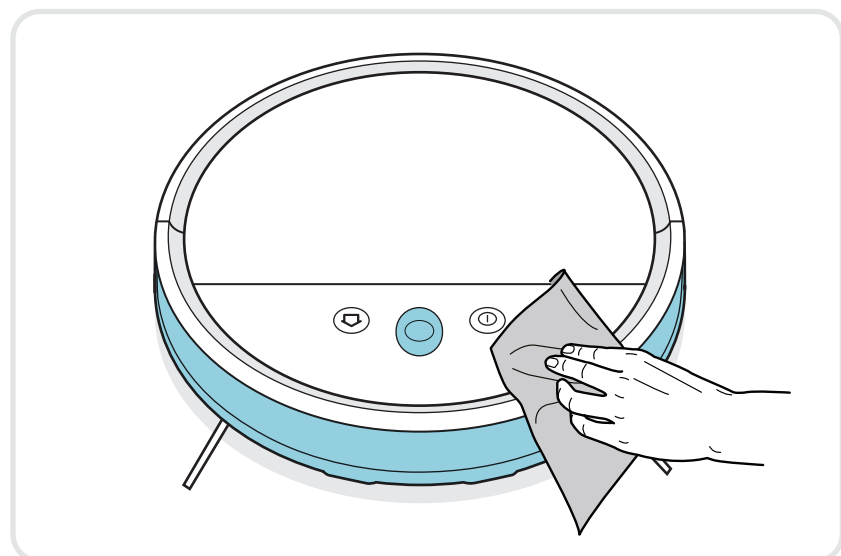


Maintenance

Cleaning the Camera

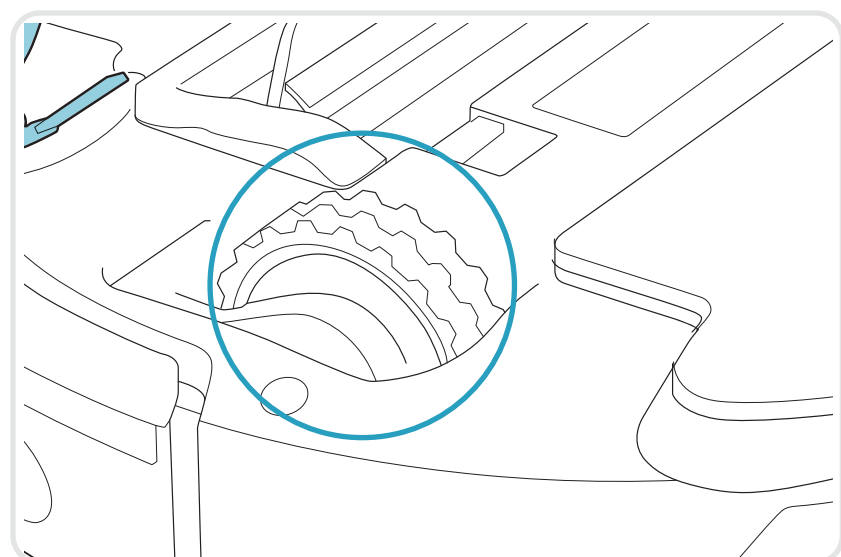
The camera works best if the windows are kept clean and free from scratches.

Clean from light dust by using a dry soft cloth. If it is heavily soiled you can use a mild detergent to clean it.

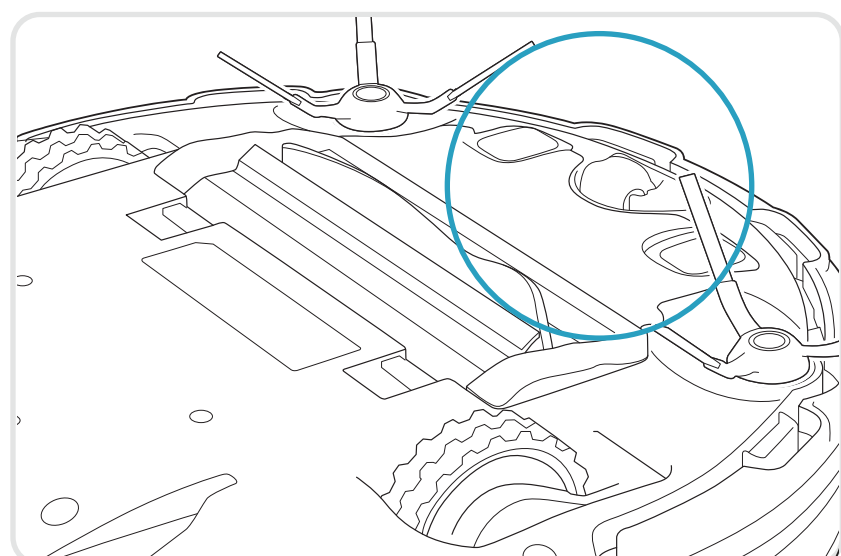


Cleaning the Wheels

1. Remove entangled hairs or such from the main wheels so that they can turn freely.

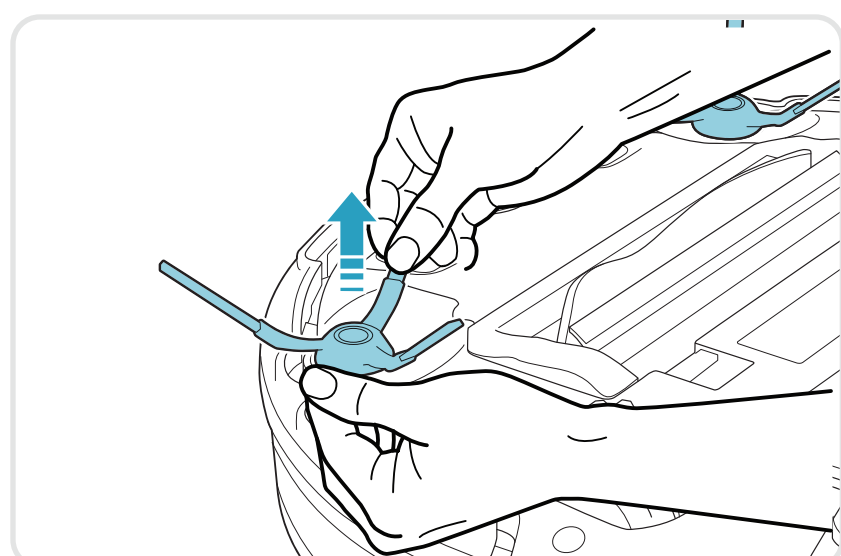


2. Should the front wheel get stuck, remove it carefully by using a small screwdriver and clean the wheel.



Cleaning the Side brushes

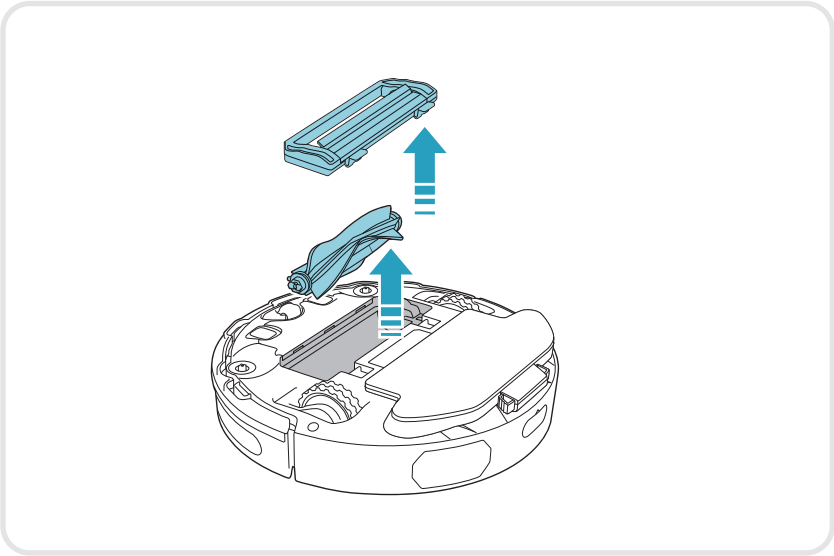
Pull the Side brushes to remove them. Clean the Side brushes. Reattach the Side brushes in the socket. Side brushes can be changed.



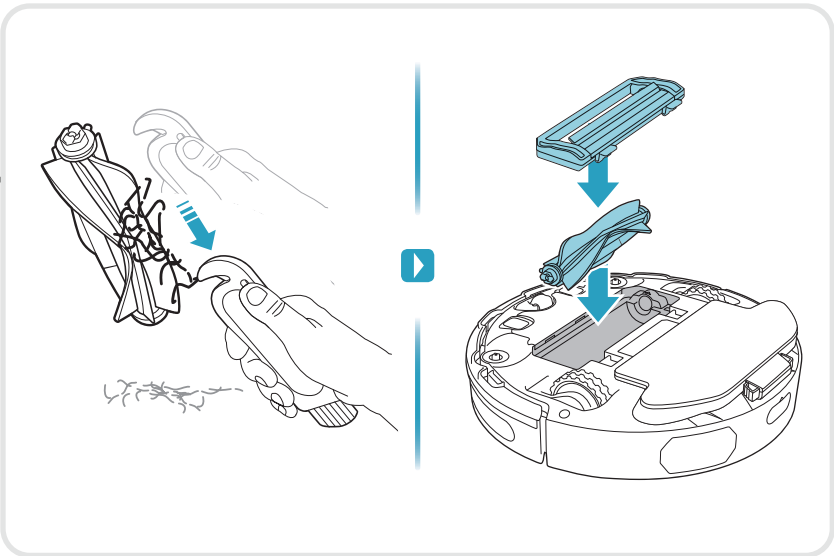
Maintenance

Cleaning the Brush roll

1. Press the two latches and slide the lid forward to remove the brush roll lid.

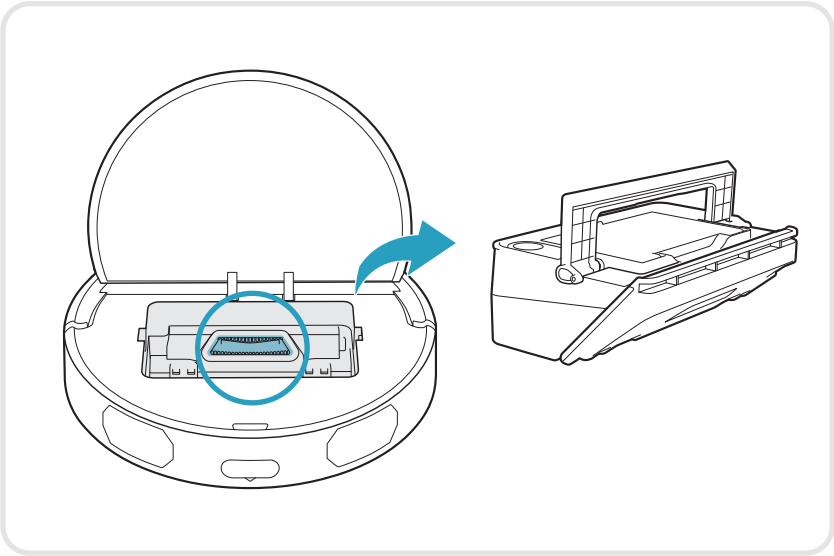


2. Pull out the Brush roll and clean the brush and bearings. Remove entangled threads by snipping them away with cleaning brush. Refit in reverse order. Brush roll can be replaced.



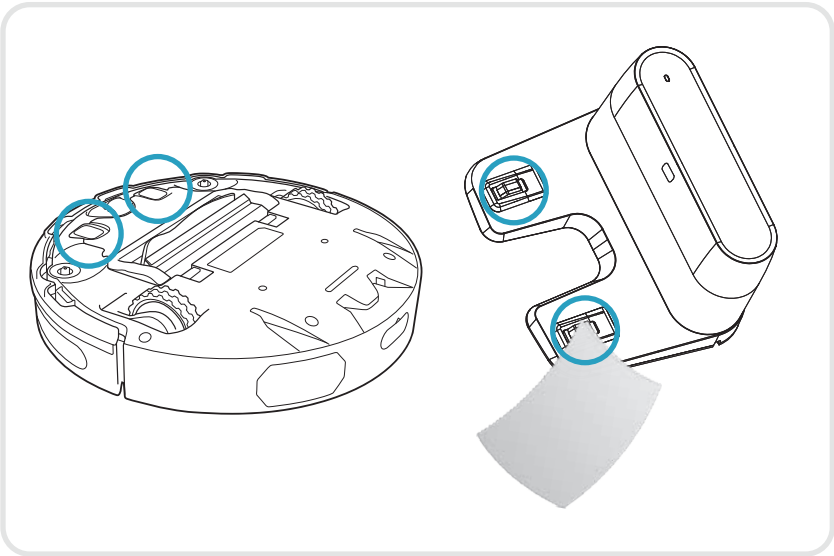
Cleaning the Air channel,

Remove the dust container. Remove clogged debris in the air channel. Put the dust container into place.



Cleaning the charging connectors

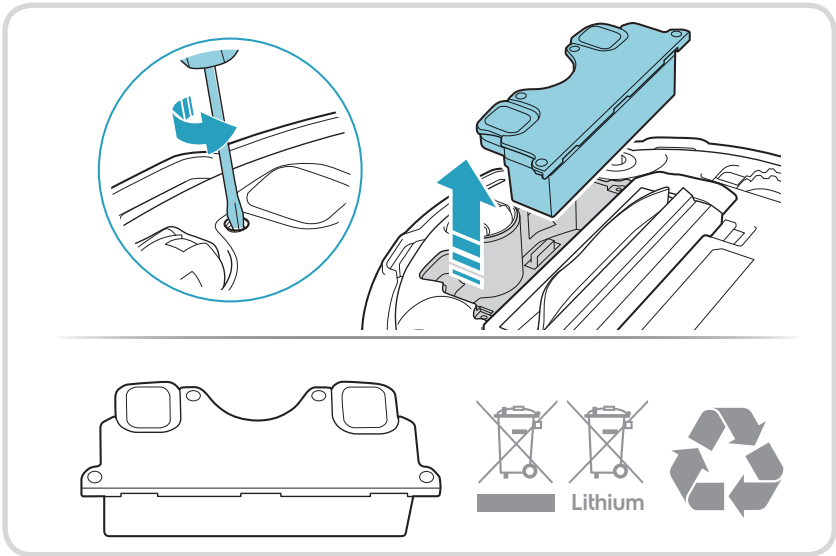
Use a dry soft cloth to regularly clean the charging connectors on the charging base and under the machine.



Changing the batteries

1. The battery is located on the bottom side of the robot. Use a screwdriver (PH2) to unscrew the battery box. Replace the battery and screw it.

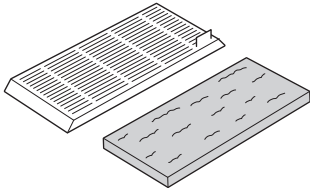
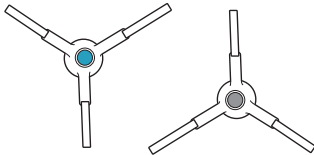


Use only original supplier batteries!



Consumables & Accessories

 www.electrolux.com/shop

 electrolux.com/shop

<div>2x</div> <div></div> <div>Filter Kit 2 (Wet) Ref : EFR3W PNC : 900923495</div>	<div>2x</div> <div></div> <div>Side Brushes Ref : ERSB4 PNC : 900923496</div>	<div>1x</div> <div></div> <div>Main Brush Ref : ERMB2 PNC : 900923497</div>	<div>2x</div> <div></div> <div>Mopping Pads Ref : EMR1 PNC : 900923499</div>
--	--	---	---

Safety precautions

This appliance can be used by children aged from 8 years and above and persons with reduced physical, sensory or mental capabilities or lack of experience and knowledge if they have been given supervision or instruction concerning use of the appliance in a safe way and understand the hazards involved.

The robot should only be used for normal vacuuming in a domestic/indoor environment.

Make sure the robot is stored in a dry place.

All service or repairs must be carried out by an authorized Electrolux service centre.

Remove the robot from the charger before cleaning or maintaining your robot.

Do not allow children to play with the appliance.

Packaging material, e.g. plastic or fabric bags should not be accessible to children to avoid suffocation.

The robot is designed for a specific voltage. Check that your supply voltage is the same as that stated on the rating plate on the charging adaptor.

Use only the original charging station and adaptor designed for the robot.

Never use the robot:

- In wet areas.
- Close to flammable gases, etc.
- When the product shows visible signs of damage.
- On sharp objects or fluids.
- On hot or cold ashes, lighted cigarette butts, etc.
- On fine dust, for instance from plaster, concrete, flour, hot or cold ashes.
- Do not leave the robot in direct sunlight.
- Avoid exposing the robot to strong heat.
- The battery pack within must not be dismantled, short circuited or placed against a metal surface. Use only the battery pack designed for the robot.
- Batteries must be removed from the appliance before it is disposed of.
- The appliance must not be plugged in when removing the battery.
- The battery is to be disposed of safely.
- Never use the robot without filter.
- Do not touch the brush roll while the cleaner is switched on and the brush roll is turning. Do not touch the wheels while the robot is operating.

Using the robot in a manner that conflicts with above recommendations may cause serious personal injury or damage to the product. Such injury or damage is not covered by the warranty or by Electrolux.

The warranty does not cover reduction in battery runtime due to battery age or use, as the life of the battery depends upon the length and number of times the robot is used.

Before cleaning, remove small and fragile objects such as clothing, curtain strings, papers and power cords from the floor. If the device passes over a power cord and pulls it, there is a risk that an object could be pulled off a table or shelf.

The robot is designed to not move any larger objects in its way. Objects such as chairs can therefore be left on the floor as the robot will clean around them.

Visit our website to:



Get usage advice, brochures,
trouble shooter, service information:
www.electrolux.com



Register your product for better service:
www.electrolux.com/productregistration



Buy Accessories and Consumables for your appliance:
www.electrolux.com/shop

Consumer information and sustainability policy

Recommended operation, charging and storage environment for Electrolux battery products

1. Operation, charging and storage conditions

This product is intended to be used in normal household environment and should not be exposed to abnormal temperature.

To protect the internal parts of product it should not be stored, charged or operated in:

- An ambient temperature below 10 °C or exceeding 30 °C.
- If the product is stored in temperature below 10 °C or exceeding 30 °C. Please wait a few hours so that the internal components of the products can cool down or warm up and dry before usage. Usage and storage outside temperature interval might harm the product or reduce lifetime.
- Below 20% or over 80% humidity levels (Non-Condensing)

Charge the product for minimum 24 hours:

- Before first use.
- Before storage for a longer time period. (Remove batteries from the robot before long time storage.)
- After storage for a longer time period.

2. Dew condensation warning

Dew condensation may form inside the product under the following conditions:




- The unit is moved from a cold to a warm place.
- Under conditions of very high humidity.
- After heating a cold room.

Please wait a few hours for the internal components of the products to warm up and dry before usage.

3. To preserve the battery life and performance:

- Always keep the robot charging when not in use.
- Charge it as soon as possible after the cleaning cycle. Waiting too long might affect the batteries.

Environmental concerns

-  This symbol on the product indicates that this product contains a built-in rechargeable battery which shall not be disposed with normal household waste.
-  This symbol on the product or on its packaging indicates that the product may not be treated as household waste.
-  To recycle your product, please take it to an official collection point or to an Electrolux service center that can remove and recycle the battery and electric parts in a safe and professional way. Follow your country’s rules for the separate collection of electrical products and rechargeable batteries.

Customer care and service

When contacting the Electrolux service center, ensure that you have following data available:

- Model number
- PNC number
- Serial number

The information can be found on the rating plate.

The software in the robot is partly based on free and open source software.
To access the source code of these components and to see the full copyright information and applicable license terms, please visit:
www.electrolux.com/rvc-supplementary

