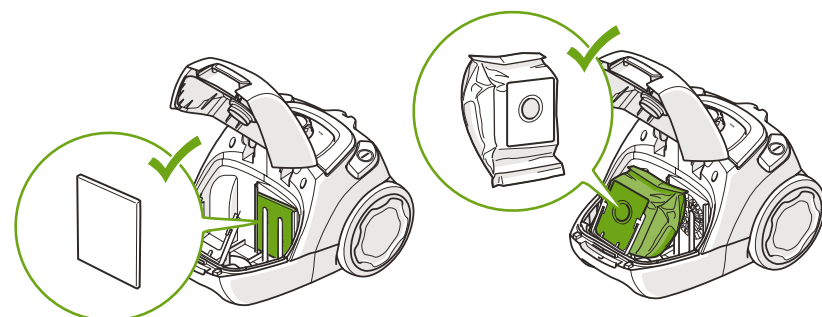
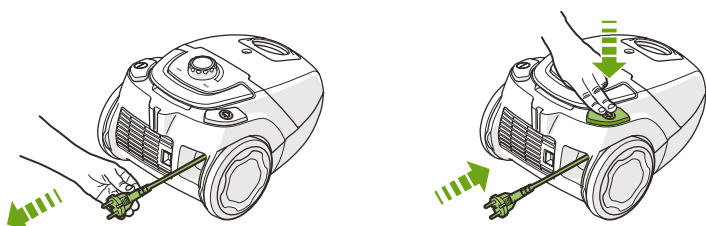


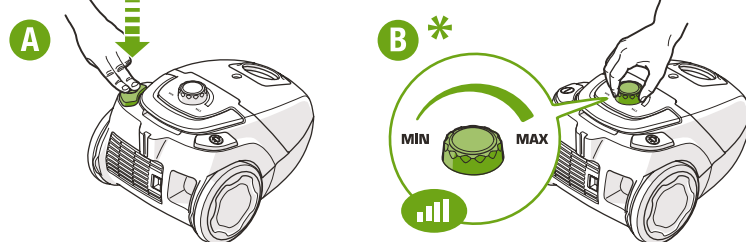
1



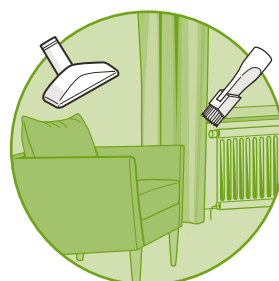
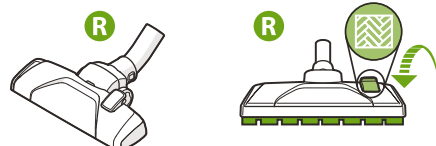
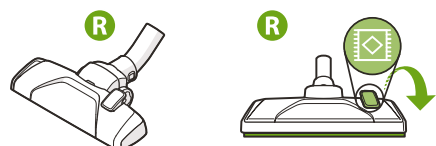
2



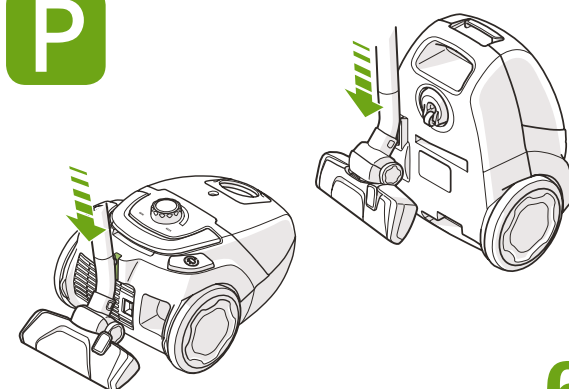
3



4

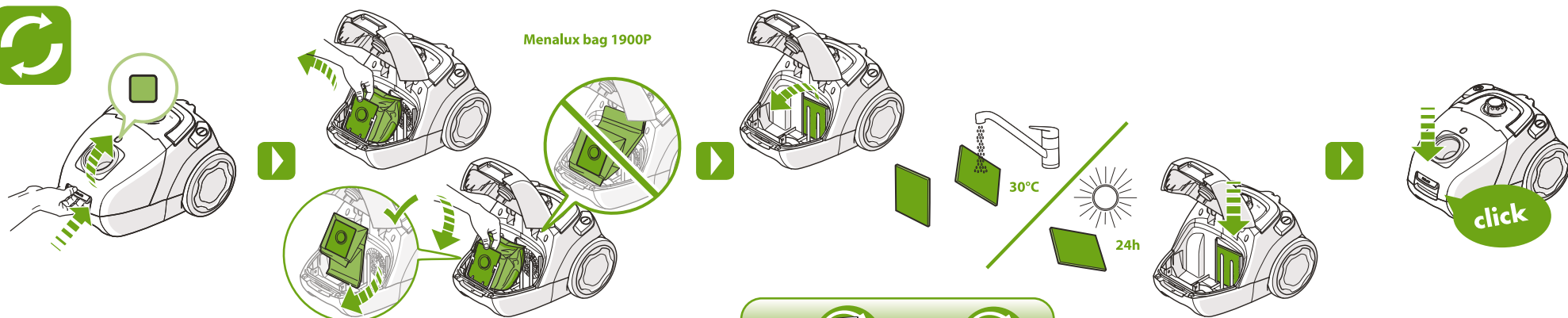


5



6

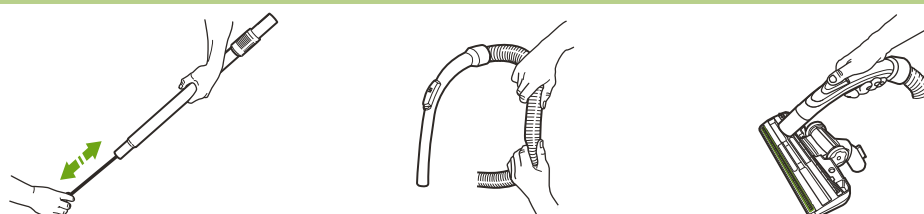
R Recommended nozzle



5x = 1x



7



8



IMPORTANT SAFETY INSTRUCTIONS & WARNING

READ ALL INSTRUCTIONS BEFORE USING (THIS APPLIANCE)

When using an electrical appliance, basic precautions should always be followed as listed below. Before connecting the cleaner to an electrical supply outlet, ensure that the voltage marked on the rating plate (on the underside of the cleaner) is correct for your electrical supply. If it does not comply, do not use the cleaner prior to contacting the manufacturer.

WARNING – To reduce the risk of fire, electric shock, or injury:

1. Do not leave vacuum cleaner when plugged in. Unplug from outlet when not in use and before servicing.
2. To reduce the risk of electric shock, do not use outdoors or on wet surfaces.
3. This appliance is not intended for use by persons (including children) with reduced physical, sensory or mental capabilities, or lack of experience and knowledge, unless they have been given supervision or instruction concerning use of the appliance by a person responsible for their safety. Children should be supervised to ensure that they do not play with the appliance.
4. Use only as described in this manual. Use only attachments recommended by the manufacturer.
5. Do not use with damaged cord or plug. If vacuum cleaner is not working as it should, has been dropped, damaged, left outdoors, or dropped in water, take it to a service centre before using.
6. Do not pull or carry on cord or use as a handle. Do not close door on cord, or pull around sharp edges or corners. Do not run vacuum cleaner over cord. Keep cord away from heated surfaces.
7. Do not unplug by pulling on the cord. To unplug, grasp the plug, not the cord.
8. Do not handle the plug or vacuum cleaner with wet hands.
9. Keep hair, loose clothing, fingers and all parts of body away from openings and moving parts.
10. Turn all controls off before unplugging.
11. Do not use to pick up flammable or combustible liquids, such as gasoline, or use in areas where they may be present.

12. Do not pick up anything that is burning or smoking, such as cigarettes, matches, or hot ashes.
13. Do not use without dust bag and/or filter in place.
14. Do not use extension cords or outlets with inadequate current carrying capacity.
15. We recommend you do not use your vacuum on carpet cleaning foams, sharp or heavy building materials or plaster dust. They could damage or clog the filters and cause failures to other key parts in your vacuum cleaner and render your warranty invalid.
16. Store your cleaner indoors in a cool, dry area.
17. Unplug electrical appliances before vacuuming them.
18. Please remove the plug from the socket outlet before cleaning or maintaining this appliance.

ELECTRICAL CABLE PRECAUTIONS

- If the supply cord is damaged, it must be replaced by the manufacturer, its service agent or similarly qualified person in order to avoid a hazard. Damage to the cleaner cable will not be covered by the warranty.
- Never pull or lift the vacuum cleaner by the cable.
- Disconnect the plug from the wall socket before cleaning or maintaining the vacuum cleaner.
- Regularly check that the cable is not damaged. Never use the vacuum cleaner if the cable is damaged. All service and repairs must be carried out by an authorised Electrolux service centre. Always keep the vacuum cleaner in a dry place.

SERVICE & REPAIR

It is dangerous to alter the specifications or modify the product in any way. Under no circumstances should you attempt to repair the cleaner yourself.

NEVER VACUUM

- In wet areas.
- Close to flammable gases, combustible substances, etc.
- Without a motor and an exhaust filter (this may damage the cleaner) and without the dust container. A safety device is fitted which prevents the cover to close without the filter. Do not attempt to force to close the cover.
- Sharp objects.
- Fluids (this can cause serious damage to the machine).
- Hot or cold cinders, lit cigarette butts, etc.
- Fine dust from plaster, concrete, or ash, for example. The above can cause serious damage to the motor – damage which is not covered by the warranty. Products in aerosol may be flammable. Do not spray these products on or near the vacuum cleaner.

DOUBLE INSULATION

Your vacuum cleaner is double insulated. This means that all external parts are electrically insulated from the mains. This is done by placing insulation barriers between the electrical and mechanical components, making it unnecessary for the cleaner to be earthed.

WARNING – On collection of proprietary carpet conditioning powder, it is recommended that the dust container is emptied and the cartridge filter is cleaned after each use. Some of the preparations contain substances which if left in the vacuum cleaner for extended periods, could cause damage. Many air fresheners, household deodorants, sprays and polishes contain highly inflammable gas propellants, because of this it is particularly important that these products are used strictly in accordance with the relevant manufacturers instructions. It is essential that none of the above products are sprayed directly into the vacuum cleaner or any of the filters, hose assembly or dust chamber.

CONSUMER INFORMATION

Electrolux declines all responsibility for all damages arising from any improper use of the appliance or in cases of tampering with the appliance. For more details of warranty and consumers’ contacts see the Warranty Booklet in the packaging.

TROUBLE SHOOTING AND CUSTOMER INFORMATION

You can perform your own troubleshooting at home based on the checklist given in this section. However, if the problem persists, please contact Electrolux

1300 366 366 (AUS)

PROBLEM	POSSIBLE CAUSES	CORRECTIONS
Vacuum cleaner does not start.	Plug is not properly connected to the socket.	Check the plug connection or try another socket.
	Thermal protector activated due to high temperature.	Press the On/Off button and wait 20-30 minutes for the motor to cool down.
Filter indicator stays on.	Dust bag is full.	Replace the dust bag.
	Filters are clogged.	Clean or replace filters.
Reduction of suction capacity.	Suction hose is blocked.	Clean the hose.
	Nozzle is blocked.	Clean the nozzle.
	Dust bag is full.	Replace the dust bag.
	Filters are clogged.	Clean or replace filters.
	Hose is damaged or broken.	Change the hose.
Over-heating.	Dust bag is full.	Replace the dust bag.
	Filters are clogged.	Clean or replace filters.

ELECTROLUX HOME PRODUCTS PTY LTD

ABN 51 004 762 341
163 O’Riordan Street, Mascot, NSW 2020, Australia
Customer Service : 1300 366 366

www.electrolux.com.au

*Due to the Volta policy of continual product development; specifications, colours and details of our products and those mentioned in this manual are subject to change without notice.

KEEP THIS FOR YOUR RECORDS

To be completed by the Purchaser

Model

Serial No

Date of Purchase

Retailers Name

Retailers Address

City

State

📎 Attach Your Purchase Receipt Here