

GOLDAIR

Operating Instructions

40CM Pedestal Fan With Remote



Item: GCPF150

General care and safety guide

Thank you for choosing this GOLDAIR Fan. This GOLDAIR appliance has been designed and manufactured to high standards of engineering and with proper use and care, as described in this leaflet, will give you years of useful service. Please read these instructions carefully and keep them for future reference.

ALWAYS

- ✓ Use only the voltage specified on the rating plate of the appliance.
- ✓ Keep all objects at least 1 Metre from the front, sides and rear of the appliance
- ✓ This appliance is intended for household use only and not for commercial or industrial use.
- ✓ Use this appliance only as described in this manual. Any other use is not recommended by the manufacturer and may cause fire, electric shock or injury.
- ✓ The common cause of overheating is deposits of dust or fluff in the appliance. Ensure these deposits are removed regularly by unplugging the appliance and vacuum cleaning the air vents and grills.
- ✓ Always unplug appliance when not in use.
- ✓ When the appliance has been unpacked, check if for transport damage and ensure all parts have been delivered. If parts are missing or the appliance has been damaged, contact the Goldair Customer Services Team.
- ✓ If your appliance does not work, or is not working properly, contact the place of purchase. Repair work on the appliance by unqualified persons can cause serious risk to the user.
- ✓ Ensure hands are dry before handling the plug or the Fan.
- ✓ Carry out regular checks of the supply cord to ensure no damage is evident.

ALWAYS

- ✓ Children should be supervised to ensure that they do not play with the appliance.
- ✓ Ensure that the cord is fully extended (not coiled) while in use.
- ✓ Avoid contact with the moving parts. Keep hands, hair, clothing, away from blade of the Fan during operation to reduce the risk of injury to person and/or damage to the Fan.
- ✓ Switch off and use handles provided when moving.

NEVER

- * Never Place appliance close to radiant heat source.
- * Never Operate in areas where petrol, paint or other flammable liquids are used or stored.
- * Never Use the appliance to dry clothes.
- * Never Insert or allow foreign objects to enter any ventilation or exhaust opening, as this may cause an electric shock, fire or damage to the appliance.
- * Never use abrasive cleaning products on this appliance. Clean with a damp cloth (not wet) rinsed in hot soapy water only. Always remove plug from the mains supply before cleaning.
- * Never connect the appliance to mains supply until completely assembled and adjusted.
- * Never Remove plug from power socket until the appliance has been switched off.
- * Never Remove plug from power socket by pulling cord – always grip plug.
- * Never Twist, kink or wrap the cord around the appliance, as this may cause the insulation to weaken and split. Always ensure that all cord has been removed from any cord storage area and is unrolled before use.

Continued Over Leaf

General care and safety guide

NEVER

* Never use this appliance in the immediate surrounds of a bath, a shower, or a swimming pool or other liquids. The appliance must not be immersed in any liquids.

* Due to the risk of injury, never use this appliance for any purpose other than its intended use. This appliance is intended for use in household and similar applications such as staff kitchen areas in shops, offices and other working environments; farm houses, by clients in hotels, motels and other residential type environments, bed and breakfast type environments

* Never use this appliance outdoors.

* The use of an extension cord, power board, or external timer is not recommended with this unit.

* Never operate the appliance with a damaged cord or plug, after it malfunctions, or if it has been damaged in any manner. Have the appliance checked and repaired by a qualified electrician if repair is necessary. If the supply cord is damaged, it must be replaced by the manufacturer, its service agent or similarly qualified persons in order to avoid a hazard.

* This appliance is not intended for use by persons (including children) with reduced physical, sensory or mental capabilities or lack of experience and knowledge, unless they are supervised or have been given instruction concerning the use of the Fan by a person responsible for their safety.

* Never touch blades while the machine is plugged in.

Cleaning

To avoid risk of electric shock, before cleaning, you **MUST ALWAYS** switch off and unplug the Fan before cleaning.

Use only a soft, damp cloth to gently wipe the Fan and dry well.

To access the fan blade , remove the front guard and securing screw.

DO NOT immerse the Fan in water and never allow water to enter the motor housing.

DO NOT use harsh chemicals to clean the Fan.

TECHNICAL SPECIFICATION

Model No: GCPF150

Power Supply: 220V-240V / 50Hz

Power: 50W

GOLDAIR

SUPPORT AND TECHNICAL ADVICE

PO Box 100707, NSMC, Auckland, New Zealand

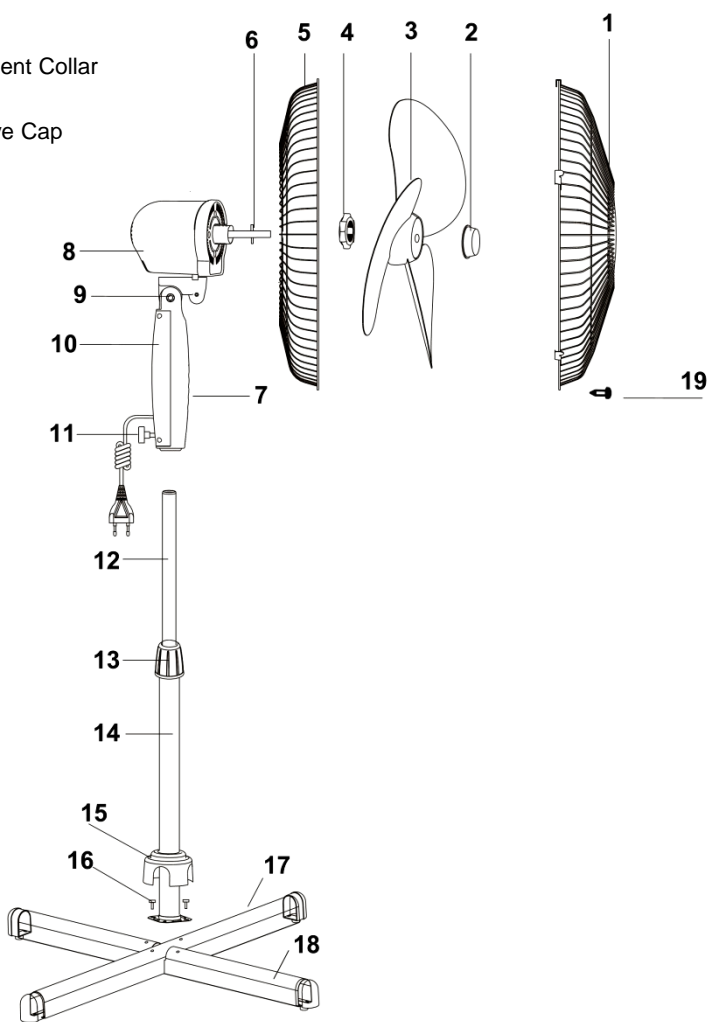
Monday – Friday 8am-5pm

Phone: 0800 232 633

Website: www.goldair.co.nz

Components

- 1.Front Grill
- 2.Blade Cap
- 3.Blade
- 4.Plastic Mounting Nut
- 5.Rear Grille
- 6.Motor Shaft
- 7.Oscillating Knob
- 8.Motor Housing
- 9.Neck Screw
- 10.Switch Box
- 11.Set Screw
- 12.Inner Tube
- 13.Height Adjustment Collar
- 14.Outer Tube
- 15.Base Decorative Cap
- 16.Screw
- 17.Cross Bar A
- 18.Cross Bar B
- 19.Screw



Assembling your Fan

Assembly

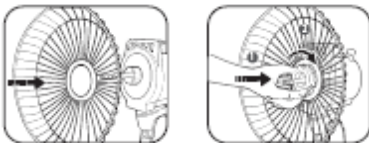
Firstly, loosen and remove the four screws from the bars. Then interlock cross bars A and B. Be sure to align the four holes in the bars with those on the flange of the Outer Tube. Secure the flange to the bars with the four screws.

Loosen and remove the Height Adjustment Collar from the top of the Inner Tube. Slide the Base Decorative Cap down over the assembly. Replace the Height Adjustment Collar on top of the Inner Tube. Pull the Inner Tube out from the Outer Tube to adjust the tube to the desired height and tighten the collar.

If necessary, slightly loosen the Set Screw by turning it anticlockwise. Slide the Switch Box down over the Inner Tube and tighten the Set Screw. Make sure the Set Screw is tightly secured.

Blade and grill

Unscrew the plastic mounting nut from the front of the motor housing by rotating it anticlockwise. Position the rear grill against the front of the motor housing with the handle at the top, ensure that the locating pegs on the motor housing are engaged correctly in the holes of the rear grill.



Tighten the Rear Grill Mounting Nut clockwise; do not over tighten.

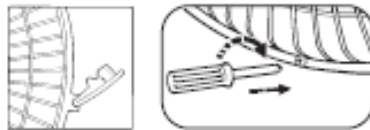
Push the fan blade onto the motor shaft, locating the slot at the back of the blade on the drive pin that passes through the motor shaft. Tighten the blade cap by turning it anticlockwise.



Position the front grill against the rear grill so that the holes in the rims that accept the small nut and bolt are in line. Insert the bolt through the holes and screw on the nut. Do not fully tighten at the stage.

Push the grill retaining clips into position ensuring that they engage correctly on the rim of the grill.

Fully tighten the small nut and bolt that passes through the rim of the grill.



Assembling your Fan

- 1.Power indicator
- 2.Swing indicator
- 3.Speed indicators (high-mid-low)
- 4.OFF button
- 5.TIMER button
- 6.ON/SPEED button
- 7.SWING button
- 8.Time indicators 0.5-1-2-4 hrs

Remote control

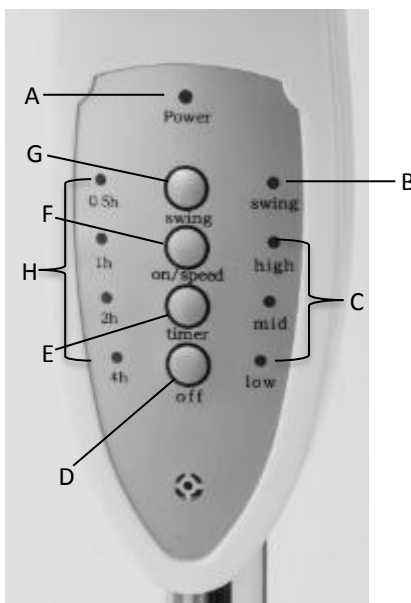
The remote requires a line-of-sight path to allow for the signal to be received by the unit. Position the unit so the receiver lens is visible from the remote control.

The symbols on the Remote correspond to the symbols on the main unit.



Remote control battery

Ensure batteries are inserted in the correct direction. Do not mix battery types. When replacing, ensure both batteries are changed simultaneously. 2xAAA size batteries are required.



Operating your Fan

Fan control switch

Place the Fan on a dry, level and sturdy surface.

Plug the power cord into the socket.

Switch on the appliance by pressing the ON/SPEED button (F) on the control panel. The fan starts to blow at low speed. The low speed indicator (C) lights up.

To change speed, press button (F) several times. Speed will change with each button stroke. The respective indicator (C) will light up.

Adjust tilt by turning neck screw (9) and tilting body to the desired wind direction (i.e. either upward or downward).

To activate the oscillation function, press the SWING button (G). The swing indicator (B) will light up and the fan starts to oscillate. To stop oscillation, press button (G) once again.

After having switched the unit on, press the TIMER button (E) and the fan will operate for as long as you choose: Press the timer button several times and the setting will change with every button stroke. The respective indicator lights (H) light up. When the set time has elapsed, the fan switches off automatically. The fan can set the timer function from 0.5-7.5 hours, as specified by the sum of the Time Indicators that are lit.

Switch fan off by pressing OFF button (D).

GOLDAIR

One year Warranty

Your Goldair product has been inspected and tested and is guaranteed subject to the following for a period to One year from the date of purchase against defects in workmanship and materials. During this period, such defects will be rectified by repair or replacement of the product purchased. Your product contains no user serviceable components and this Warranty becomes invalid if in our opinion the product has been misused, abused, incorrectly installed, tampered with, connected to an electrical supply not corresponding with the name plate specification, or subjected to power surges. The Warranty does not include any labour or other associated expense that may be involved in removal or installation of the product. Normal wear and tear is expressly excluded.

If your Goldair product fails to operate satisfactorily, please return it to the retailer from whom it was purchased. To obtain a repair or replacement product under this Warranty, you will need to produce satisfactory evidence of date of purchase. The completed Warranty and purchase receipt must be presented with the product. The Warranty should be filled out at the time of purchase. It is in your interest to make sure this is done.

If the product is to be replaced (cannot be repaired) then that replacement will be of the same or similar product or accessory excluding packaging, instruction card etc. Where a replacement product is supplied, this shall be guaranteed for the balance of the original Warranty period.

Any model that is no longer available will be replaced by a model of a value and with such features as we consider appropriate in the circumstances. Goldair Ltd is not responsible for freight forwarding charges, losses or damage in transit.

If service is required after the Warranty period has expired, the product should be returned to a qualified electrical technician. Service outside of the Warranty period will be at your cost.

Consumers Guarantee Act (1993).

In accordance with the above act consumers are advised that: The manufacturer does not undertake that repair facilities and parts are necessarily available for this product.

If any of the provisions of the foregoing are contrary to any relevant legislation, then that provision shall be deemed to be excluded from the Warranty and the rest of the provisions will continue to apply.

IMPORTANT: Please retain this Warranty card

Name Purchased from

Address Date of purchase

..... Name of product

Suburb Model no