

Sunbeam

**POWER STEAM
HANDHELD GARMENT
STEAMER**

SG1000

User Guide



Contents

Sunbeam's Safety Precautions	3
Learning About Your Sunbeam® Power Steam Fabric Steamer	4
About Your Features And Accesories Features	5
Accessories	5
Operating Instructions	6
Steaming Tips	8
Care And Cleaning	9
Troubleshooting	10

Before First Use

- Unpack your Steamer; remove and peel off any labels adhered to the unit.
- Remove and save instruction manual.
- Wipe outside of the unit with a damp cloth or sponge to remove any dust. Dry thoroughly.
- Keep unit on a flat, leveled surface.
- When using your Steamer for the first time, you may notice a small amount of smoke and a slight odor. This is normal when heating the appliance for the first time and there is no reason for concern.

Sunbeam's Safety Precautions

Sunbeam is very safety conscious when designing and manufacturing consumer products, but it is essential that the product user also exercise care when using an electrical appliance. Listed below are precautions which are essential for the safe use of an electrical appliance:

- Read All Instructions Before Use.
- Use appliance only for its intended use.
- To reduce the risk of electric shock, do not immerse the appliance in water or other liquids.
- Always turn the appliance to "Off" before plugging or unplugging the appliance from the electrical outlet. Never yank cord to disconnect from outlet; instead, grasp plug and pull to disconnect.
- Do not allow cord to touch hot surfaces. Let appliance cool completely before putting away. Loop cord loosely around appliance when storing.
- Always disconnect appliance from electrical outlet when filling with water or emptying, and when not in use.
- Do not operate appliance with a damaged cord, or if the appliance has been dropped or damaged. To reduce the risk of electric shock, do not disassemble or attempt to repair the appliance, take it to a qualified service center for examination and repair. Incorrect reassembly or repair could cause a risk of fire, electric shock, or injury to persons when the appliance is used.
- Close supervision is necessary for any appliance being used by or near children. Do not leave appliance unattended while connected.
- Burns could occur from touching hot metal parts, hot water, or steam. Use care when you turn a steam appliance upside down – there may be hot water in the reservoir.
- To reduce the risk of contact with hot water emitting from steam vents, check appliance before each use by holding it away from body and operating steam button.
- To reduce the likelihood of circuit overload, do not operate another high wattage appliance on the same circuit.
- Never steam clothes while someone is wearing.
- If an extension cord is absolutely necessary, a 15 ampere rated cord should be used. Cords rated for less amperage may overheat. Care should be taken to arrange the cord so that the cord cannot be pulled or tripped over.
- When filling the water tank, watch for water that can drip onto the floor and cause you to slip and fall. Do not place an appliance on or near a hot gas flame, electric element or on a heated oven.
- Care should be taken to arrange the cord so that it cannot be pulled or tripped over. Always make sure you can move freely without getting tangled with the cord. For additional protection, use a residual current device (RCD) with a tripping current not exceeding 30mA in the electrical circuit supplying power to your appliances.
- Appliance may cause personal injury or be damaged if dropped.
- The use of attachments not recommended or sold by the appliance manufacturer may cause injuries or void your warranty.
- To avoid personal injury and damage to the appliance, only add water to the water tank. NEVER add cleaning solutions, perfumes, oils or any other chemical additives.
- This appliance is not intended for use by persons (including children) with reduced physical, sensory or mental capabilities, or lack of experience and knowledge, unless they have been given supervision or instruction concerning use of the appliance by a person Responsible for their safety.
- To reduce the risk of electrical shock, this appliance has a polarized plug (one blade is wider than the other). This plug fits a polarized outlet only one way; if the plug does not fit fully into the outlet, reverse the plug. If it still does not fit, contact a qualified electrician. Do not attempt to defeat this safety feature.

Thank you for purchasing the Sunbeam® Power Steam Handheld Garment Steamer. With powerful continuous steam technology and easy-to-use accessories, this Steamer will bring out the best in garments, linens, drapes and more--quickly and efficiently! .

If you have any concerns regarding the performance and use of your appliance, please visit www.sunbeam.com.au or contact the Sunbeam Consumer Service Line.

Ensure the above safety precautions are understood.

Learning About Your Sunbeam® Power Steam Handheld Garment Steamer



- | | |
|---|----------------------------|
| 1. Heated press bar | 7. Steam Handle |
| 2. Steam exit | 8. Fabric brush |
| 3. Steam Trigger, with locking mechanism | 9. Lint pad/steam diffuser |
| 4. Removable water tank with water inlet tube | 10. Creaser |
| 5. Red/green power indicator light | |
| 6. Off, Low/High slide switch | |

Accessories Attachments



About Your Features And Accesories Features

Heated press bar – Works like an iron soleplate to press wrinkles out.

Wide steam exit – Provides wide coverage of steam for your garments and fabrics.

Steam trigger with locking mechanism– Integrated switch gives you the option to steam on demand, or to set the switch in the lock-down position for continuous steam.

Removable water tank with water inlet tube – Easily twists off for quick refills. A water inlet tube inside the water transmits the water from the tank to steamer head. A loud vibrating noise indicates that the water is low in the water tank and time to refill.

Red power indicator light – Lights up when unit is plugged in to an electrical outlet and set to High or Low setting.

Green ready indicator light – Lights up to indicate the unit is ready for use.

Off & Low/High slide switch – Turns unit off and provides two steam settings for use on a variety of fabrics.

2.5 metres cord – Gives you the freedom to move around without getting in the way.

Accessories



Steam Handle – Lets all the hot steam get the best results for you while you comfortably hold the steamer.



Fabric Brush – Use for general steaming to loosen the fibers of your thick and heavy fabrics for better steam penetration.



Lint Pad & Steam Diffuser – Use to pick up lint, pet hair, dust and more. The cushion also helps diffuse steam for a smooth steaming to protect your delicate garments.



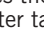
Creaser – Use to get iron-like creases on your shirts and pants.

Operating Instructions

FILLING WATER TANK

Warning: To avoid personal injury and damage to the unit, only add water to the water tank. NEVER add cleaning solutions, perfumes, oils or any other chemical additives.

Note: Your Steamer is designed to be used with tap water. However, if you have hard water, we recommend using distilled water for better results.

1. Place Steamer on a flat surface.
2. Hold the water tank with one hand while turning the steamer handle counterclockwise with other hand, until the arrow on the handle reaches the unlock symbol () on the water tank. Lift the handle off the water tank. Set the Steamer aside (Figure 1).

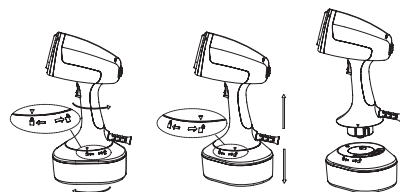


Figure 1

3. Take the water tank to a sink. Pull the rubberized water-fill cover to open and pour tap water from the tap into the water-fill opening until it reaches the Max water level in water tank (Figure 2). If water spills outside of the tank, or within the center water tank cavity, wipe it dry with a paper towel or cloth.

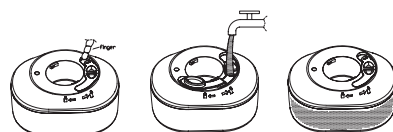



Figure 2

Warning: When filling the water tank, watch for water that can drip onto the floor and cause you to slip and fall.

Tip: It is not necessary to have a full tank of water for the Steamer to generate steam. For best results, just make sure the water tank is at least half full.

4. Close the water-fill cover, insert the handle into the water tank and turn clockwise until the arrow on the handle aligns with the lock symbol () on the tank. Pull on the handle to ensure it is fully locked in position.

Note: If you need to add water while steaming, unplug the steamer, wait until it cools and follow above steps. If a loud vibrating noise is heard, then the water level is low and needs to be refilled.

ATTACHING AND REMOVING ACCESSORIES

- **To attach:** Grasp both sides of the accessory and insert the heated press bar opening at the top of the accessory, behind the small tab above the heated press bar then gently press accessory onto steamer head until it snaps into place.
- **To remove:** Grip accessory handle and gently pull toward you to separate from the steam head (Figure 3).



Figure 3

Operating Instructions (continued)

USING YOUR STEAMER VERTICALLY

You can use your Steamer in the vertical position to press with steam hanging garments and drapes.

Caution: Heated press bar gets hot. Do not touch!

1. With the water tank filled, attach desired accessory to use on your garment (refer to ATTACHING AND REMOVING ACCESSORIES).
2. Hang your garment to be steamed on a clean, rust-free hanger.
3. Plug unit into a standard electrical outlet.

Warning: Care should be taken to arrange the cord so that it cannot be pulled or tripped over. Always make sure you can move freely without getting tangled with the cord.

4. Slide the switch to Low or High. The red power indicator light illuminates and will cycle on and off as the temperature is maintained, and in just approximately 45 seconds, the green ready light will also illuminate. The green light may cycle off, and the pump will stop if the temperature is too low to generate steam.

Caution: Burns could occur from touching hot metal parts, hot water, or steam. Use care when you turn a steam appliance upside down – there may be hot water in the reservoir.

5. You are now ready to start steaming!
6. Hold your Steamer by the handle in vertical position with the head pointing toward the fabric and away from you and your body.

Warning: Steam is hot. Always point steamer exit away from yourself, other persons, pets, plants and walls. Never steam clothes while they are being worn.

7. With your free hand, pull the fabric tight and press the trigger switch as you move the Steamer over the fabric.

Tip: If using the Creaser accessory,

press the lever to open it and just run the edge of your fabric through it to create an iron-like crease.

8. You can use the trigger two ways:
 - a. Press the switch to generate steam and release it to pause the steam. OR
 - b. To get continuous steam, you can press the trigger switch and move it down to the lock-down position.
9. Touch the fabric lightly with the heated press bar, moving it in a downward motion, beginning at the top of the garment and moving downward.
- Caution:** The heated press bar gets hot, do not touch.
10. Repeat this step until fabric is wrinkle free.

Tip: For more difficult wrinkles, try steaming from the underside of the fabric.
11. When finished, move trigger switch up to release it from the lock down position and slide switch to Off.
12. Place Steamer on a flat surface and unplug from electrical outlet.
13. Wait until Steamer has cooled and empty water tank.

Note: Always unplug the Steamer when not in use.

STEAMING HORIZONTALLY

You can also use your Steamer as an iron to refresh sheets, pillows, mattress, sofas and more.

1. After the water tank is filled, make sure there is no residual water inside the center water tank cavity. Attach the water tank to the steamer. Attach the desired accessory to the steamer and follow steps 3 and 4 under USING YOUR STEAMER VERTICALLY.

2. Once the Steamer has reached set temperature, press trigger switch and in a horizontal position, move the steamer continuously over the fabric being steamed.

Caution: The heated press bar gets hot, do not touch.

3. Once you finish, slide switch to Off and unplug unit. Wait for unit to cool completely before emptying the water tank or removing accessory.

Steaming Tips

- Improper use of the Steamer can cause property damage due to the steam. Always read the instructions in this manual before using your Steamer.
- Do not operate the Steamer with an empty water tank. To add water during operation, turn steamer off, wait for it to cool down then remove water tank and refill.
- Always read the fabric care labels to help determine fabric type to be steamed. If unsure of fabric's fiber, test a small hidden area, such as an inside seam or hem, before steaming.
- For more difficult wrinkles, try steaming from the underside of the fabric.
- When steaming, touching fabric lightly with the steam nozzle can help in wrinkle removal. It is important to make contact with the garment and/or fabric.
- Heavier fabrics require more steam.
- Only use water in the unit. Do not add cleaning solutions, scented perfumes, oils or any other chemicals to the water that can cause damage to the appliance.
- Do not use steam against wall or doors.
- When hanging garment on a door while steaming, be careful not to damage the door with steam.
- After use, empty water tank by turning it upside down to ensure all water empties out and avoid leaks.
- When steaming, move the steamer continuously over the item being pressed. Do not keep steamer over an area for any period of time to avoid damage to the fabric.

Care And Cleaning

CLEANING

1. Make sure unit is off, unplugged and allow it to cool completely before cleaning.
2. If there is water in the water tank, remove the tank and turn it upside down to ensure all the water empties out.
3. Wipe exterior surfaces with a soft, damp cloth. Dry thoroughly.

Warning: Never immerse steamer, cord or plug in water or any other liquid.

- Do not use abrasive cleaners or scouring pads that can scratch the surface.
- Do not place in the dishwasher.

CLEANING WITH VINEGAR AND WATER

It is recommended to clean your Steamer every two months to reduce mineral buildup that can affect the performance of your unit.

1. Turn off the unit and let it cool completely.
2. Remove water tank and make sure it is empty.
3. Fill water tank with a solution of 50% white vinegar and 50% water up to the max level.
4. Plug unit into electrical outlet and press trigger to run a full steaming cycle.
5. Once steaming is finished, fill with clean water and repeat process until the vinegar odor is eliminated.

STORAGE

Fold the cord in loops and store the unit in upright position, in a clean dry place with a flat, sturdy surface. Make sure the water tank is empty. If not, remove it and turn it upside down to ensure all the water empties out and avoid leaks.

Troubleshooting

Problem	Possible Cause	Solution
The steamer does not produce any steam.	The steamer has not heated up sufficiently.	Let the steamer heat up for about 45 seconds before using it.
	You pressed the trigger and then released it.	Press the steam trigger fully and keep it pressed or move it to the lock down position for continuous steam.
	The water level in the water tank is too low.	Unplug the steamer, let it cool completely and refill the water tank.
	The steamer is not plugged in.	Make sure the steamer is plugged into an electrical outlet.
	Electrical outlet is not working.	Plug into another electrical outlet.
	The steamer is not turned on.	Move the slide switch to Low or High setting.
The steamer makes a rattling noise and vibrates.	The water pump inside the unit detects the water level is low.	Unplug the unit, let it cool completely and refill water tank.
The steamer leaves water drops on the garment.	The accessory attachment being used may have condensation.	Let the appliance cool completely, remove attachment and wipe dry.
The steamer is making a buzzing noise while steaming.	The water pump is running.	This noise is normal.

**2
Year
Replacement
Guarantee**

This Sunbeam product is covered by a 2 year replacement or repair warranty, which is in addition to your rights under the Australian Consumer Law (if your product was purchased in Australia) or New Zealand Consumer Guarantees Act (if your product was purchased in New Zealand).

Upon receipt of your claim, Sunbeam will seek to resolve your difficulties or, if the product is defective, advise you on how to obtain a replacement or refund.

To assist us in managing warranty claims, we recommend you register your product as soon as practicable after purchase by creating a MySunbeam account on our website and uploading a copy of your original receipt.

In order to make a claim under our warranty, you must have the original proof of purchase documentation for the product and present it when requested (if not already uploaded to our website).

Should your product develop any defect within 2 years of purchase because of faulty materials or workmanship, we will replace or repair it, at our discretion, free of charge. A product presented for repair may be replaced by a refurbished product of the same type rather than being repaired. Refurbished parts may be used to repair the product.

Our replacement or repair warranty only applies where a defect arises as a result of faulty material or workmanship during the warranty period. Your warranty does not cover misuse or negligent handling (including damage caused by failing to use the product in accordance with this instruction booklet), accidental damage, or normal wear and tear.

Your warranty does not:

- cover freight or any other costs incurred in making a claim, consumable items, accessories that by their nature and limited lifespan require periodic renewal (such as filters and seals) or any consequential loss or damage; or
- cover damage caused by:
 - power surges, power dips, voltage supply problems, or use of the product on incorrect voltage;

- servicing or modification of the product other than by Sunbeam or an authorised Sunbeam service centre;
- use of the product with other accessories, attachments, product supplies, parts or devices that do not conform to Sunbeam specifications; or
- exposure of the product to abnormally corrosive conditions; or

- extend beyond 3 months if the product is used in commercial, industrial, educational or rental applications.

The benefits given to you by our warranty are in addition to other rights and remedies under law in relation to the product.

In Australia our goods come with guarantees that cannot be excluded under the Australian Consumer Law. You are entitled to a replacement or refund for a major failure and for compensation for any other foreseeable loss or damage. You are also entitled to have the goods repaired or replaced if the goods fail to be of acceptable quality and the failure does not amount to a major failure.

Our goods also come with guarantees that cannot be excluded under the New Zealand Consumer Guarantees Act.

If your warranty claim is not accepted, we will inform you and if requested to do so by you, repair the product provided you pay the usual charges for such repair. You will also be responsible for all freight and other costs.

Should your product require repair or service after the warranty period, contact your nearest Sunbeam service centre. For a complete list of Sunbeam's service centres, visit our website or call our customer service line for advice on 1300 881 861 in Australia, or 0800 786 232 in New Zealand.

Should you experience any difficulties with your product during the warranty period, please contact our customer service line for advice on 1300 881 861 in Australia, or 0800 786 232 in New Zealand.

Australia

www.sunbeam.com.au
1300 881 861
Units 5 & 6,
13 Lord Street,
Botany NSW 2019
Australia

New Zealand

www.sunbeam.co.nz
0800 786 232
Level 6, Building 5,
Central Park,
660-670 Great South Road,
Greenlane, Auckland
New Zealand

Need help with your appliance?

Contact our customer service team or visit our website for information and tips on getting the most from your appliance.

Australia	visit	www.sunbeam.com.au
	phone	1300 881 861
	mail	Units 5 & 6, 13 Lord Street, Botany NSW 2019 Australia.

New Zealand	visit	www.sunbeam.co.nz
	phone	0800 786 232
	mail	Level 6, Building 5, Central Park, 660-670 Great South Road, Greenlane, Auckland.

Sunbeam Corporation Limited | ABN 45 000 006 771
Sunbeam Corporation is a division of Newell Brands.
Sunbeam is a registered trademark.
Made in China to Sunbeam's specification.
Due to minor changes in design or otherwise,
the product you buy may differ slightly from the one shown here.
Approved by the appropriate electrical regulatory authorities.
©Copyright Sunbeam 2019.