

## ILO60DCX

## 60cm built-in multifunction electric oven

### ILO60DCX BUILT-IN ELECTRIC OVEN

#### FEATURES

- tangential fan cooling
- Time, 24h setting
- Touch control digital timer
- Accurate digital thermostat control: 0°C-250°C
- S-MOVE Soft close hinges
- PANA-view glass door with full visibility into the cooking cavity from the outside
- Inner door with 'American' Style robust commercial design

#### FINISH

- ANTI-fingerprint AS430 stainless steel

#### SAFETY

- Cool touch triple glazed glass door

#### FUNCTIONS

- 9 functions — pizza, fan forced, fan grill, static grill, half static grill, bottom element, fan assisted, convection, light

#### CLEANING

- ULTRA-Clean smooth grey cavity
- easy-clean removable inner glass & door

#### CAPACITY & INTERIOR

- 65 litre oven capacity
- 5 cooking levels
- Dark / black tinted glass on door exterior

#### ACCESSORIES

- 1 x oven rack and 1 x grill pan & grill insert

#### TECHNICAL INFORMATION

- 3.5kW/hr total electrical consumption
- 15 amp electrical connection, plug & lead supplied
- Size: 594W x 594H x 535D + 21mm fascia

#### COLOUR PALETTE

- Available in Stainless Steel



COOL TOUCH



MADE IN ITALY



60CM WIDE



9 MULTI-FUNCTION MODES



COOKING LEVELS



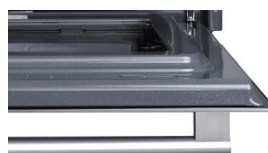
24 MONTH WARRANTY



S-MOVE DOOR



DIGITAL DISPLAY



New style inner door



S-move soft & gentle closing door hinges

EAN 9341584037565

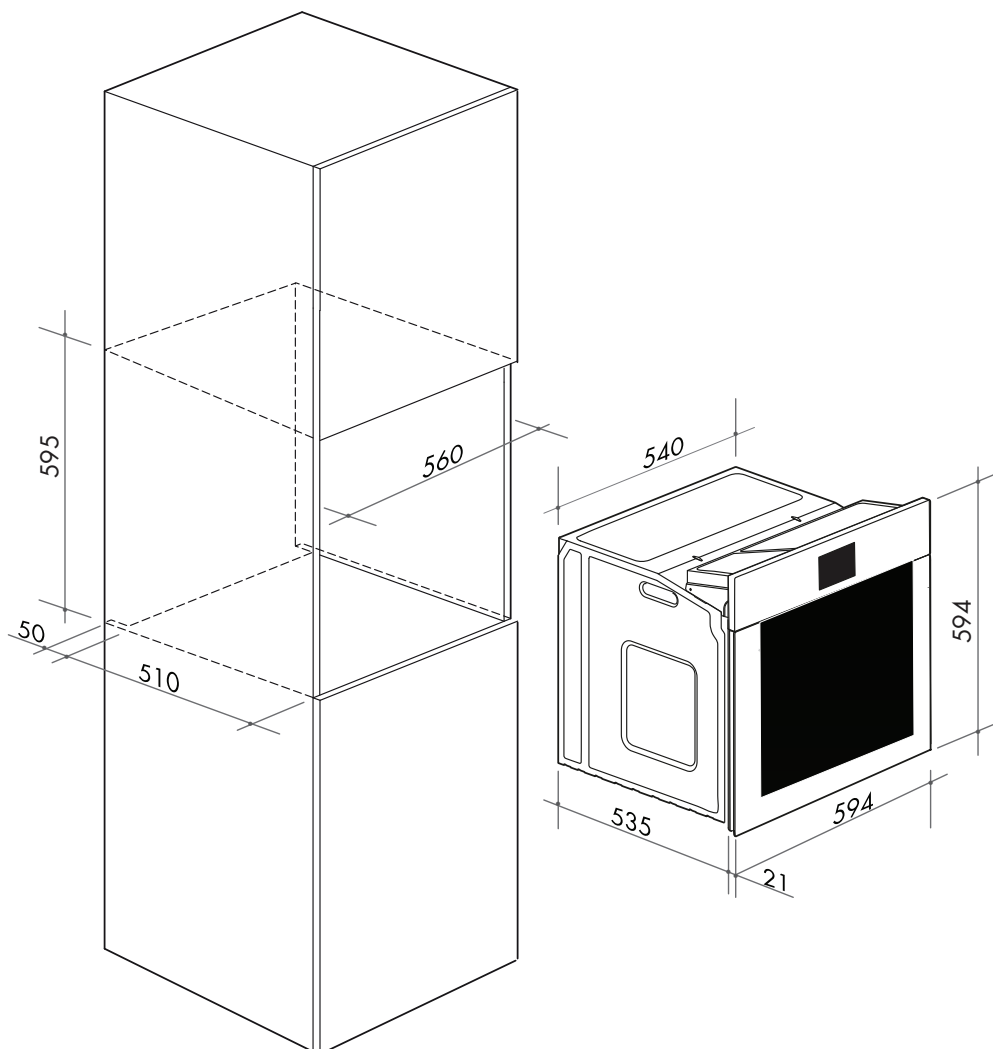
#### DISCLAIMER

Eurolinx Pty Ltd, trading as ILVE Appliances, is continually seeking ways to improve the design specifications, aesthetics and production techniques of its products. As a result alterations to our products and designs take place continually. Whilst every effort is made to produce information and literature that is up to date, this brochure should not be regarded as an infallible guide to the current specifications, nor does it constitute an offer for the sale of any particular product. Product dimensions indicated in our literature is indicative only. Actual product only should be used to define dimension cutouts. Distributors, and retailers are not agents of ILVE Appliances and are not authorized to bind ILVE Appliances by any express or implied undertaking or representation.

IL110918

## ILO60DCX

## 60cm built-in multifunction electric oven



NB: drawings are not to scale — they are to be used as a guide only

IL110918

EAN 9341584037565

**DISCLAIMER**  
Eurolinx Pty Ltd, trading as ILVE Appliances, is continually seeking ways to improve the design specifications, aesthetics and production techniques of its products. As a result alterations to our products and designs take place continually. Whilst every effort is made to produce information and literature that is up to date, this brochure should not be regarded as an infallible guide to the current specifications, nor does it constitute an offer for the sale of any particular product. Product dimensions indicated in our literature is indicative only. Actual product only should be used to define dimension cutouts. Distributors, and retailers are not agents of ILVE Appliances and are not authorized to bind ILVE Appliances by any express or implied undertaking or representation.

### FOLLOW US ON:



facebook.com/ILVEappliances



instagram.com/ILVE\_appliances



youtube.com/ILVEappliances



BLOG livewithilve.com

**Australia National Telephone Number 1300 MYILVE (694 583) New Zealand Telephone Number 64 3 344 5913**

**ILVE showroom hours:** Tuesday to Friday - 9am-5pm, Saturday - 10am-4pm, Sunday and Monday - closed

**\* Melbourne showroom hours:** Tuesday to Saturday - 10am-4pm

ilve.com.au

**NSW & ACT (Head Office)**  
48-50 Moore Street  
Leichhardt  
F 02 8569 4699

**VIC & SA**  
1211 Toorak Road  
Camberwell  
F 03 9809 2155

**QLD**  
1/42 Cavendish Road  
Coorparoo  
F 07 3397 0850

**WA & NT**  
Unit 10/55 Howe Street  
Osborne Park  
F 08 9201 9188

**TAS**  
3 Pear Avenue  
Derwent Park  
P 03 6272 7386

**New Zealand**  
PO Box 11.160  
Sockburn Christchurch  
F 03 344 5906