



MUSICflow HS6 SMART Hi-Fi AUDIO Wireless Multi-room Sound Bar

Model : LAS650M (HS6)

ENGLISH | SIMPLE MANUAL (1 of 2)

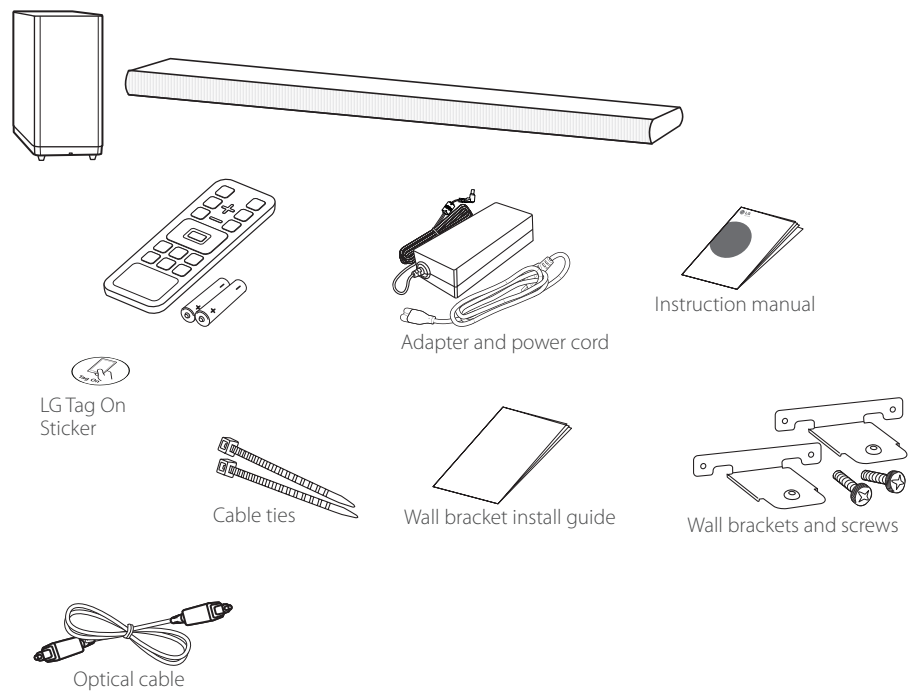
To view the instructions of advanced features, visit <http://www.lg.com> and then download Owner's Manual. Some of the content in this manual may differ from your unit.



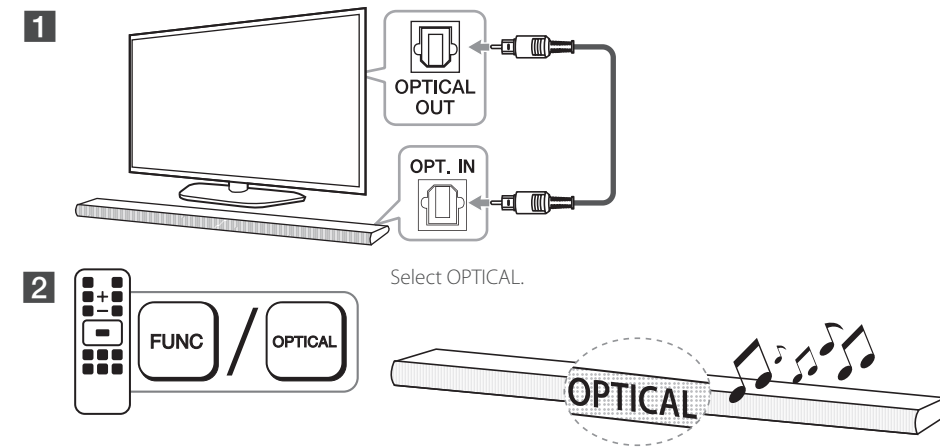
3471 6004 6716

www.lg.com

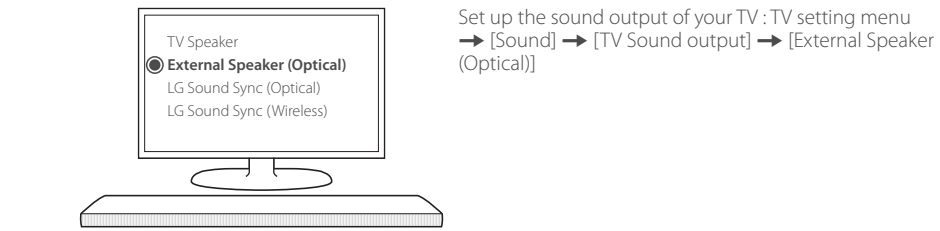
Unpacking



Optical operation



Some TV need to change setting of sound output. Refer to the description below.

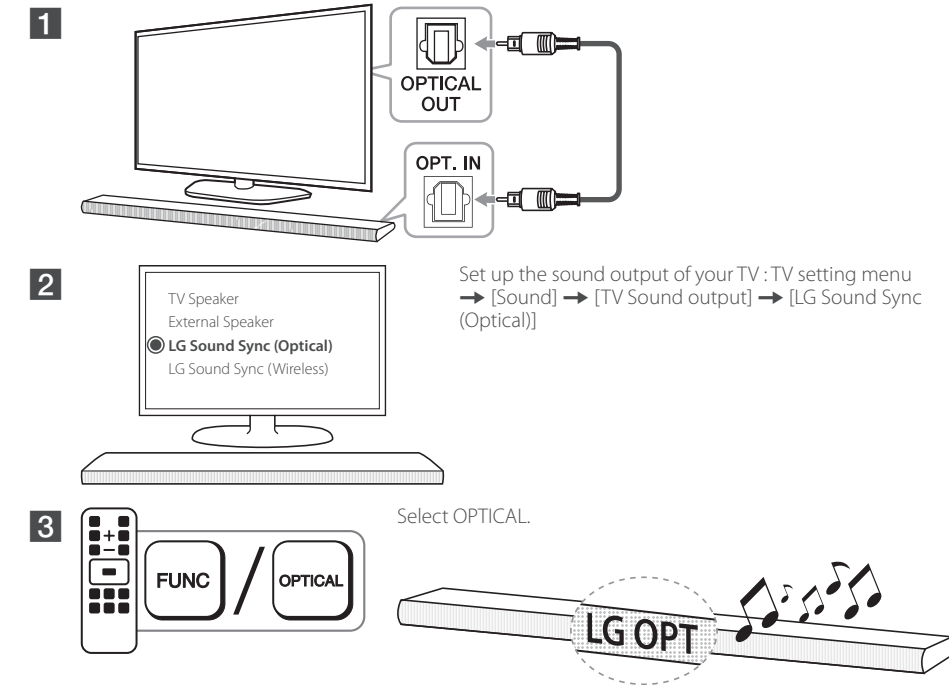


Details of TV setting menu vary depending on the manufacturers or models of your TV.

LG Sound Sync

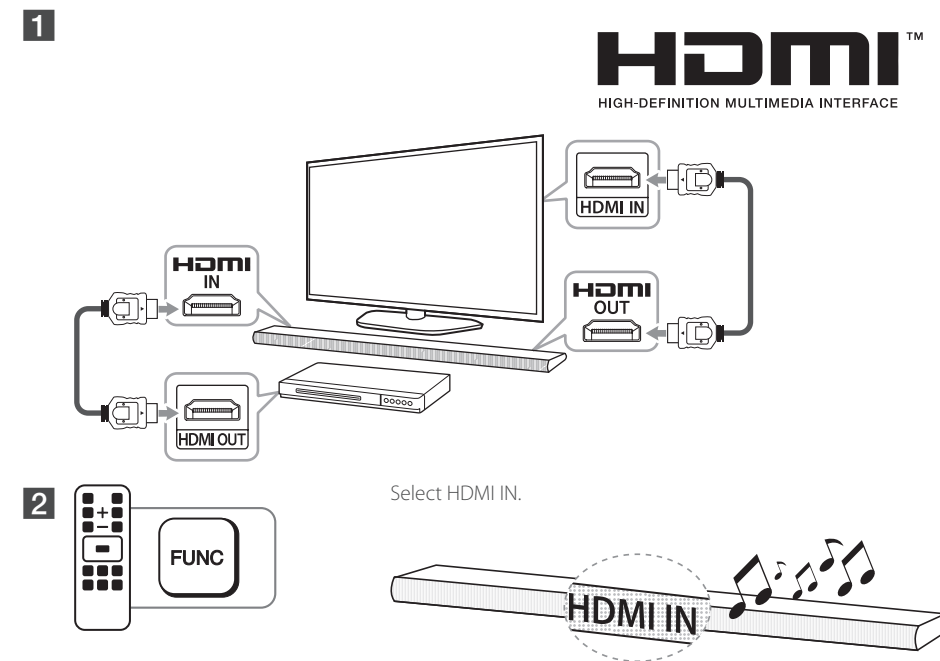
LG Sound Sync enables you to control some functions of this unit by a remote control of your LG TV. Controllable functions are volume up/down and mute. Make sure that your TV has LG Sound Sync logo as shown above.

Optical



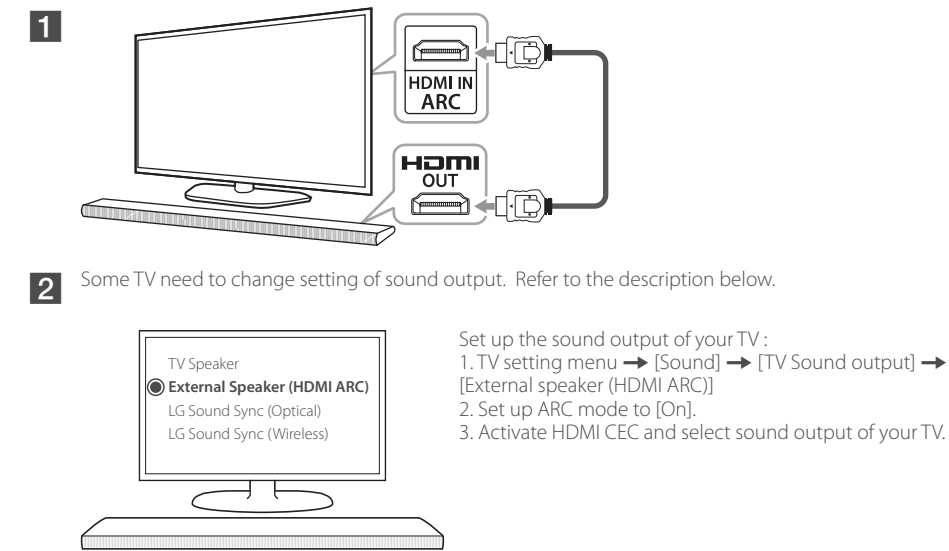
- For specific information of operating, refer to the instruction manual of your TV.
- When the connections failed, make sure of the conditions of this unit and your TV : power, function and cable connection.
- The amount of time to turn off this unit is different depending on your TV when you set AUTO POWER function to ON.

HDMI operation

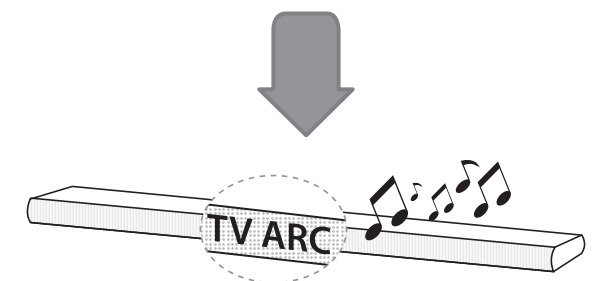


HDMI ARC (Audio Return Channel) operation

The ARC function enables an HDMI capable TV to send the audio stream to HDMI OUT of the unit.



ARC function is automatically selected when you turn on your TV no matter what kind of the function you are using.



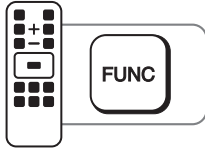
SIMPLINK



SIMPLINK enables you to control some functions of this unit by a remote control of your TV. Controllable functions are power on/off and volume up/down, etc. Make sure that your TV has SIMPLINK logo as shown above.


Using Bluetooth

1




Select Bluetooth function.

2



3



Play music on your Bluetooth device.

BT READY

BT

BT PAIRED

!

Enter the PIN code (0000) as needed.

!

Sound quality may become lower or disconnected depending on the distance, interference or obstacles.

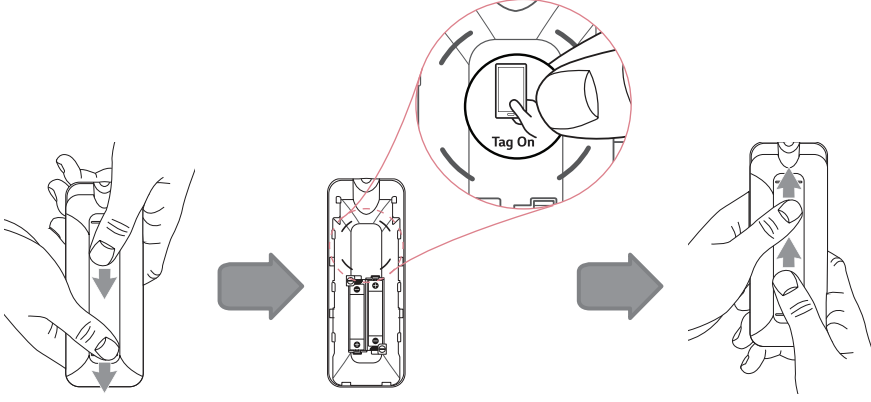
!

Depending on the type of the device, you may not be able to use the Bluetooth function. /

NFC for Easy Pairing (Android Only)

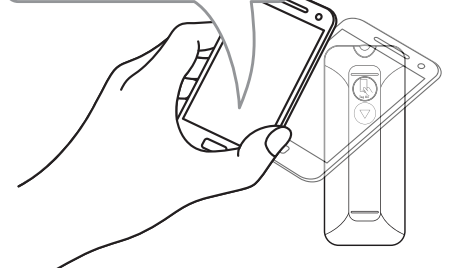
This unit can be paired simply and easily with an NFC-enabled device.

1



Attach the supplied LG Tag On sticker on the remote control.

2



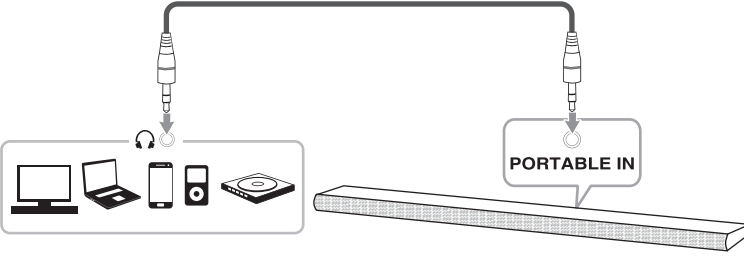
NFC → ON

!

When you are enjoying the music with Music Flow Player app, seamless playback is activated instead of Bluetooth pairing.

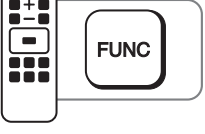
Using External device

1




Portable cable (Not included)

2



Select PORTABLE.

3



Play the music on the connected external device.

PORTABLE IN

PORTABLE

PORTABLE

Auto power On/Off

This unit automatically turns on and off by an input source : Optical.

Turns on or off AUTO POWER function.

AUTO POWER

ON

ON
↑
OFF

!

Depending on the connected device, this function may not operate.


!

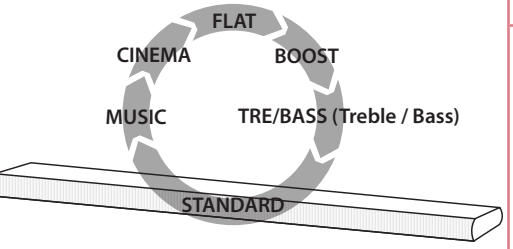
If you turned off the unit directly, it cannot be turned on automatically by AUTO POWER function. However the unit can be turned on by AUTO POWER function when optical signal comes in after 5 seconds of no signal.

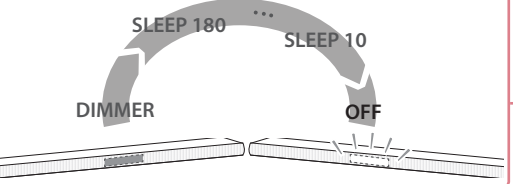
!

After the unit is turned on by AUTO POWER function, it will be automatically turned off if there is no signal for a certain period of time from the external device.

Remote Control

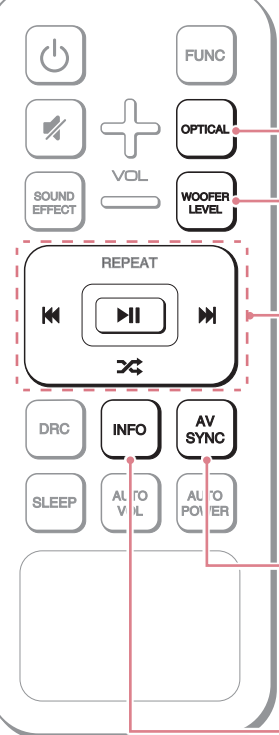


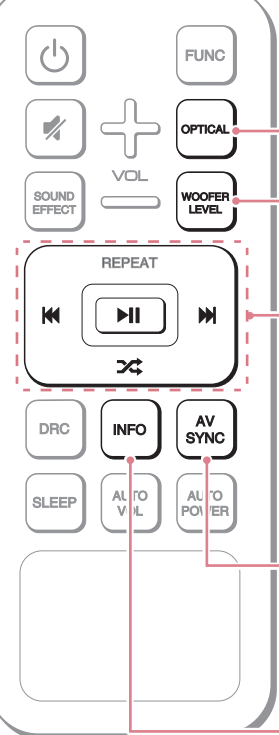




Make the sound clear when the volume is too low. (Dolby Digital only)

Adjusts the volume level appropriately.





OPTICAL function is selected directly. If you press this button again, the function is returned to previous one.

Adjust the sound level of woofer. (- 40 dB to 6 dB)

Controls playback on Wi-Fi mode.

Synchronizes the audio and video. (0 to 300 ms)

Press once.

PCM2/X,X

Using your TV remote control

You can control some functions of this unit by your TV remote control even in other company's product. Controllable functions are volume up/down and mute.

Press and hold to turn on or off this function.

INFO

ON

ON - TV REMOTE
↑
OFF - TV REMOTE

!

Supported TV brands

LG	Panasonic	Philips	Samsung	Sharp	Sony	Toshiba	Vizio
----	-----------	---------	---------	-------	------	---------	-------

!

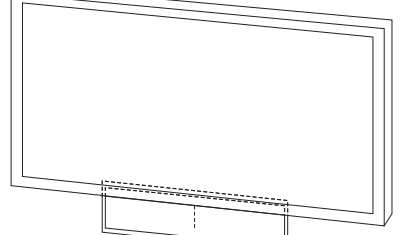
Make sure that the sound output of your TV is set to [External speaker].

!

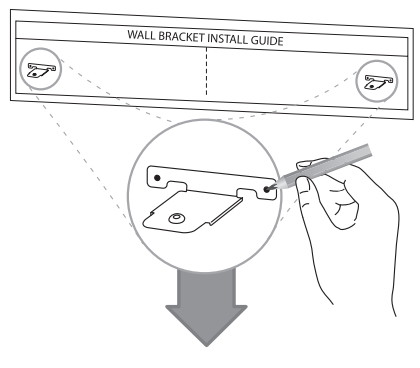
Depending on the remote control, this function may not work well.

Installation


1



2

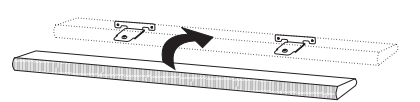


3

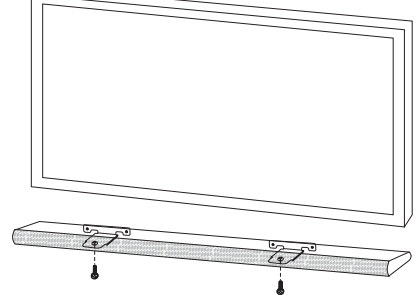


Screws and wall plugs are not supplied.

4



5



!

Because it is difficult to make a connection after installing this unit, you should connect the cables before installation.

!

Do not install this unit on Metallic furniture.



MUSICflow HS6
SMART Hi-Fi AUDIO
Wireless Multi-room Sound Bar

Model : LAS650M (HS6)

ENGLISH | SIMPLE MANUAL (2 of 2)

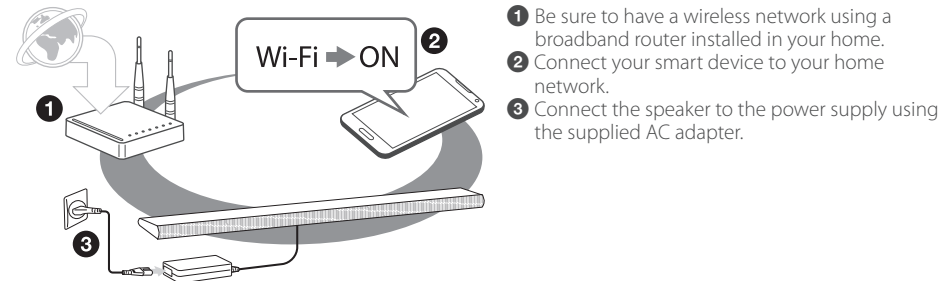
To view the instructions of advanced features, visit
<http://www.lg.com> and then download Owner's Manual.
Some of the content in this manual may differ from
your unit.



3471 69046735

www.lg.com

Step 1 Before using "Music Flow Player" App



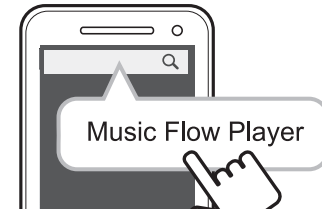
! The wireless router should be connected to the internet.

! Wireless signal interference may lead to disruption of network stability and playback.

! Depending on the speed of your network, playback of music services may not work well. /

Step 2 Installing "Music Flow Player" App

Download "Music Flow Player" on the iTunes store or Google Play Store.



A Type "Music Flow Player" in the search bar and tap "Search".



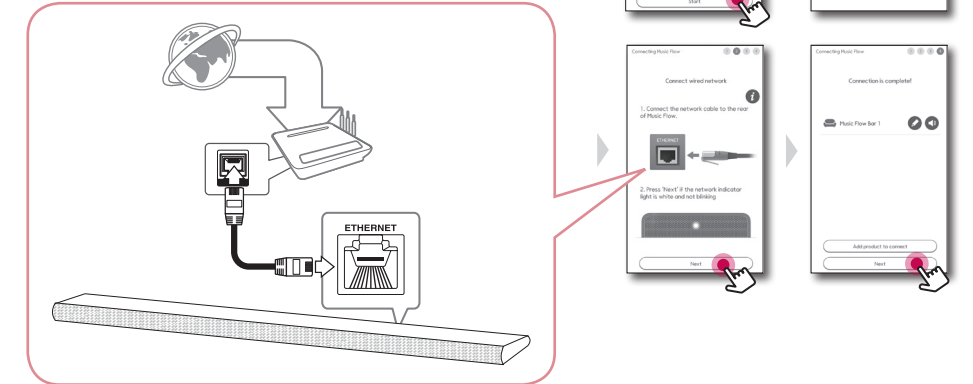
B Scan the QR code using a scanning application.

! Depending on the device, "Music Flow Player" app may not work.

! Music Flow Player app will be available with versions of the software as follow;
Android O/S : Ver 2.3.3 (or later) iOS O/S : Ver 5.1.1 (or later)

Step 3 Network Connection (Option 1 : Wired)

Using Music Flow Player app, select [Wired connection] and follow the on-screen instructions.

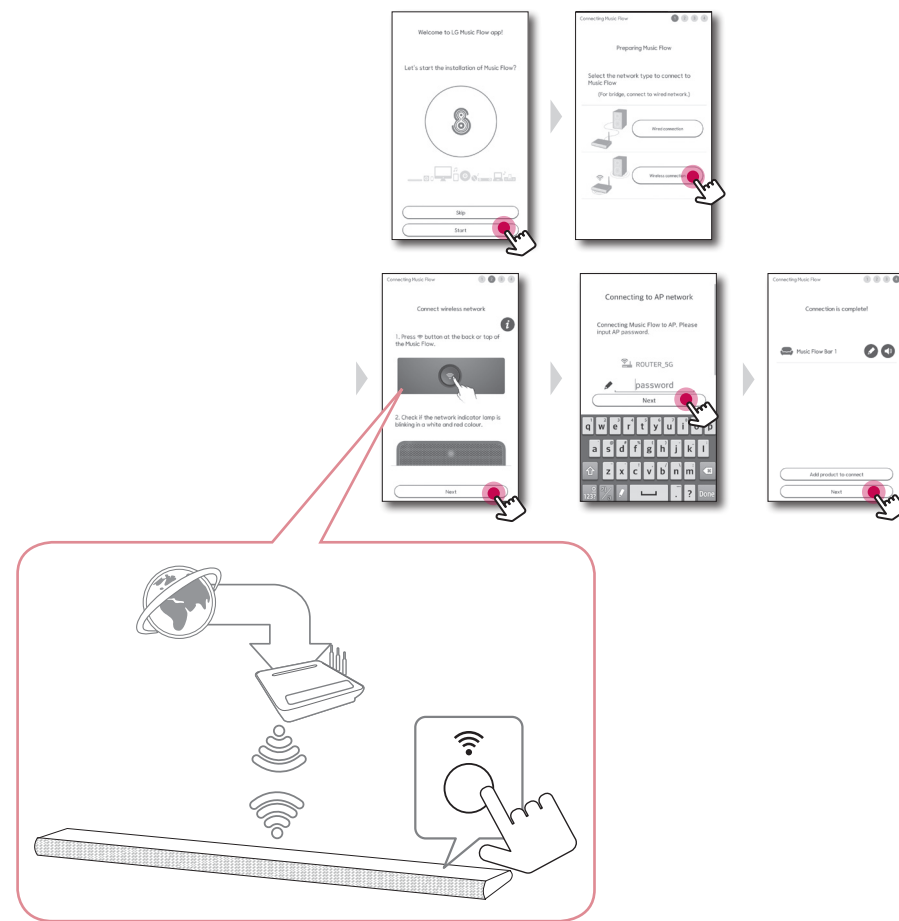


! If you restart the router, you will also need to reset the power of the speaker.

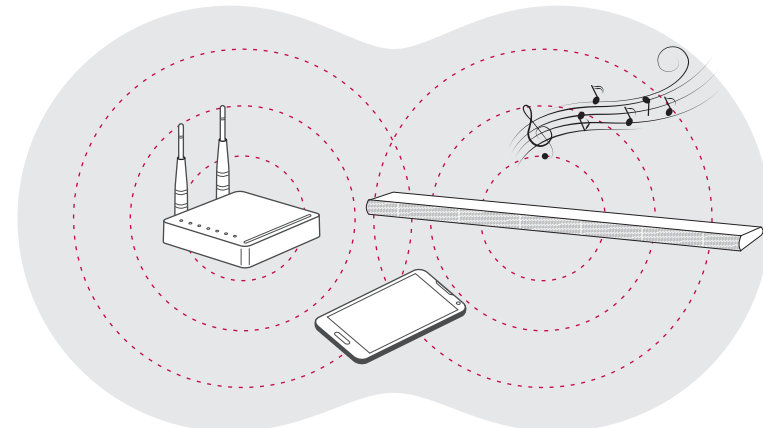
! If you install a new router, you will need to setup the network connection for the speaker.

Step 3 Network Connection (Option 2 : Wireless)

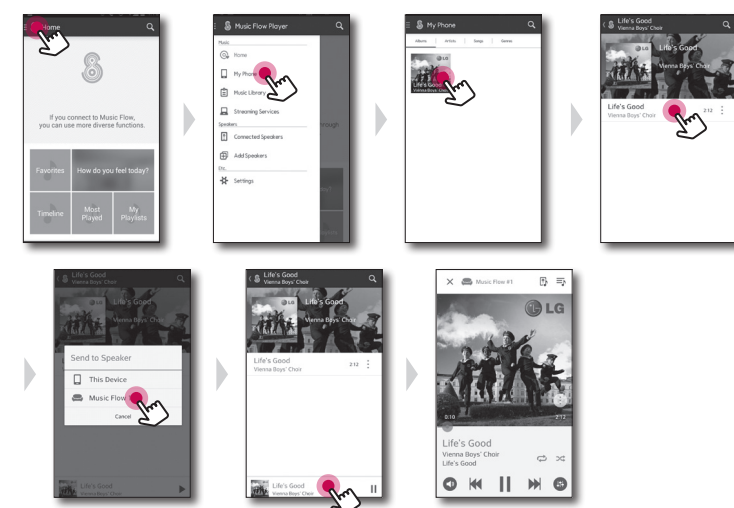
Using Music Flow Player app, select [Wireless connection] and follow the on-screen instructions.



Step 4 Music Playback



Playing a song on this device



NOTE



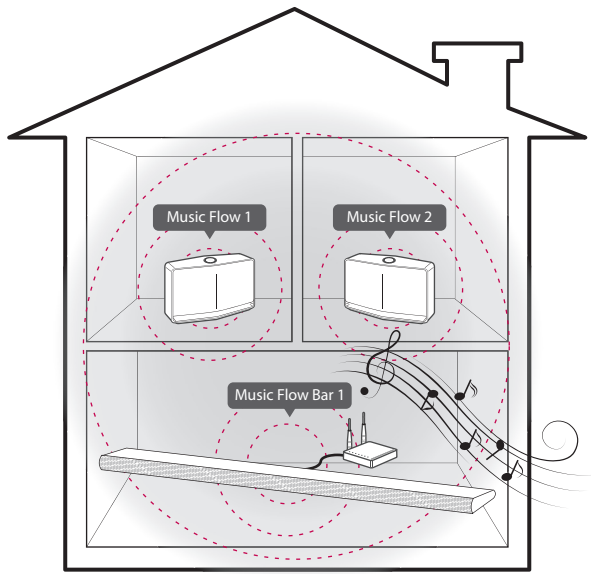
Multiple sound playback

There are a number of differing ways of listening to sound : Grouping and Surround playbacks. To use this playbacks, you should have several LG SMART HI-FI AUDIO.

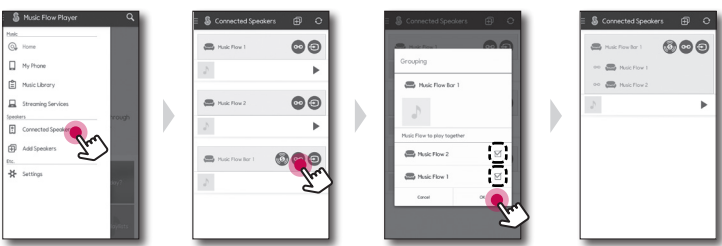
Before using the playbacks, you should add another LG SMART HI-FI AUDIO.



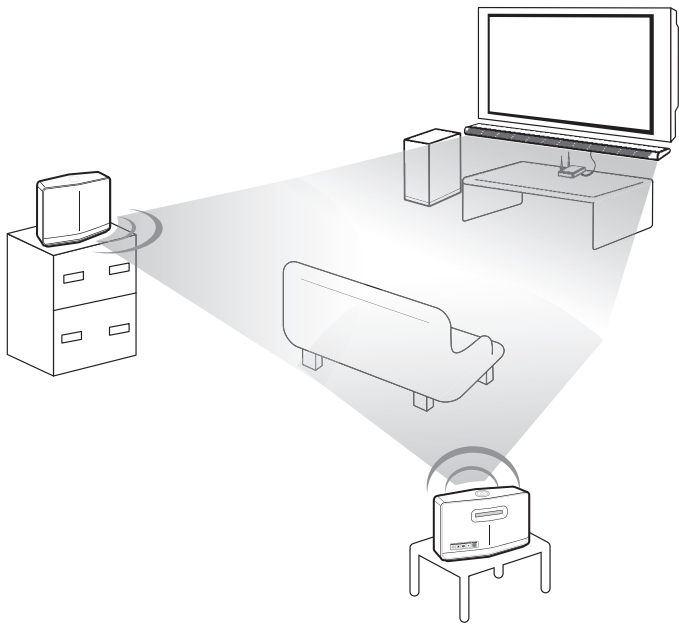
Grouping



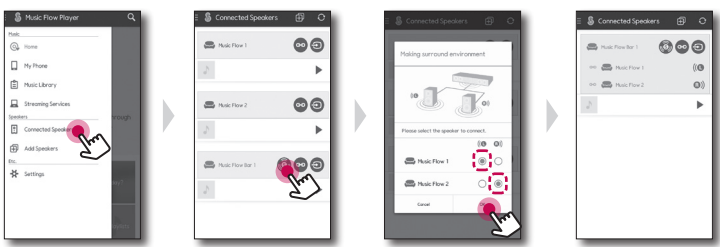
Any number of speakers can be grouped together to play the same music in synchrony. On Music Flow Player app, select [Connected Speakers] and follow the directions on screen.



Additional Sound




You can enjoy additional sound by adding another two speakers. (Rear right and left channels through Additional Music flow speakers) On Music Flow Player app, select [Connected Speakers] and follow the directions on screen.

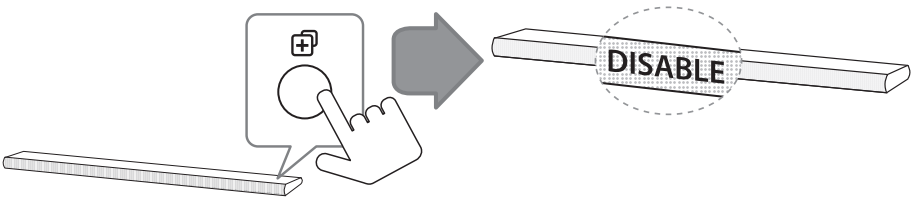


- ! When you enjoy the group playback, at least one speaker should be connected by LAN cable.
- ! If the speakers are connected only wirelessly, disconnect all the wireless connections and reconnect them after connecting one wired.
- ! If the speakers are not grouped, you can enjoy different music on each speaker.
- ! For smooth playback, it is recommended to select the speaker connected by LAN cable as a master speaker.
- ! The weak signal because of the long distance between speakers or wireless router and signal interference may cause abnormal playback.


Reset this Sound Bar System

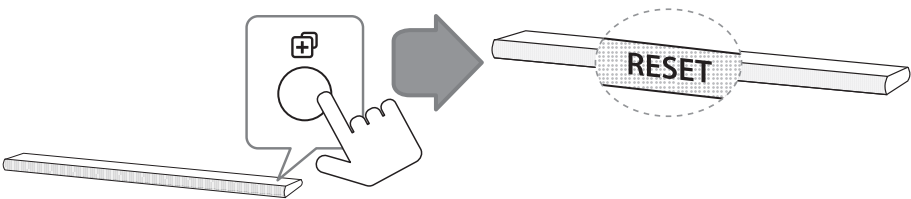
Initializing the network settings

Press and hold the  button until you hear the beep sound once. Then all wireless network ports are deactivated and delete the stored wireless network information.




Factory Set

Press and hold the  button until you hear the beep sound twice.



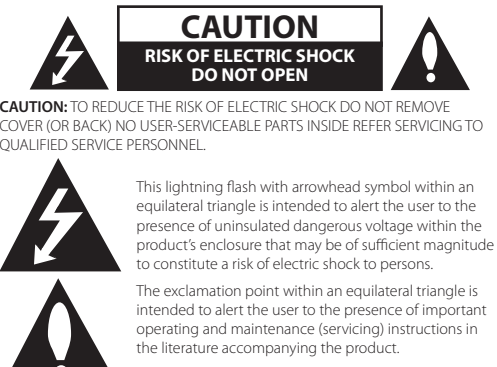
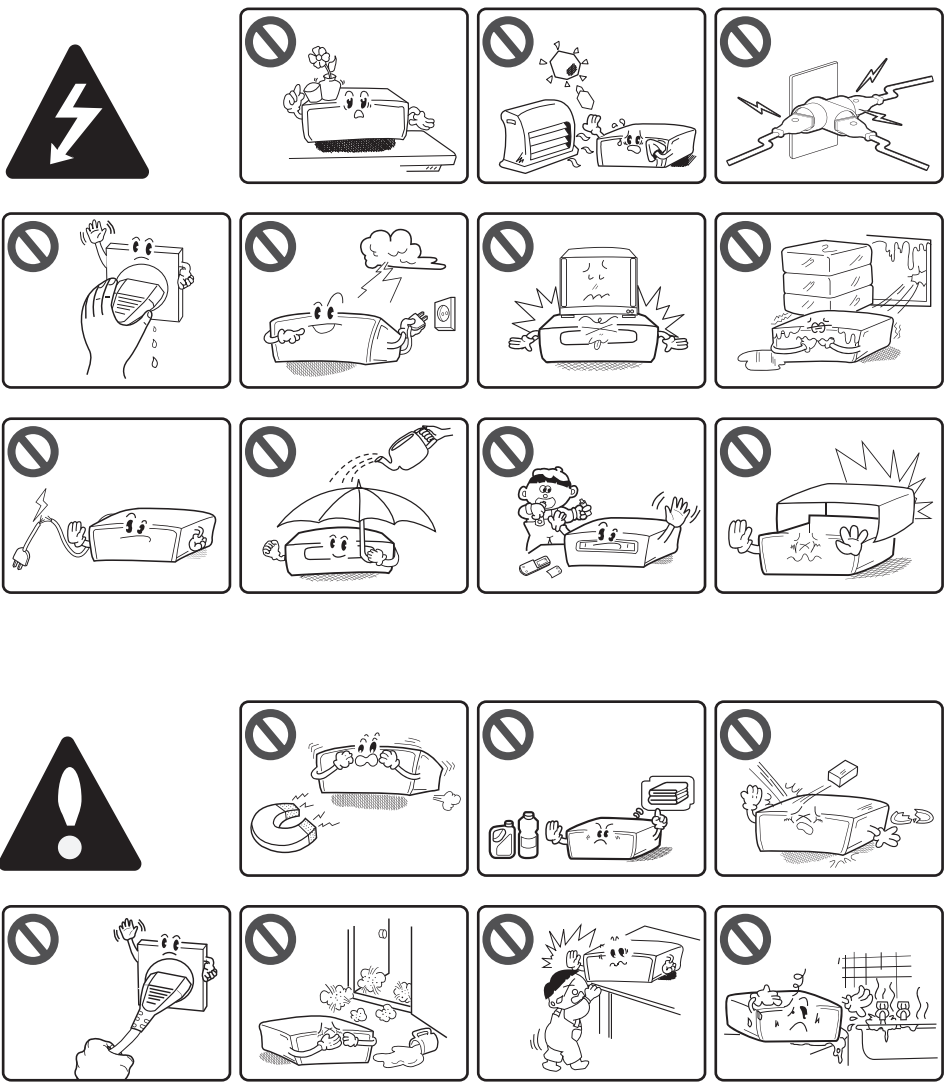
Specification

ENGLISH

AC adapter requirements	Input : 100 ~ 240 V ~ 50 / 60 Hz	
	Output : 25 V  2 A	
Power consumption	30 W	
	Networked standby : 5.7 W (If all network ports are activated)	
Amplifier Total output	320 W	
Bluetooth	Version	4.0
	Codec	SBC
Dimensions (W x H x D)	(1020 x 42 x 82) mm (with Foot)	
Net Weight (Approx.)	2 kg	

Design and specifications are subject to change without notice.

Safety Information



CAUTION: TO REDUCE THE RISK OF ELECTRIC SHOCK DO NOT REMOVE COVER (OR BACK) NO USER-SERVICEABLE PARTS INSIDE REFER SERVICING TO QUALIFIED SERVICE PERSONNEL.

This lightning flash with arrowhead symbol within an equilateral triangle is intended to alert the user to the presence of uninsulated dangerous voltage within the product's enclosure that may be of sufficient magnitude to constitute a risk of electric shock to persons.

The exclamation point within an equilateral triangle is intended to alert the user to the presence of important operating and maintenance (servicing) instructions in the literature accompanying the product.

WARNING: TO PREVENT FIRE OR ELECTRIC SHOCK HAZARD, DO NOT EXPOSE THIS PRODUCT TO RAIN OR MOISTURE.

CAUTION: The apparatus shall not be exposed to water (dripping or splashing) and no objects filled with liquids, such as vases, shall be placed on the apparatus.

WARNING: Do not install this equipment in a confined space such as a book case or similar unit.

CAUTION: Do not block any ventilation openings. Install in accordance with the manufacturer's instructions.

Slots and openings in the cabinet are provided for ventilation and to ensure reliable operation of the product and to protect it from over heating. The openings shall be never be blocked by placing the product on a bed, sofa, rug or other similar surface. This product shall not be placed in a built-in installation such as a bookcase or rack unless proper ventilation is provided or the manufacturer's instruction has been adhered to.

CAUTION concerning the Power Cord

The Power Plug is the disconnecting device.

In case of an emergency, the Power Plug must remain readily accessible.

This device is equipped with a portable battery or accumulator.

Safety way to remove the battery or the battery from the equipment:

Remove the old battery or battery pack, follow the steps in reverse order than the assembly. To prevent contamination of the environment and bring on possible threat to human and animal health, the old battery or the battery put it in the appropriate container at designated collection points. Do not dispose of batteries or battery together with other waste. It is recommended that you use local free reimbursement systems batteries and accumulators. The battery shall not be exposed to excessive heat such as sunshine, fire or the like.

CAUTION: Only use the AC adapter supplied with this device. Do not use a power supply from another device or another manufacturer. Using any other power cable or power supply may cause damage to the device and void your warranty.

NOTICE: For safety marking information including product identification and supply ratings, please refer to the main label on the bottom or rear of the apparatus.

- The appliance is not intended for use by young children or infirm persons without supervision.
- Young Children should be supervised to ensure that they do not play with appliance.
- If the appliance is supplied from a cord extension set or an electrical portable outlet device, the cord extension set on electrical portable outlet device must be positioned so that it is not subject to splashing or ingress of moisture.

RF Radiation Exposure Statement

This equipment should be installed and operated with minimum distance 20 cm between the radiator and your body.