

**Series 8, integrated rangehood, 86 cm, Stainless steel  
DHL895DAU**



**Optional accessories**

DHZ5605 : Standard recirculation kit

**The integrated rangehood: offers a sleek and seamless design in the kitchen with fully integrated installation.**

- **Silent:** maximum extractor performance with little noise
- **EcoSilence Drive™:** the powerful, energy-saving drive for hoods.
- **LED lighting:** for perfect, energy-efficient illumination of the cooktop.
- **Intensive speed setting:** removes strong kitchen odours especially quickly and effectively.
- With exhaust, the air is cleaned by a grease filter and then ducted to the outside which ensures optimal kitchen air quality.

**Technical Data**

Typology : Built-in/Built-under  
 Approval certificates : Australia Standards, CE, VDE  
 Length electrical supply cord : 150 cm  
 Required niche size for installation (HxWxD) : 418mm x 836.0mm x 264mm mm  
 Minimum distance above an electric cooktop : 500 mm  
 Minimum distance above a gas cooktop : 650 mm  
 Net weight : 9.7 kg  
 Type of control : Electronic  
 Number of power settings : 3-stages + intensive setting  
 Maximum output air extraction : 610 m<sup>3</sup>/h  
 Boost position output recirculating : 727 m<sup>3</sup>/h  
 Maximum output recirculating air : 563 m<sup>3</sup>/h  
 Boost position air extraction : 800 m<sup>3</sup>/h  
 Number of lights : 2  
 Noise level : 64 dB(A) re 1 pW  
 Diameter of air outlet : 120 / 150 mm  
 Grease filter material : Washable aluminium  
 EAN code : 4242005141241  
 Connection Rating : 172 W  
 Fuse protection : 3 A  
 Voltage : 220-240 V  
 Frequency : 50 Hz  
 Plug type : AU plug  
 Installation type : Built-in



4 242005 141241

**Series 8, integrated rangehood, 86 cm,  
Stainless steel  
DHL895DAU**

**The integrated rangehood: offers a sleek and seamless design in the kitchen with fully integrated installation.**

---

**Design & Innovation**

- Canopy Stainless steel
- Appliance colour: Stainless steel
- Accessory required for recirculation mode: Standard recirculation kit

**Power and Mode of Operation**

- 3 power settings plus intensive setting
- Extraction rate according to EN 61591 Ø 15 cm:  
max. Normal use 610 m<sup>3</sup>/h  
Intensive 800 m<sup>3</sup>/h
- Ducted and recirculated-air operation
- Electronic controls via Push button controls with Electronic display
- EcoSilence BLDC brushless motor
- Rim ventilation
- Noise min./max. Normal Level: 41/64 dB
- Power rating: 172 W

**Comfort & Convenience**

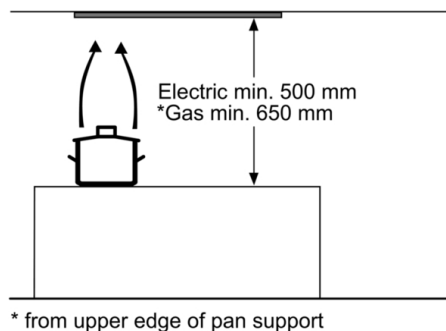
- Dishwasher safe metal grease filters
- Intensive operation automatic revert - 6min
- Automatic run on for Automatic run on time - 30 min
- 2 x 1 Watt LED lights
- Saturation display for filters

**2 year warranty**

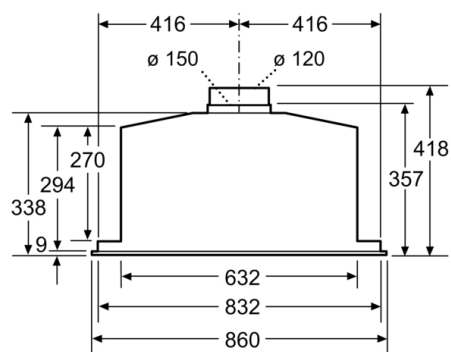
**Technical Information**

- Dimensions exhaust air (HxWxD): 418-418 x 860 x 282 mm
- Dimensions recirculating (HxWxD): 418-418 x 860 x 282 mm
- Diameter pipe Ø 150 mm (Ø 120 mm enclosed)
- Electrical cable length 1.5 m

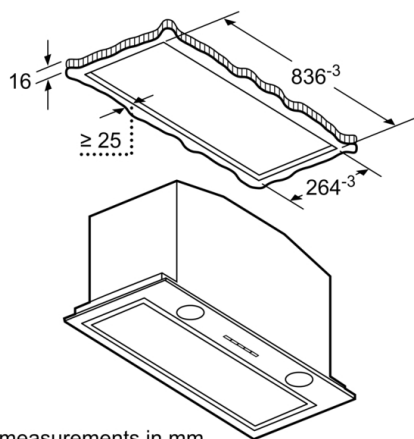
**Series 8, integrated rangehood, 86 cm,  
Stainless steel  
DHL895DAU**



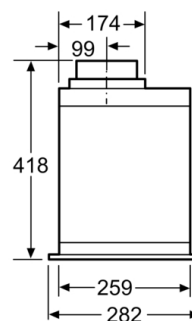
measurements in mm



measurements in mm



measurements in mm



measurements in mm