

GOLDAIR™

Oil Column Heater

OPERATING INSTRUCTIONS



Model: GOC215, GOC217, GOC20111

General Care And Safety Guide

Thank you for choosing a Goldair product. This Goldair appliance has been designed and manufactured to high standards of engineering and with proper use and care, as described in this booklet, will give you years of useful service.

Please read these instructions carefully and retain them for future use.

1. Use only the voltage specified on the rating label of the appliance.
2. Keep all objects at least 1 metre from the front, sides and rear of the appliance.
3. This appliance is intended for household use only and not for commercial or industrial use.
4. Indoor use only.
5. Use this appliance only as described in this manual. Any other use is not recommended by the manufacturer and may cause fire, electric shock or injury.
6. The common cause of overheating is deposits of dust or fluff in the appliance. Ensure these deposits are removed regularly by unplugging the appliance and vacuum cleaning the air vents and grills.
7. Always unplug appliance when not in use.
8. When the appliance has been unpacked, check it for transport damage and ensure all parts have been delivered. If parts are missing or the appliance has been damaged, contact the Goldair Customer Services Team.
9. If your appliance does not work, or is not working properly, contact the place of purchase or the Goldair Customer Services Team.
10. Do not connect the appliance to mains supply until completely assembled and adjusted.
11. Ensure hands are dry before handling the plug or main unit.
12. Do not locate the appliance directly below any power socket outlet.
13. Ensure heater is on a flat, stable, heat-resistant surface.
14. Do not operate with cord set coiled up as a heat build up is likely, which could be sufficient to become a hazard.
15. Carry out regular checks of the supply cord to ensure no damage is evident.
16. Do not operate this appliance with a damaged cord, plug or after the appliance malfunctions or has been dropped or damaged in any manner. Return to a qualified electrical person for examination, electrical service or repair.
17. Do not twist, kink or wrap the cord around the appliance, as this may cause the insulation to weaken and split. Always ensure that all cord has been removed from any cord storage area and is unrolled before use.
18. It is recommended that this heater is plugged directly into the wall socket. Power boards are not rated to supply power to high wattage appliances.
19. A correctly specified, undamaged extension cord may be used with this heater provided it is used in a safe manner.
20. Do not remove plug from power socket until the appliance has been switched off.
21. Do not remove plug from power socket by pulling cord; always grip plug.
22. Do not place cord under carpet or cover with rugs or furniture. Arrange the cord so it cannot be tripped over.
23. Don't place appliance on bedding or on thick & long carpet where the openings may get blocked.
24. Switch off and use handle provided when moving
25. Do not place appliance close to radiant heat source.
26. Never use the appliance to dry clothes.
27. Do not insert or allow foreign objects to enter any ventilation or exhaust opening, as this may cause an electric shock, fire or damage to the appliance.
28. Do not sit on the appliance.
29. Do not use abrasive cleaning products on this appliance. Clean with a damp cloth (not wet) rinsed in hot soapy water only. Always remove plug from the mains supply before cleaning.
30. Do not operate in areas where petrol, paint or other flammable liquids are used or stored.
31. This appliance is not intended for use by persons (including children) with reduced physical, sensory or mental capabilities or lack of experience and knowledge, unless they are supervised or have been given instruction concerning the use of the appliance by a person responsible for their safety.
32. Children should be supervised to ensure that they do not play with the appliance.
33. Do not use this appliance in the immediate surrounds of a bath, a shower, or a swimming pool or other liquids. The appliance must not be immersed in any liquids.
34. There are no user serviceable parts installed in the unit.
35. Do not place the unit in wardrobes or other enclosed spaces as this may cause fire hazards.
36. This unit is not supposed to be used in or around locations where foodstuffs, works of art or delicate articles of science, etc are stored.
37. **WARNING** you must not cover this heater. Covering this heater presents fire risk and will activate the safety fuse; permanently disabling the unit.

**YOUR SAFETY IS IMPORTANT TO US. PLEASE ENSURE YOU TAKE NOTE OF
THE INSTRUCTIONS AND WARNINGS OUTLINED IN THIS MANUAL.**

Components Of Your Oil Column Heater

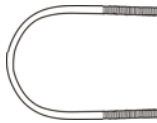
- A. Carry Handle
- B. Heat Control Buttons
- C. Adjustable Thermostat
- D. Cord Storage
- E. Wheel Assembly
- F. Radiant Fins



Assembly



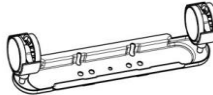
Main Body x1



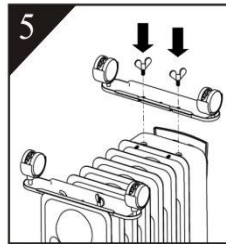
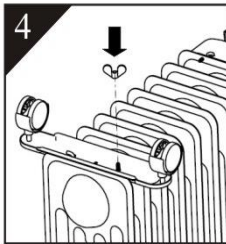
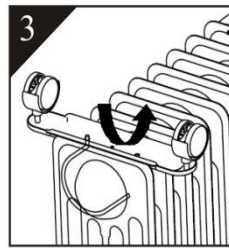
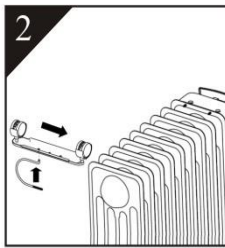
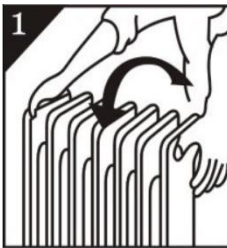
U-shape Bolt x 2



Wing Nut x 4



Wheel Castor x2



Carefully turn the heater upside-down on a non-scratching and stable surface to prevent damage to the paint finish or your floor surfacing (Figure 1).

Attach the second wheel castor at the bottom of the control panel, then securely fasten the wheel castor onto the heater with the two screws (Figure 5).

Fit the wheel castors onto the heater by placing the U-shaped bolt between the outermost fin away from the control side of the heater (Figure 2, 3).

IMPORTANT: Please fit the wheel assemblies as per the diagram. Any other position may affect the stability of the heater.

Securely fasten the wheel castors to the heater by screwing the wing nuts onto the U-bolts (Figure 4).

WARNING: Operate the heater in normal upright position only, with wheel assemblies attached to the bottom, any other position could create a hazardous situation.

Operating Your Oil Column Heater

Always choose a safe location for the heater, keeping in mind the safety precautions outlined. Ensure all packaging has been removed from the unit before use. This appliance requires no installation, it should be used solely as a portable appliance.

WARNING Keep all objects at least 1 metre from the front, sides and rear of the appliance.

WARNING: In order to avoid overheating, do not cover the heater.

WARNING: Never leave this heater unattended.

WARNING: Do not use this heater with a programmer, separate timer, remote-control system or any other device that switches the heater on automatically.

HEAT CONTROL BUTTONS

The heating element heating options are:

- | Low heat
- || Medium heat
- | + || High heat

Check that the heat control switch is set to Off position before plugging the heater into the power supply. For greater economy, use the high heat setting initially and then switch to the lower heat settings.

THERMOSTAT

Turn the thermostat knob clockwise until you reach the maximum temperature on the graduated scale. When the desired room temperature is reached, slowly turn the knob anti-clockwise until the heater turns off (you will hear a click). The heater will now cycle on and off to maintain the set temperature.



Care and Cleaning

SAFETY DEVICES

This appliance has three protection devices

1. Tilt switch - this will automatically turn the appliance off if the appliance is not in the appropriate operating position.
2. Resettable thermal link - this will automatically disconnect the power to the appliance at a pre-set overheat temperature. After cooling down it will reset and power on again. If this occurs, investigate what is causing the appliance to overheat.
3. Thermal fuse - this disconnects the appliance permanently in case of overheating. (It is non resettable).

CAUTION: The appliance generates heat during use. Proper precautions must be taken to prevent the risk of burns, scalds, fires or other damage to persons.

PROOF OF PURCHASE

To receive warranty retain receipt as proof of purchase.

CARE AND CLEANING

The appliance requires regular cleaning to ensure trouble free operation:

Unplug the appliance from the mains supply before cleaning.

Ensure that the appliance has been allowed to cool down completely before cleaning.

Use a damp cloth (not wet) to wipe the exterior of the appliance to remove dust and dirt.

Never use solutions such as benzene, thinners or polishing agents.

Use a vacuum cleaner to remove dust and fluff from around the grills and fins.

Ensure the appliance is dry before plugging back into the mains supply.

Do not attempt to dismantle the appliance. There are no user serviceable parts. For service or repair, contact an authorised electrical service technician.

This appliance is filled with a precise quantity of special oil. Repairs requiring opening of the oil container are only to be made by the manufacturer or his service agent who should be contacted if there is an oil leak. When scrapping the appliance, follow the regulations concerning disposal of oil.

TECHNICAL SPECIFICATION

Model No:	GOC215	GOC217	GOC2111
Supply:	220-240VAC 50Hz	220-240VAC 50Hz	220-240VAC 50Hz
Wattage:	1000W	1500W	2000-2400W

GOLDAIR

SUPPORT AND TECHNICAL ADVICE

Goldair – New Zealand
Monday – Friday 8am-5pm
Phone +64 (0)9 917 4000
Phone 0800 232 633
info@cdb.co.nz

Goldair – Australia
Monday – Friday 8am-5pm
Phone +61 (0)3 9365 5100
Phone 1300 465 324
info@cdbgoldair.com.au

Two Year Warranty

Thank you for purchasing this Goldair product. Your product is warranted against faults and manufacture when used in normal domestic use for a period of **two years**. In non-domestic use Goldair limits the voluntary warranty to **three months**.

Goldair undertake to repair or replace this product at no charge if found to be defective due to a manufacturing fault during the warranty period.

This warranty excludes damage caused by misuse, neglect, shipping accident, incorrect installation, or work carried out by anyone other than a qualified electrical service technician.

PLEASE KEEP YOUR RECEIPT AS THIS WILL HELP VERIFY YOUR WARRANTY.

The benefits given to you by this warranty are in addition to other rights and remedies available to you under law in relation to the goods or services to which this warranty relates.

In Australia, our goods come with guarantees that cannot be excluded under the Australian Consumer Law. You are entitled to a replacement or refund for a major failure and compensation for any other reasonably foreseeable loss or damage. You are also entitled to have the goods repaired or replaced if the goods fail to be of acceptable quality and the failure does not amount to a major failure.

In New Zealand this warranty is additional to the conditions and guarantees of the Consumers Guarantee Act (1993).

Goldair – New Zealand

CDB Goldair
PO Box 100-707
N.S.M.C
Auckland

Phone +64 (0)9 917 4000
Phone 0800 232 633
www.goldair.co.nz

Goldair – Australia

CDB Goldair Australia Pty
PO Box 574
South Morang
Victoria, 3752

Phone +61 (0)3 9365 5100
Phone 1300 GOLDAIR (1300 465 324)
www.goldair.com.au

Goldair Two Year Warranty (IMPORTANT: Please complete and retain this warranty card)

Name

Address

Place Of Purchase

Date Of Purchase

Name Of Product

Model Number

Attach a copy of the purchase receipt to this warranty card

GOLDAIR™

CDB  GOLDAIR

New Zealand
PO Box 100-707,
North Shore Mail Centre,
Auckland, 0745
www.goldair.co.nz

Australia
PO Box 574,
South Morang,
Victoria, 3752
www.goldair.com.au