

## Series 6, Integrated Design Hood, 90 cm, clear glass black printed DBB97AM60A



### Optional accessories

DWZ1IB6K1 : Chimney extension 450-854 mm

## Perfectly integrated design rangehood with extendable glass visor for superior extraction.

- **Seamless integration:** thanks to flush installation design hood is almost invisible in an upper cabinet.
- **Flexibility:** flexible kitchen planning, such as height, width, design and structure of the upper cabinet interior possible.
- **Glass panel with integrated TouchSelect control:** an automatic recognition of the glass panel position enables automatic operation of power level and light.
- **Expanded storage space:** the hood can hold up to 10 kg on each side. And even left and right beside the chimney shelves can be placed.
- **Silent:** maximum extractor performance with little noise

### Technical Data

Typology : Built-in/Built-under  
 Approval certificates : Australia Standards  
 Length electrical supply cord : 130 cm  
 Required niche size for installation (HxWxD) : 340mm x 860.0mm x 300mm mm  
 Height of product, without chimney : 60 mm  
 Minimum distance above an electric cooktop : 430 mm  
 Minimum distance above a gas cooktop : 650 mm  
 Net weight : 10.4 kg  
 Type of control : Electronic  
 Number of power settings : 3-stages + intensive setting  
 Maximum output air extraction : 460 m<sup>3</sup>/h  
 Boost position output recirculating : 652 m<sup>3</sup>/h  
 Maximum output recirculating air : 451 m<sup>3</sup>/h  
 Boost position air extraction : 749 m<sup>3</sup>/h  
 Number of lights : 3  
 Noise level : 63 dB(A) re 1 pW  
 Diameter of air outlet : 120 / 150 mm  
 Grease filter material : Washable stainless steel  
 EAN code : 4242005307456  
 Connection Rating : 259 W  
 Voltage : 220-240 V  
 Frequency : 50 Hz  
 Plug type : AU plug  
 Installation type : Built-in



## **Series 6, Integrated Design Hood, 90 cm, clear glass black printed DBB97AM60A**

**Perfectly integrated design rangehood  
with extendable glass visor for superior  
extraction.**

### **Design**

- Glass panel with touch control for an easy operation and enhanced vapor capture.
- Flush-fitted installation for a seamless integration in wall cupboards.
- Space efficient, compact design for extra storage possibilities on the hood and up to max. 10 kg storage weight per side.
- The fan and light are automatically turned on and off by opening and closing the glass panel.
- The light can also be independently turned on and off when the glass panel is closed by quick hand touch on control area.

### **Comfort**

- Electronic controls via TouchControl with Electronic display
- 3 power settings plus intensive setting
- Intensive setting with automatic switch back to previous setting
- Intensive operation automatic revert - 6min
- 3 x 2 W LED
- Colour Temperature: 3500 K
- Light Intensity: 517 lux
- Ducted and recirculated-air operation
- For recirculated extraction various recirculation kits are available as optional accessories.

### **Cleaning**

- Dishwasher safe metal grease filters
- Stainless steel filter covers
- Easy to clean smooth surfaces and materials.

### **Performance**

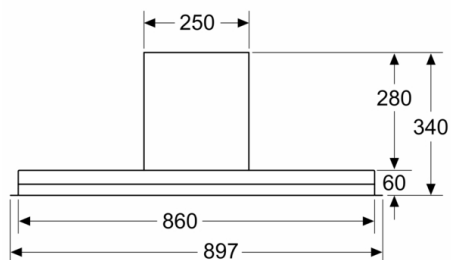
- Extraction rate according to EN 61591 Ø 15 cm:  
max. Normal use: 460 m<sup>3</sup>/h  
Intensive: 749 m<sup>3</sup>/h
- Noise level according to EN 60704-3 exhaust air:  
Max. normal use: 63 dB(A) re 1 pW  
Intensive: 73 dB(A) re 1 pW
- Noise min./max. Normal Level: 50/63 dB
- With the Clean Air Plus recirculation kit (available as accessory) your appliances reaches:  
Extraction rate in recirculation mode: Max. normal use: 451 m<sup>3</sup>/h  
Intensive: 652 m<sup>3</sup>/h  
Noise level in recirculation mode: Max. normal use: 67 dB(A) re 1 pW  
Intensive: 74 dB(A) re 1 pW

### **Planning and installation information**

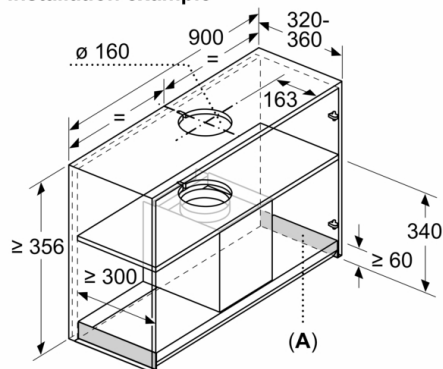
- Appliance dimensions (HxWxD): 340 x 897 x 298 mm
- Built-in dimensions (HxWxD): 340 x 860 x 300 mm
- Cupboard 90 cm
- Diameter pipe Ø 150 mm (Ø 120 mm enclosed)
- Please reference the built-in dimensions provided in the installation drawing
- Integrated Design Hood comfort installation: easy installation system
- Suitable for installation in bottomless wall cupboards.
- Enclosed spacers for installation in wall cupboards with maximum depth of up to 360 mm.
- Enclosed mats for protection against scratches and dirt of storage space on hood sides.
- For installation in higher wall cupboards chimney extensions are available as optional accessories.
- Chimney extensions are compatible with the available recirculation kits.
- Electrical cable length 1.3 m

## Series 6, Integrated Design Hood, 90 cm, clear glass black printed DBB97AM60A

measurements in mm  
**Front view**

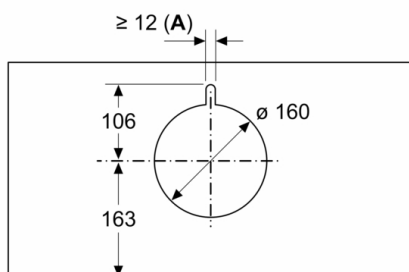


measurements in mm  
**Installation example**



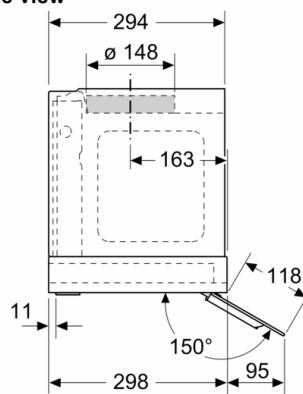
A: Area without hinges

measurements in mm

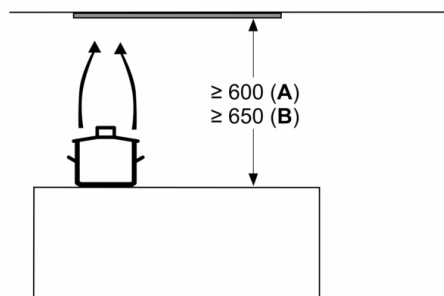


A: Cable bushing

measurements in mm  
**side view**



Measurements in mm



From upper edge of pan support

A: Electric  
B: Gas